

2015–25 CAASPP Trends for the San Marino Unified School District

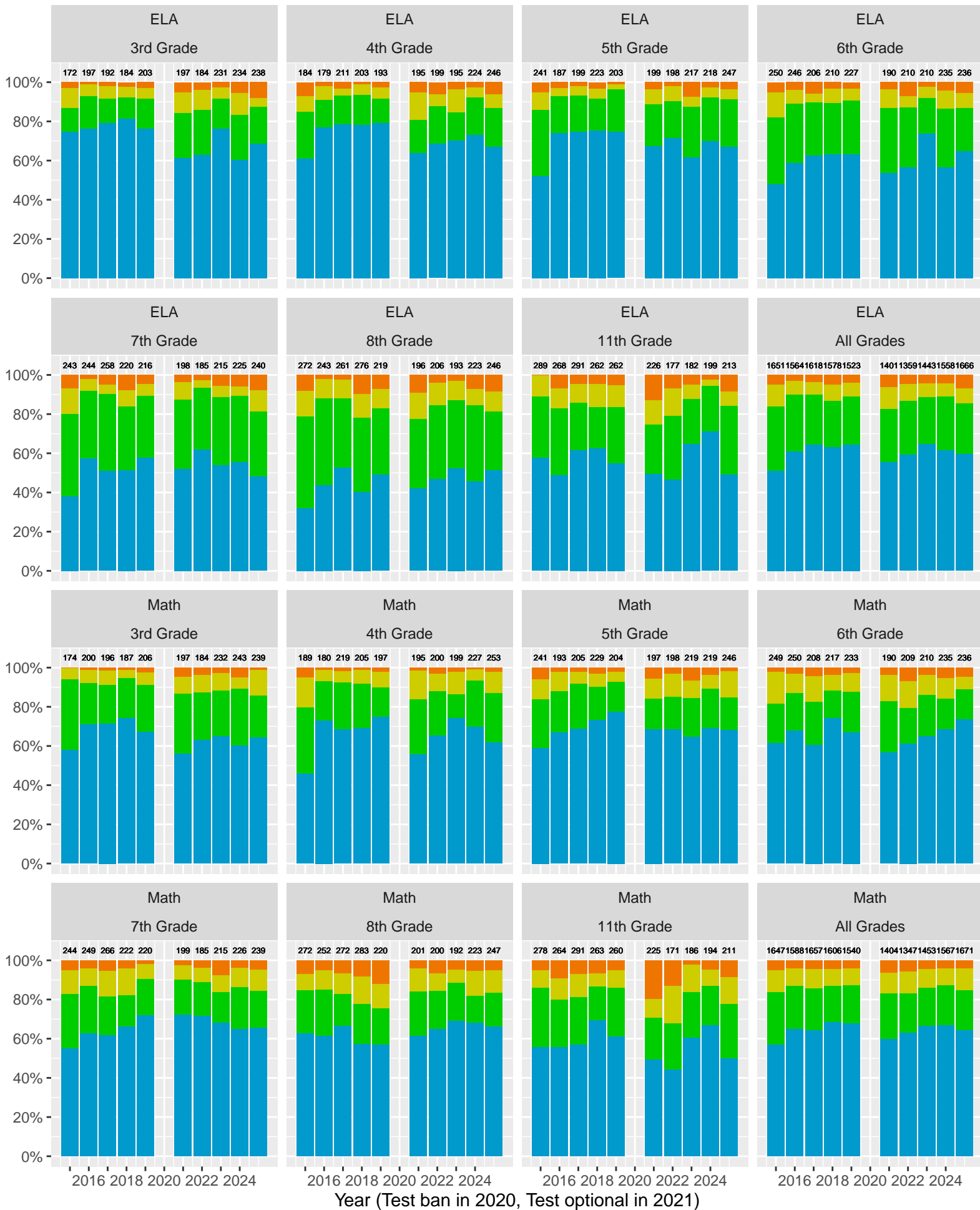
Feb 2026
Piedmont, California



TABLE OF CONTENTS

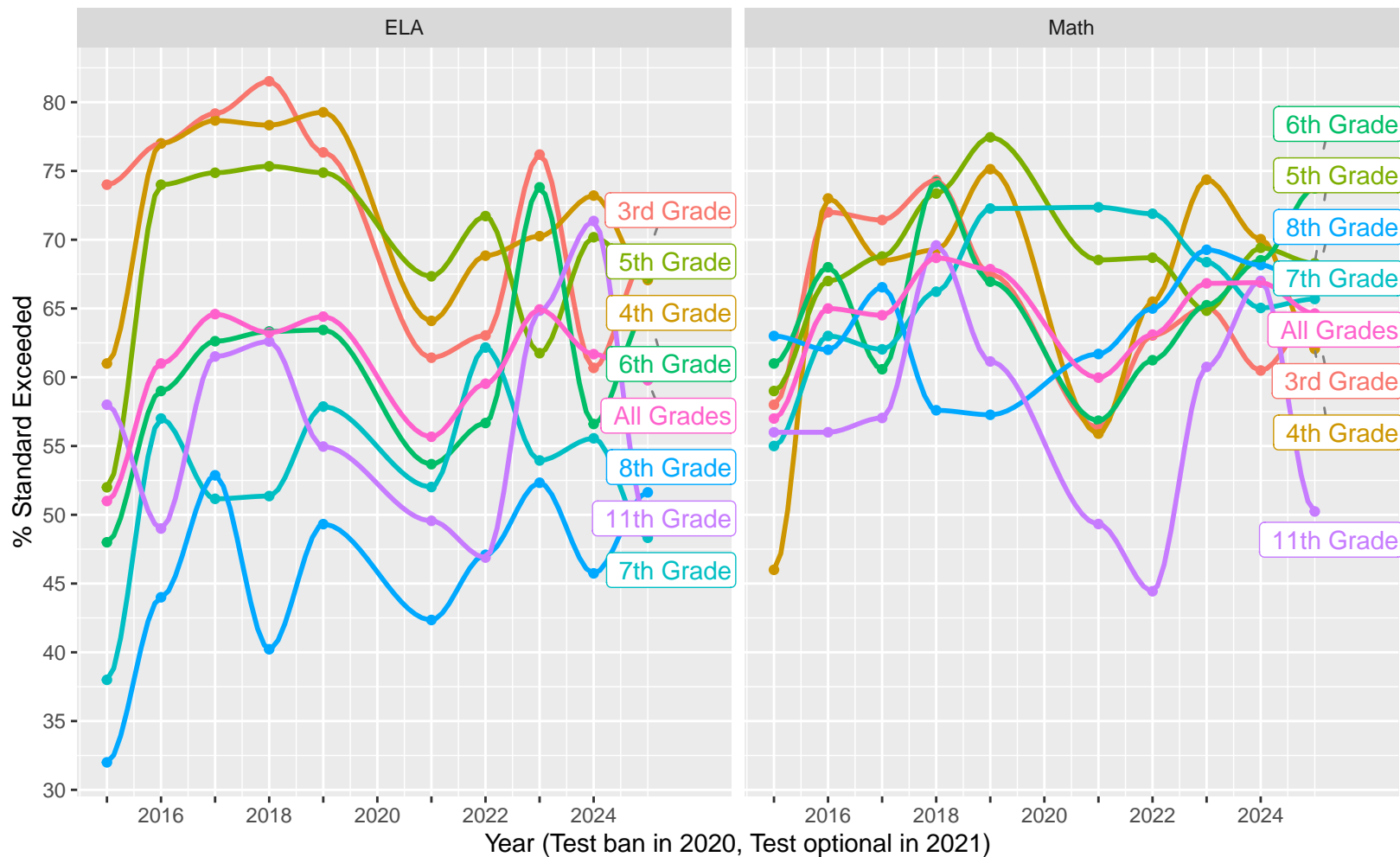
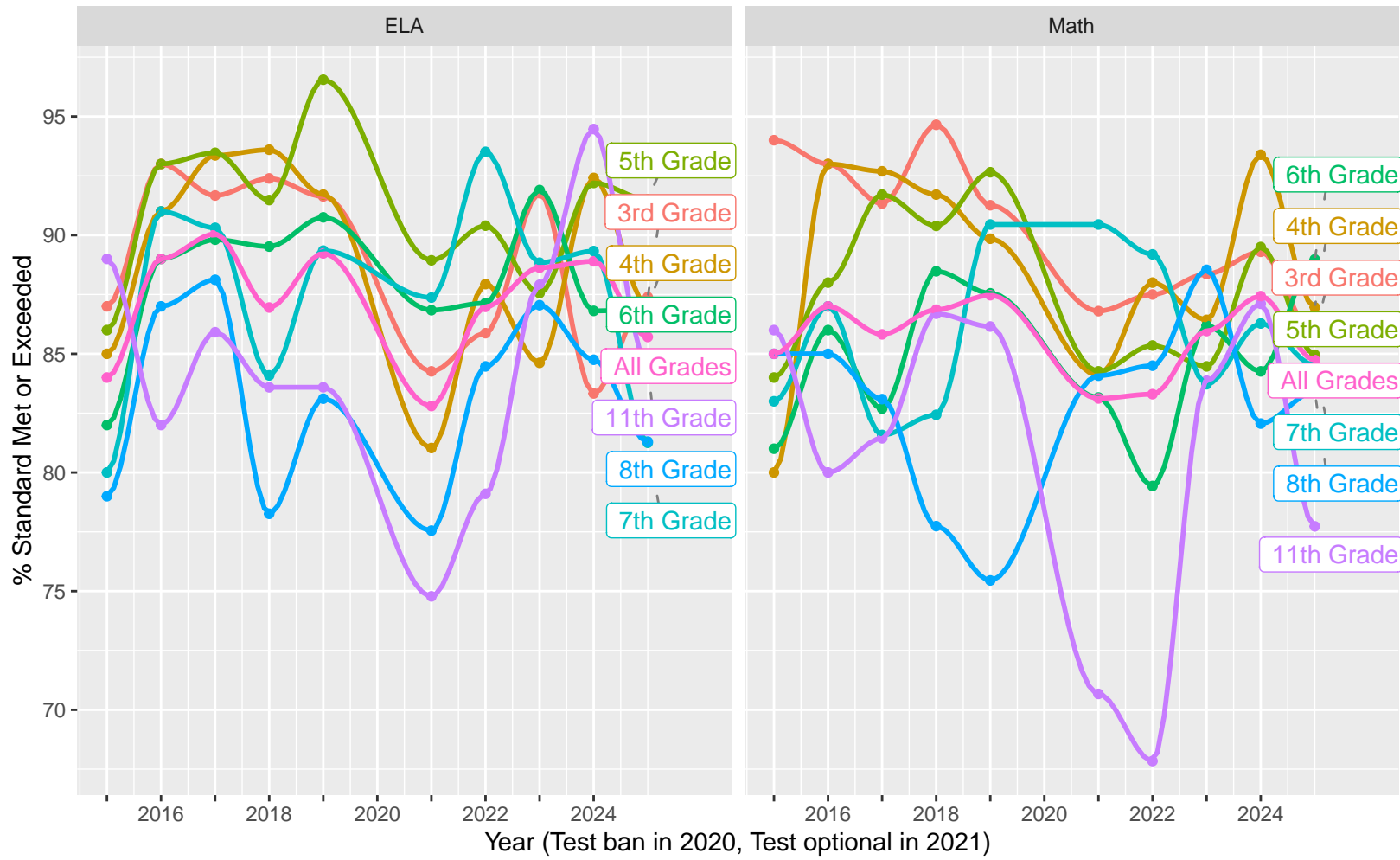
High Level ELA and Math, trending by Year and broken out by Grade.....	p 3
Year over Year (YoY) variation by Grade for Standard Met (and Exceeded).....	p 4
ELA and Math drilldown to Subject Areas 1–4, by Year, by Grade.....	p 5–8
Racial Distribution of Students in 2024.....	p 9
All Grade ELA and Math by Sex, (Non–)White, Disadvantage, Parent Ed.....	p 10–13
CAST Life Sciences, Physical Science, Earth and Space Science.....	p 14–16
CAST Life Sciences, Earth and Space by Sex.....	p 17
CAST Physical Science by (Non–)White, Parent Education.....	p 18–19

CAASPP Test Performance: San Marino Unified School District

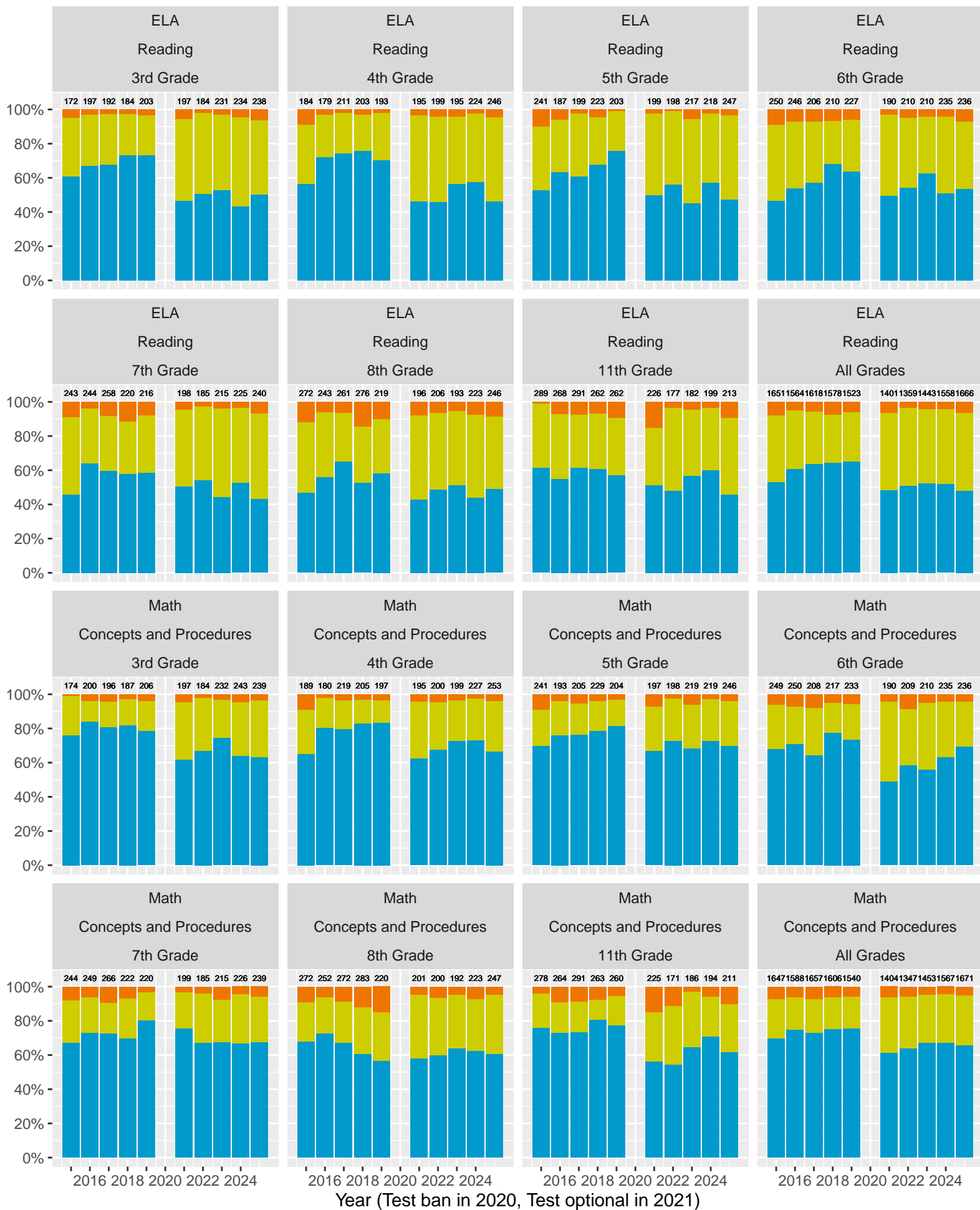


Key: ■ Standard Exceeded ■ Standard Met ■ Standard Nearly Met ■ Standard Not Met

Grades stacked (trends, variance, outliers)

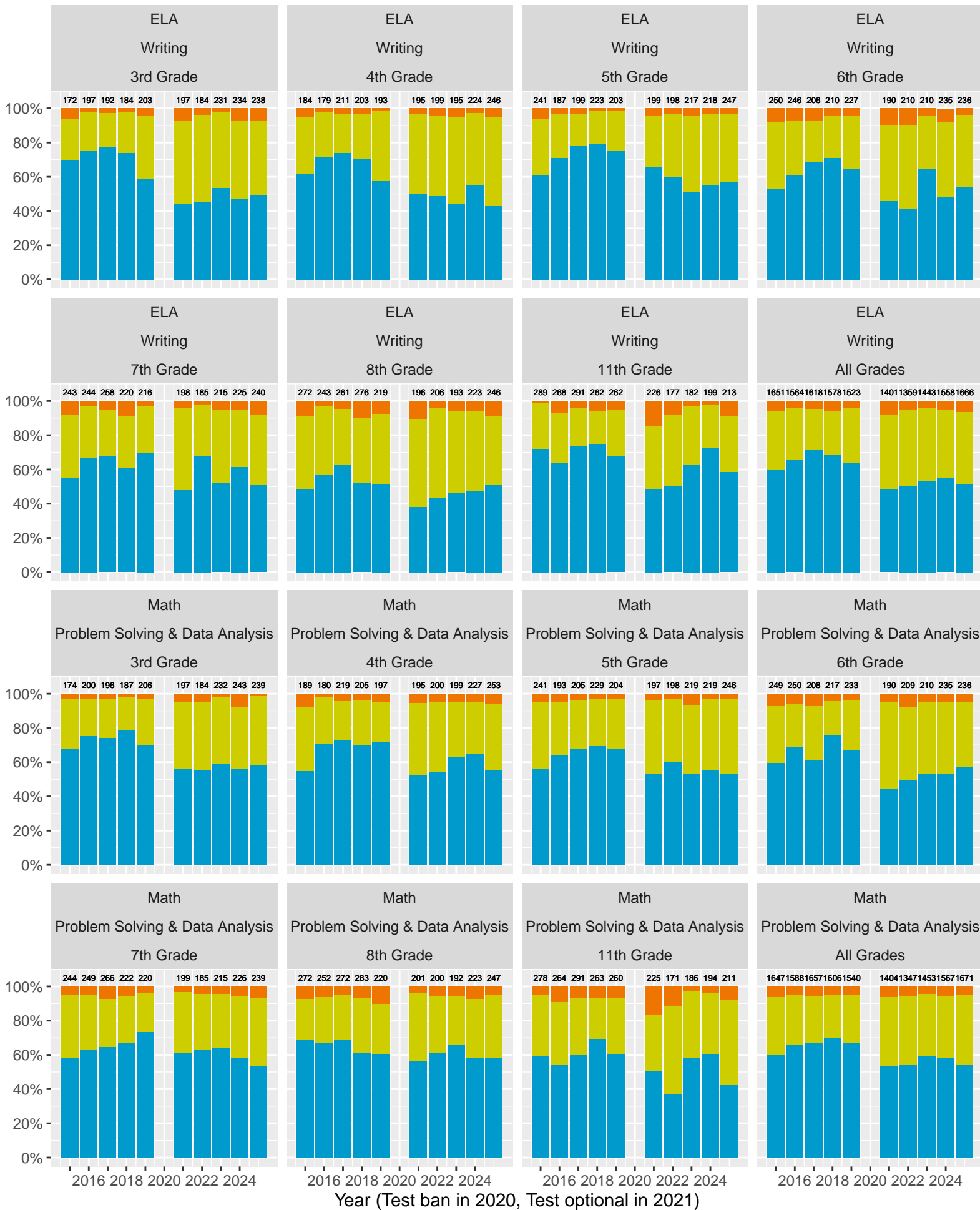


San Marino Unified School District (Subject Area 1)



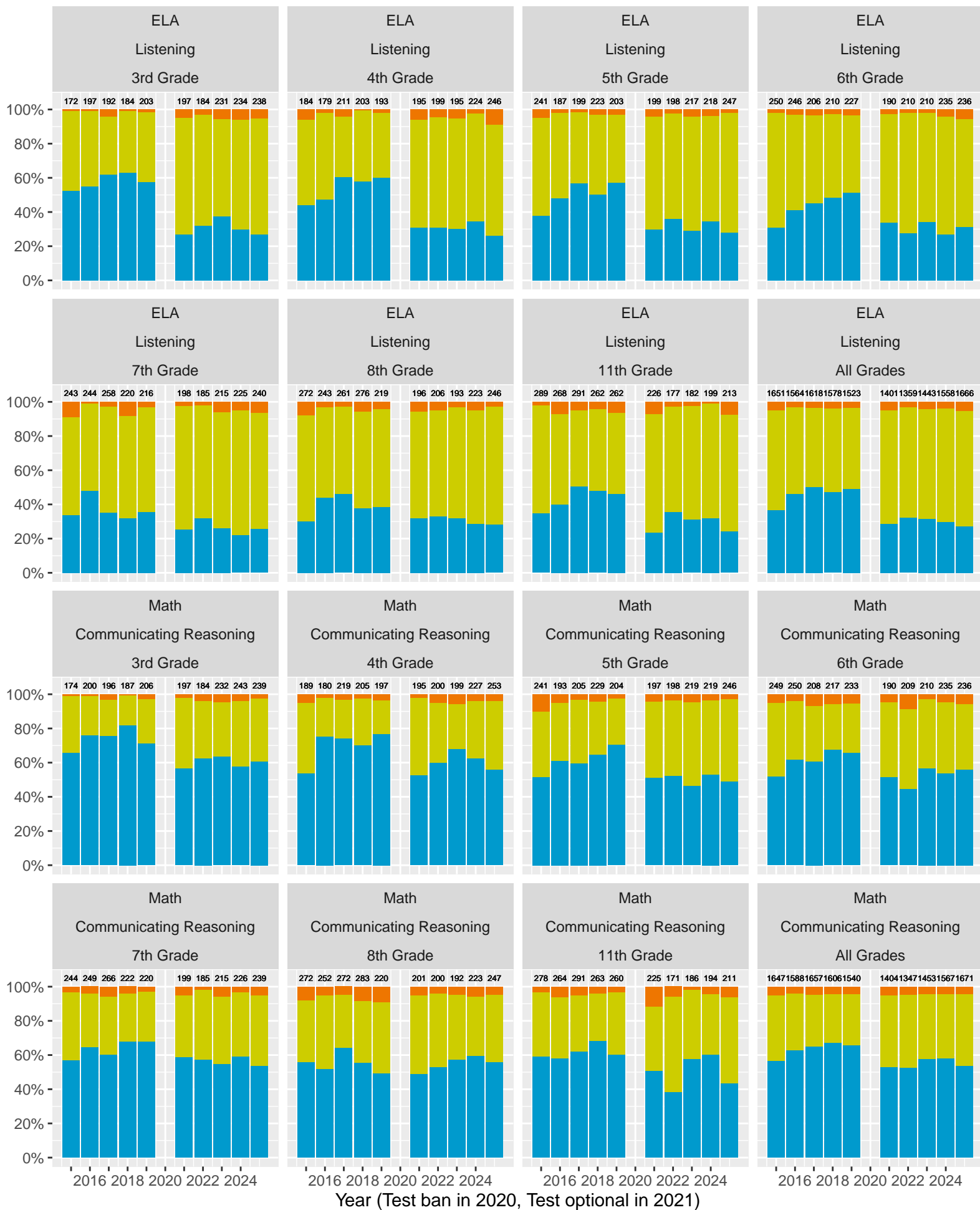
Key: ■ Above Standard ■ Near Standard ■ Below Standard

San Marino Unified School District (Subject Area 2)



Key: ■ Above Standard ■ Near Standard ■ Below Standard

San Marino Unified School District (Subject Area 3)



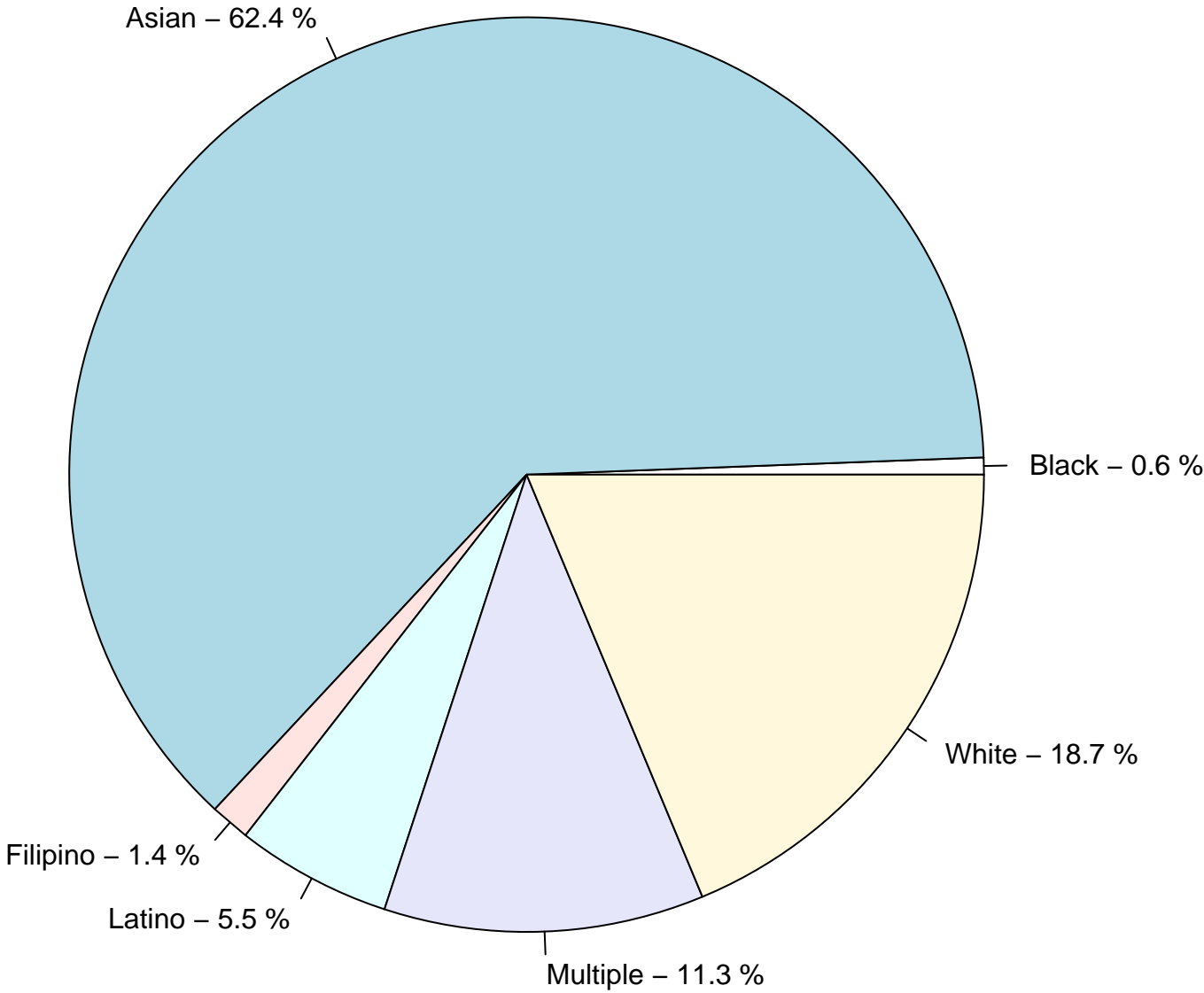
Key: ■ Above Standard ■ Near Standard ■ Below Standard

San Marino Unified School District (Subject Area 4)

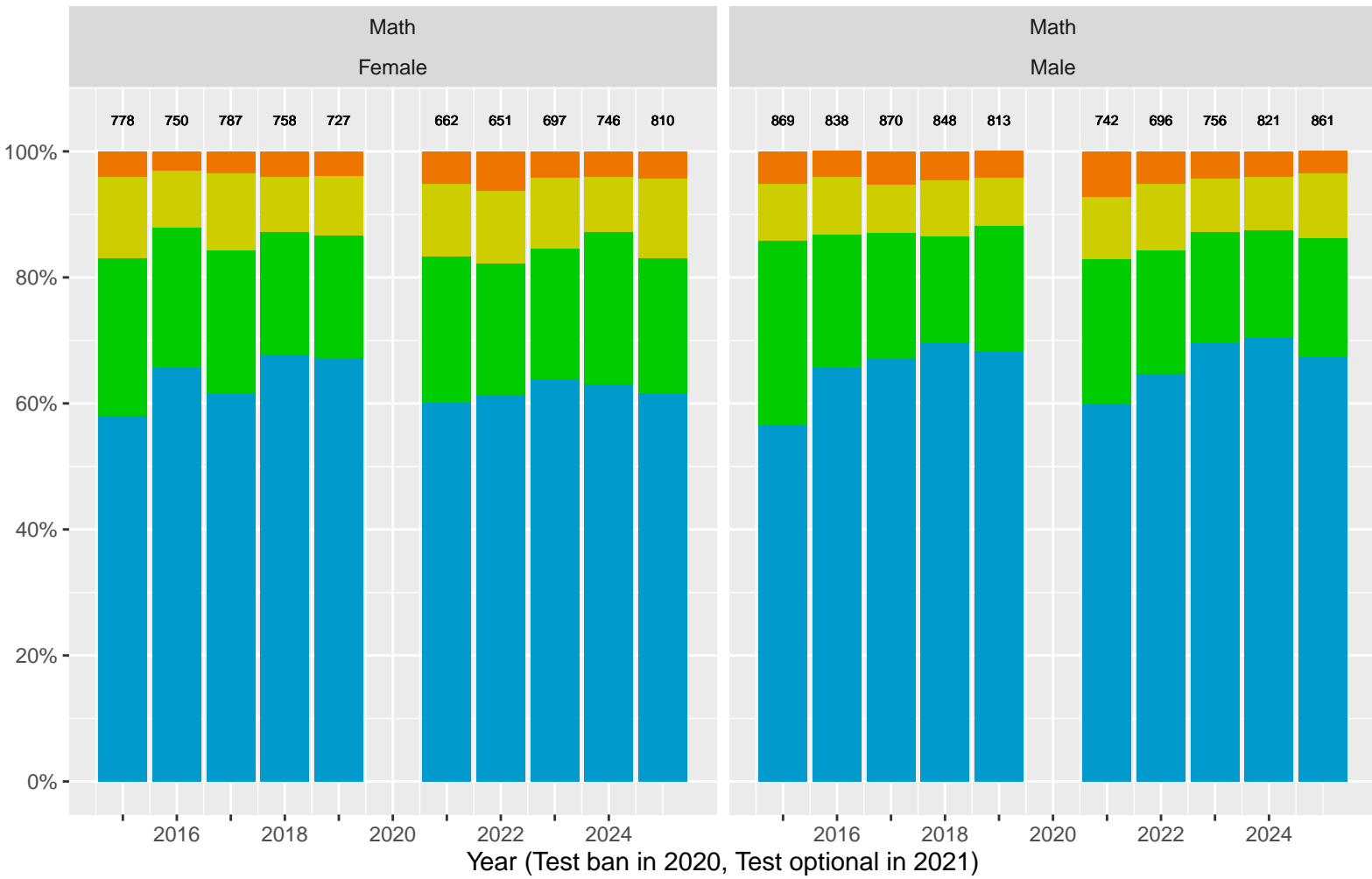
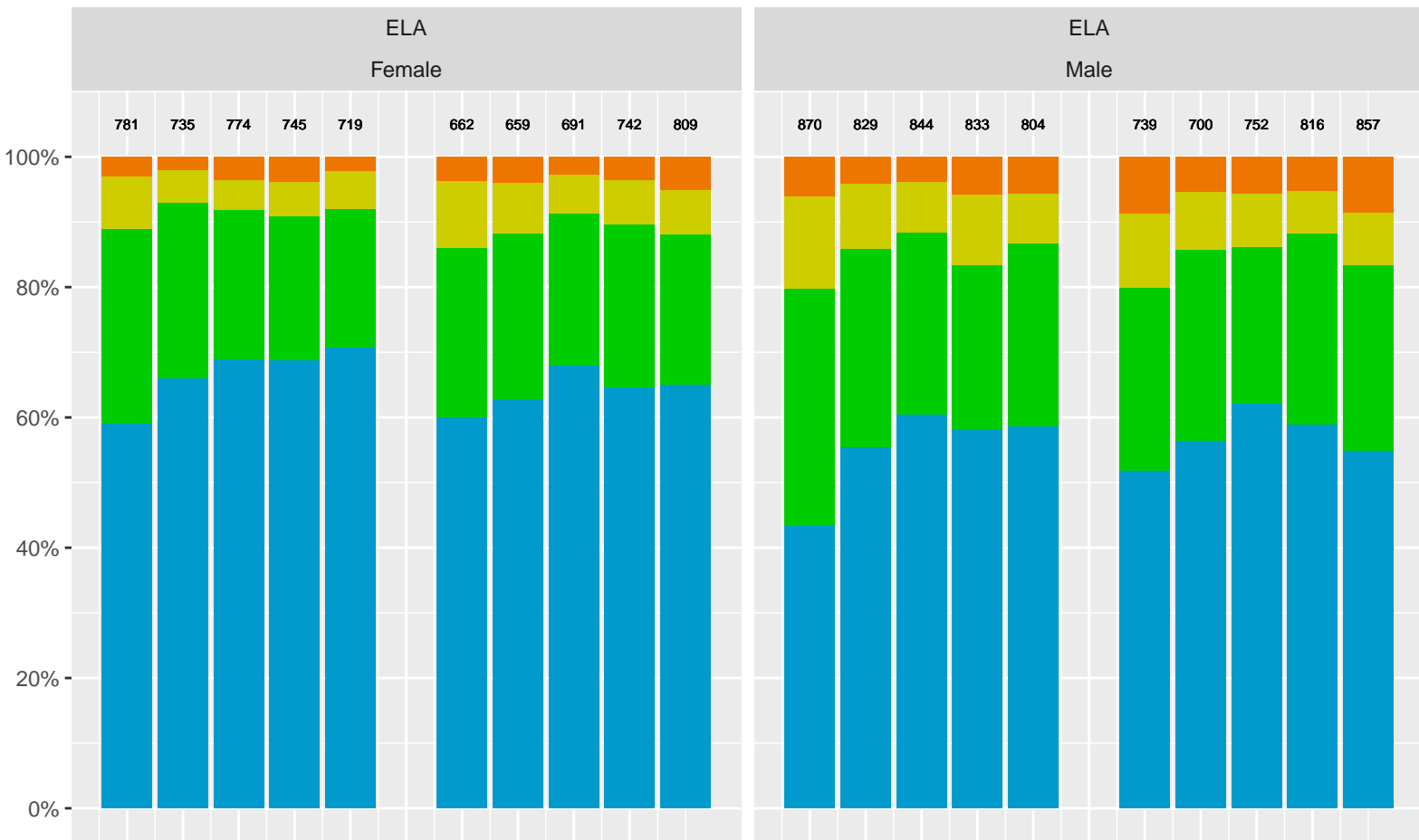


Key: ■ Above Standard ■ Near Standard ■ Below Standard

Racial distribution of San Marino Unified School District students tested in 2024

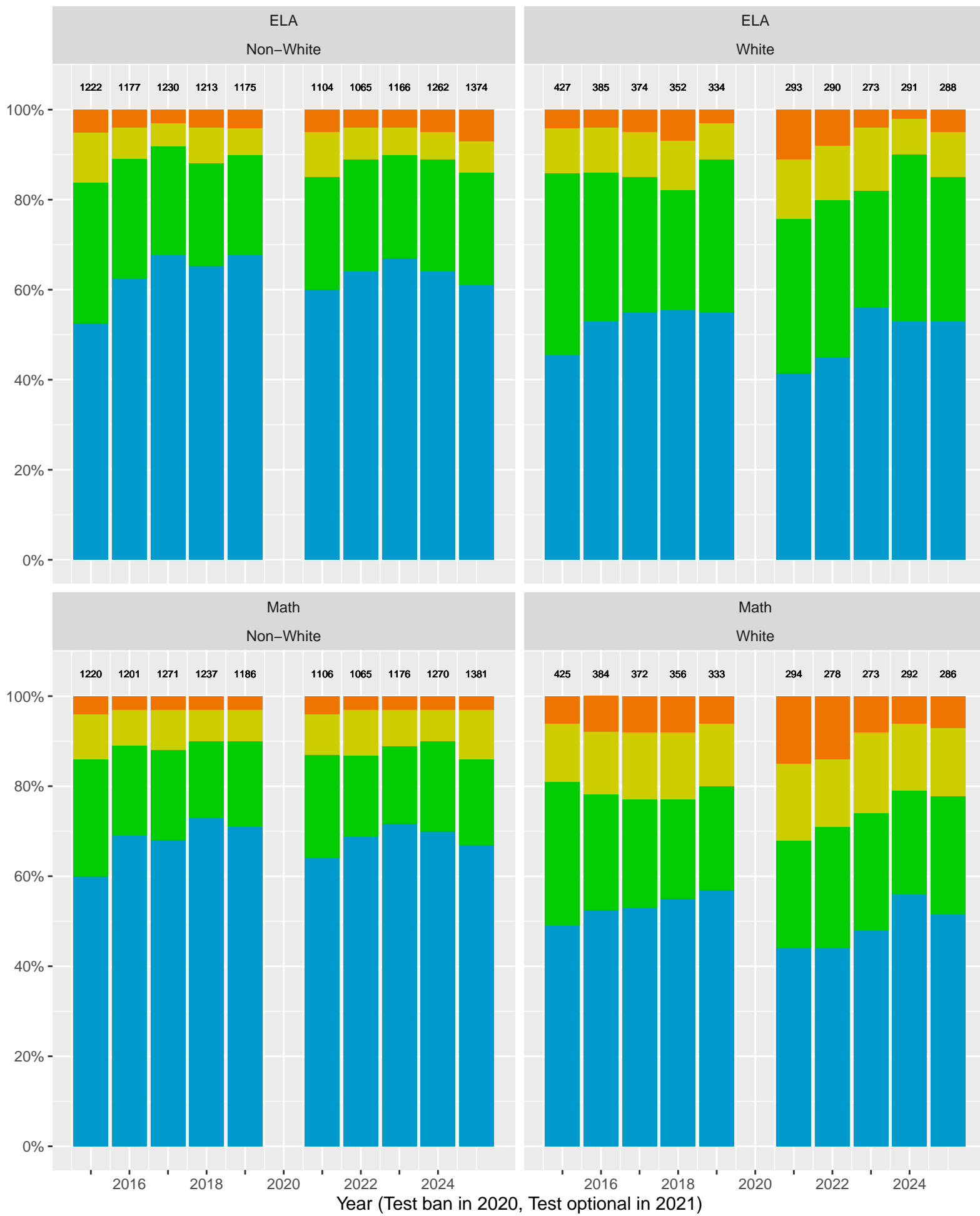


San Marino Unified School District by Sex



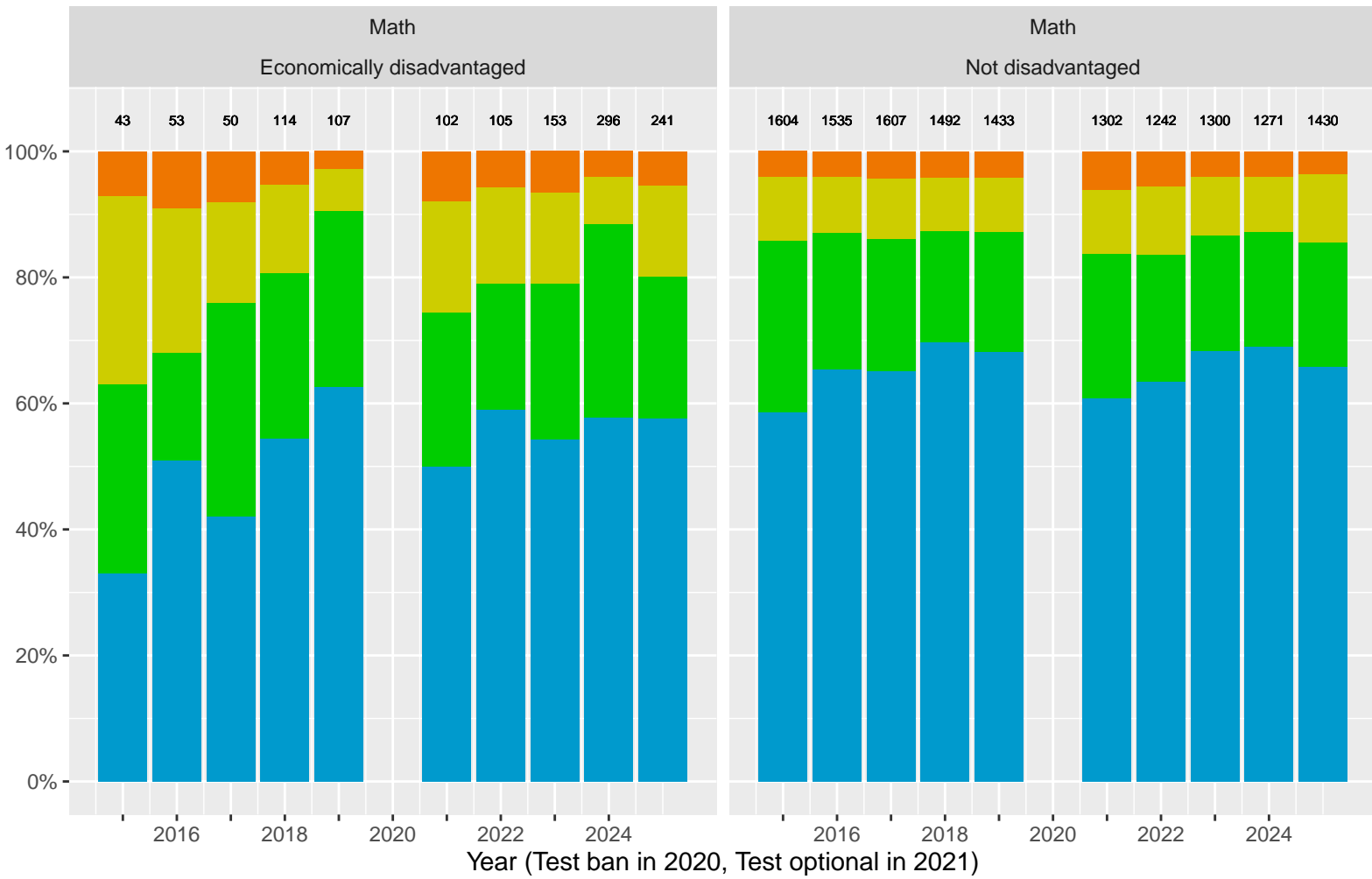
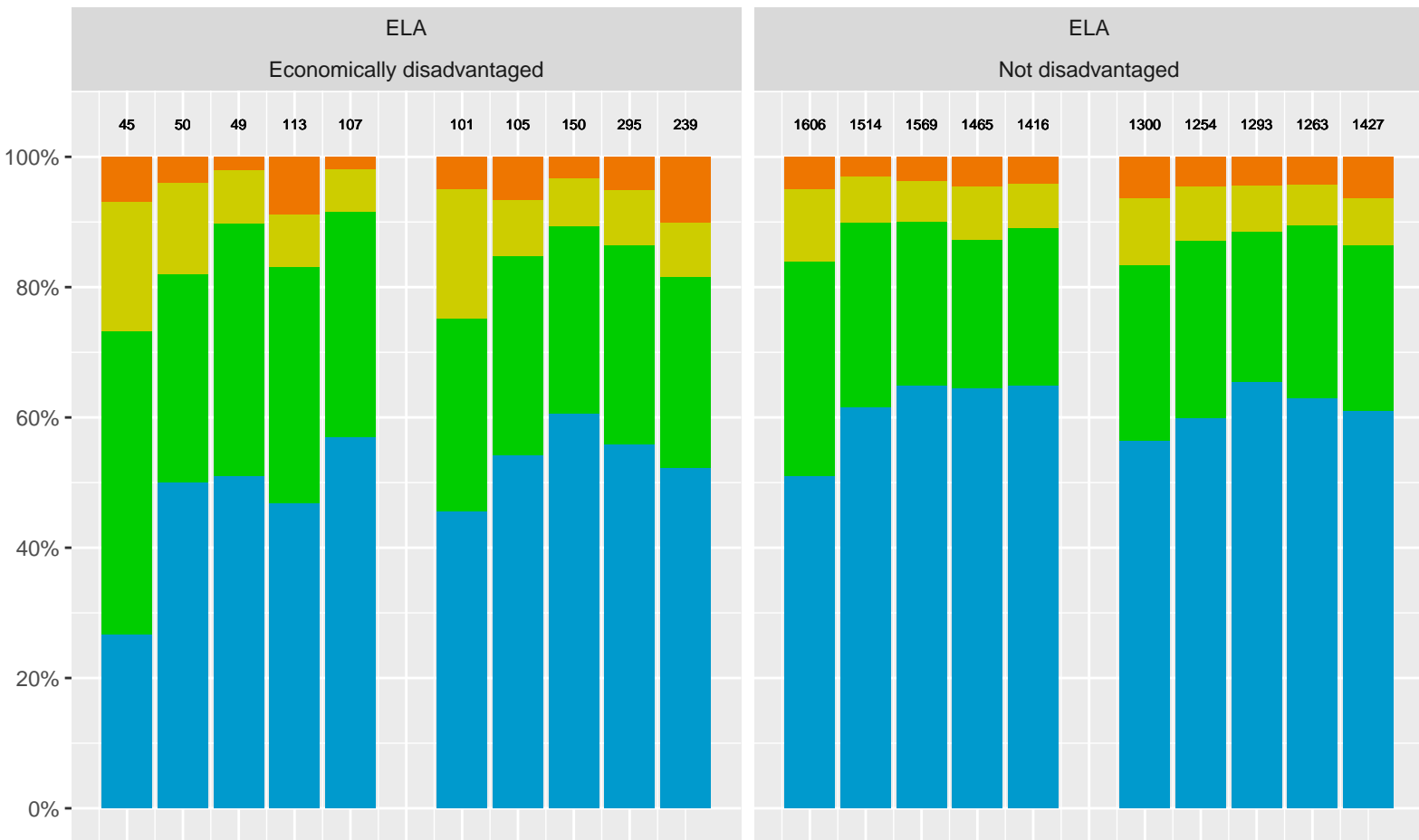
Key: ■ Standard Exceeded ■ Standard Met ■ Standard Nearly Met ■ Standard Not Met

San Marino Unified School District by Non-White + White



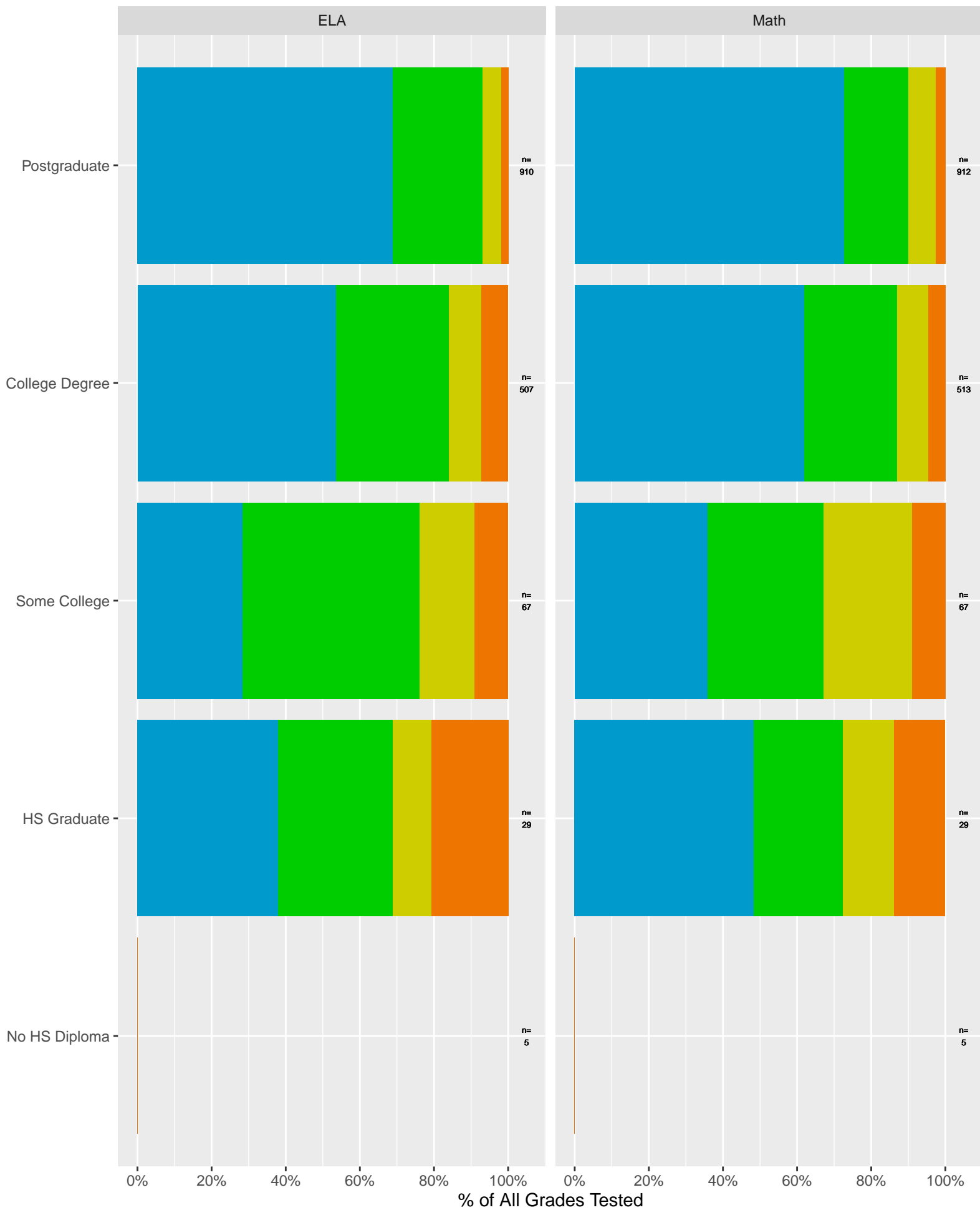
Key: ■ Standard Exceeded ■ Standard Met ■ Standard Nearly Met ■ Standard Not Met

San Marino Unified School District by Economic Disadvantage



Key: ■ Standard Exceeded ■ Standard Met ■ Standard Nearly Met ■ Standard Not Met

San Marino Unified School District (2024) by Parent's Education Level



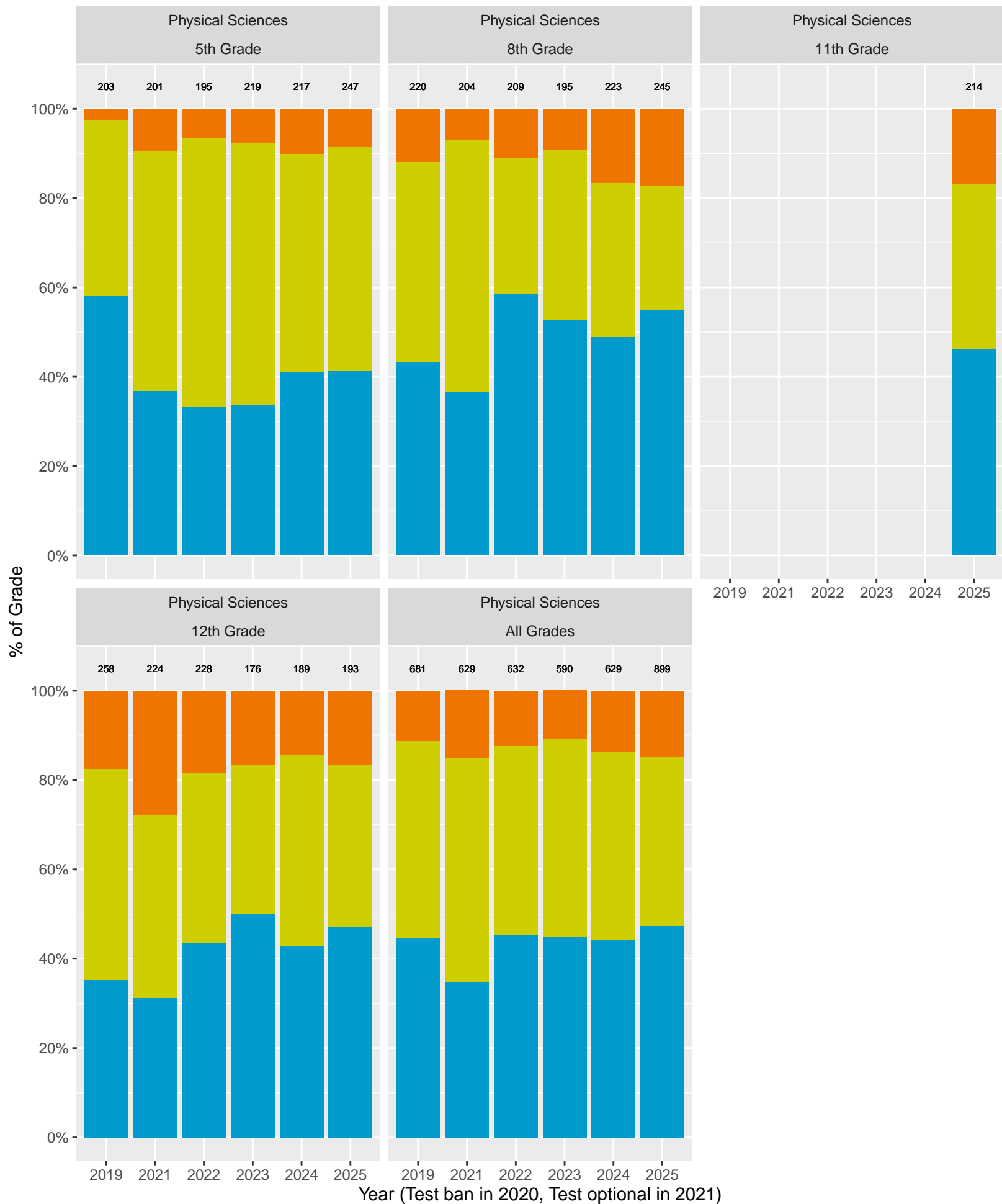
Key: ■ Standard Exceeded ■ Standard Met ■ Standard Nearly Met ■ Standard Not Met

CA Science Test (CAST): San Marino Unified School District (Life Sciences)



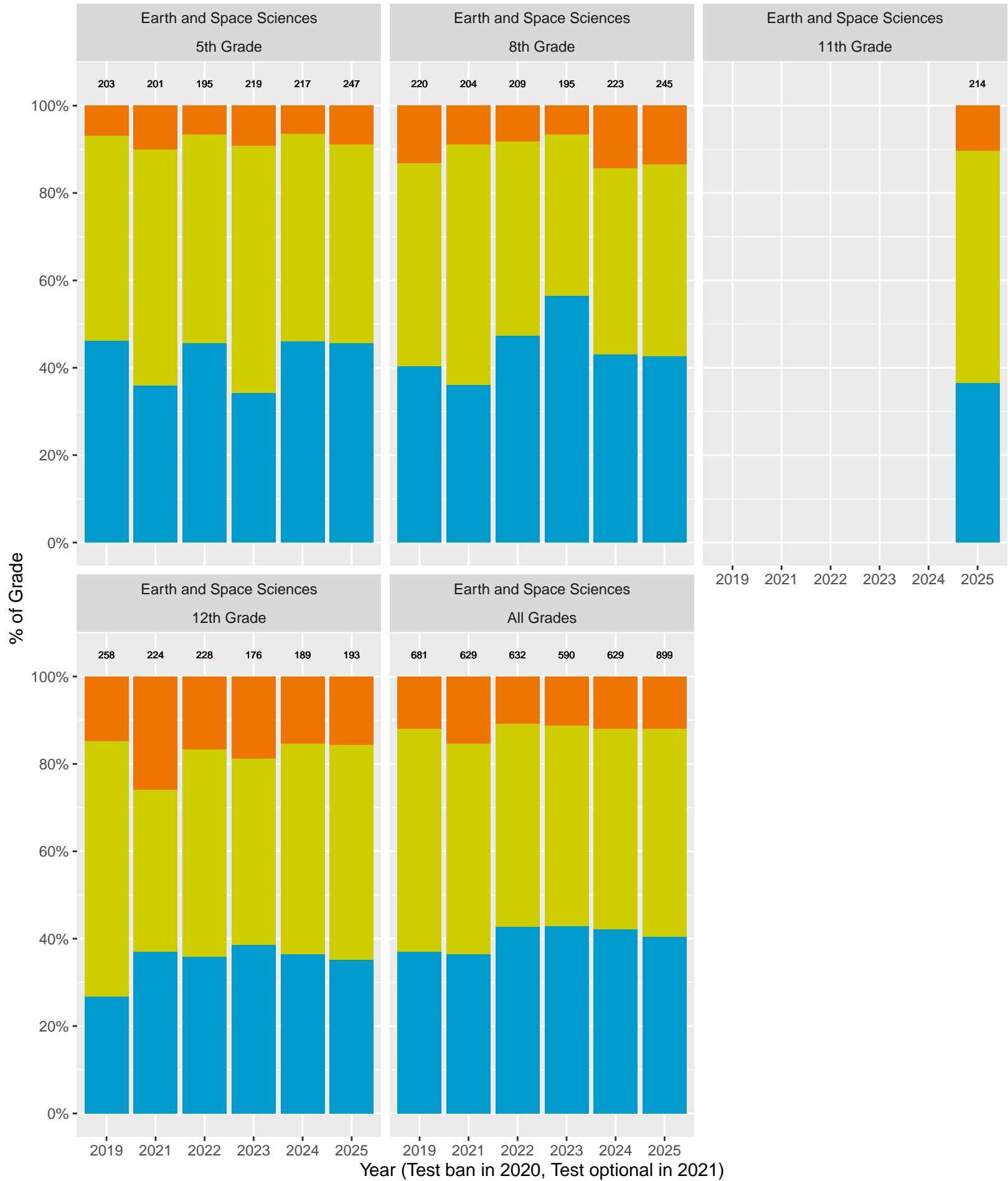
Key: ■ Above Standard ■ Near Standard ■ Below Standard

CA Science Test (CAST): San Marino Unified School District (Physical Sciences)

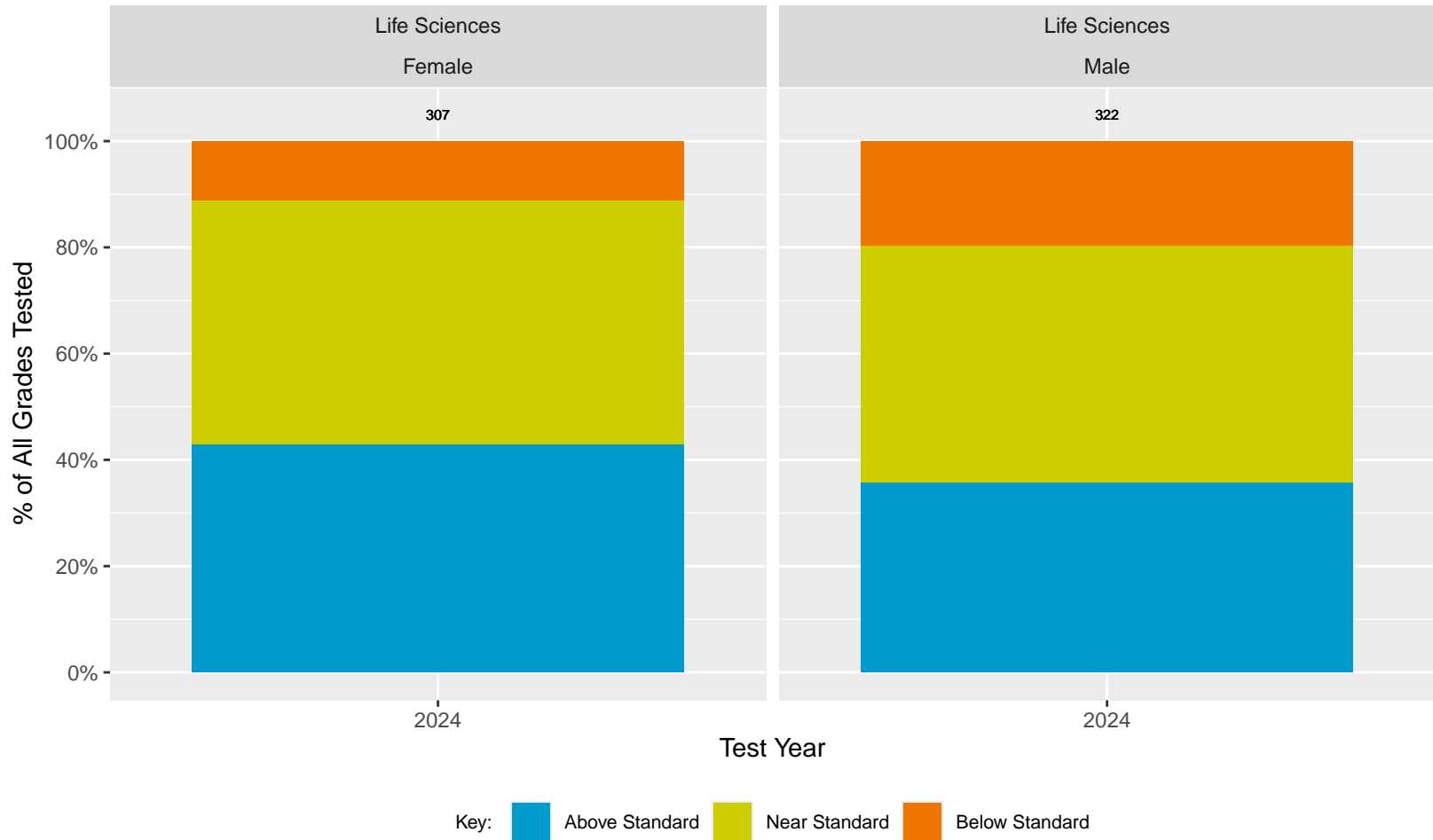


Key: ■ Above Standard ■ Near Standard ■ Below Standard

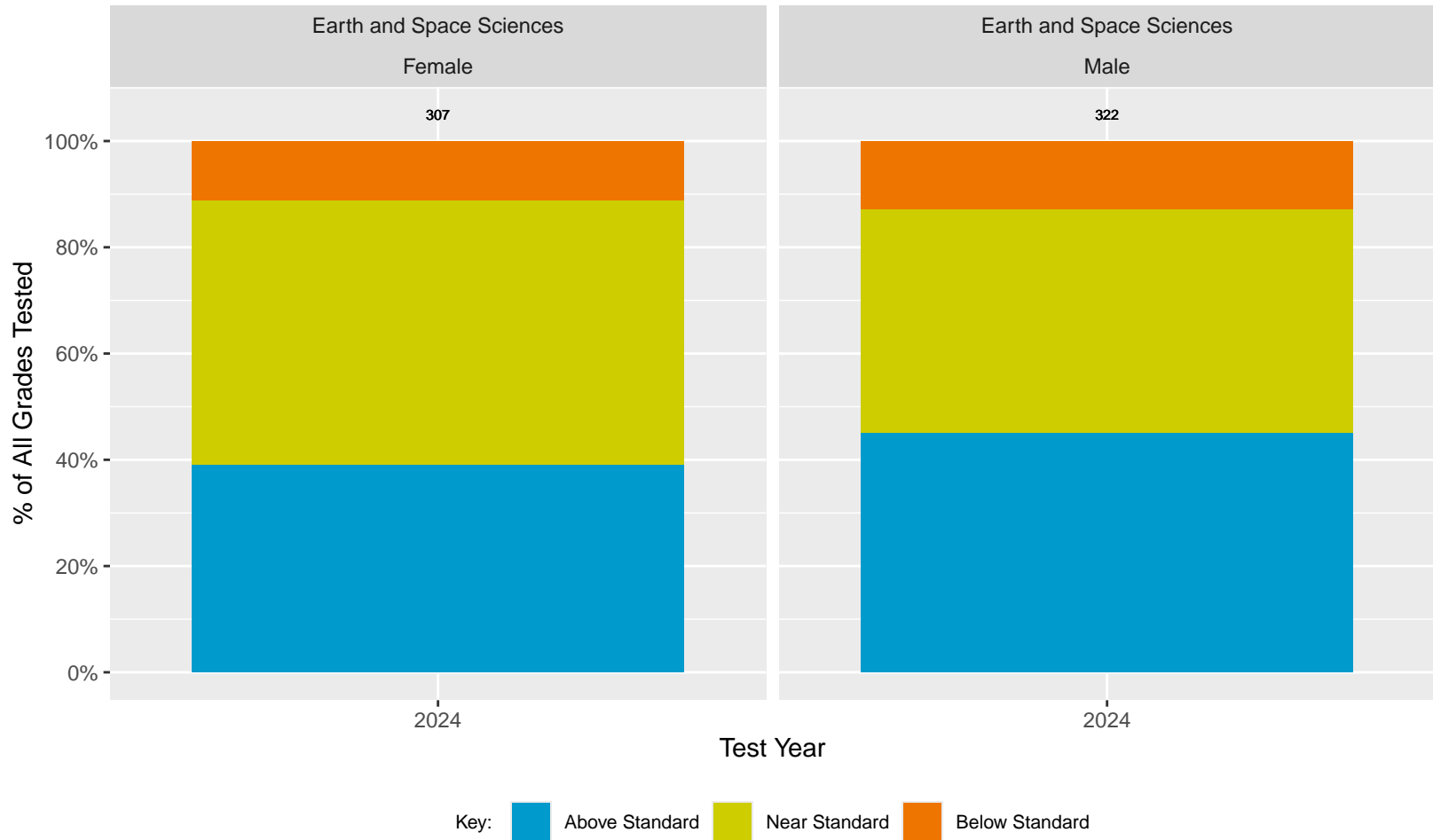
CA Science Test (CAST): San Marino Unified School District (Earth and Space Sciences)



CA Science Test (CAST): San Marino Unified School District (Sex)



CA Science Test (CAST): San Marino Unified School District (Sex)



CA Science Test (CAST): San Marino Unified School District by Non-White + White

Physical Sciences

Non-White

Physical Sciences

White

522

473

506

468

513

719

150

155

124

118

113

177

100%

80%

60%

40%

20%

0%

% of All Grades Tested

2019

2021

2022

2023

2024

2025

2019

2021

2022

2023

2024

2025

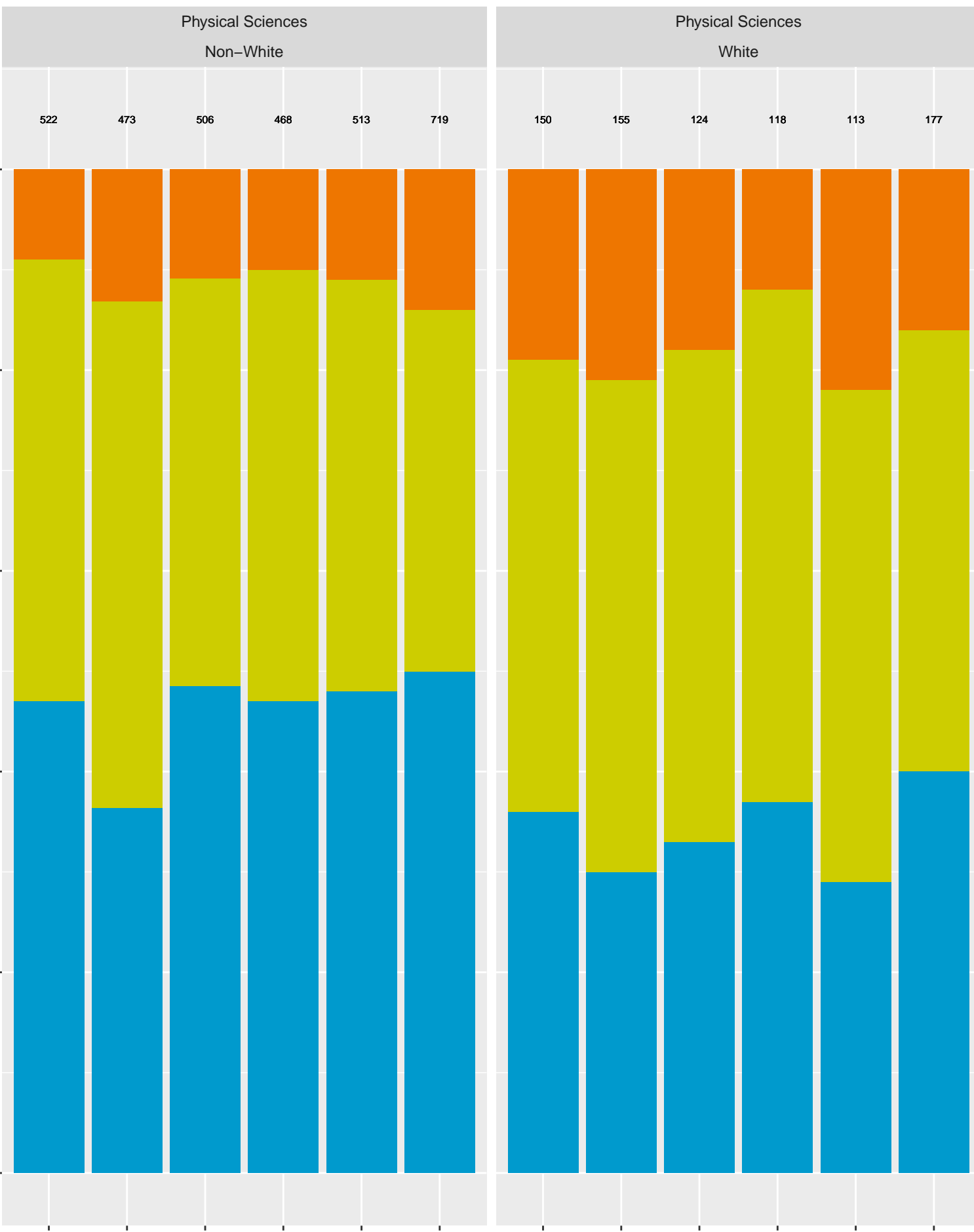
Year (Test ban in 2020, Test optional in 2021)

Key:

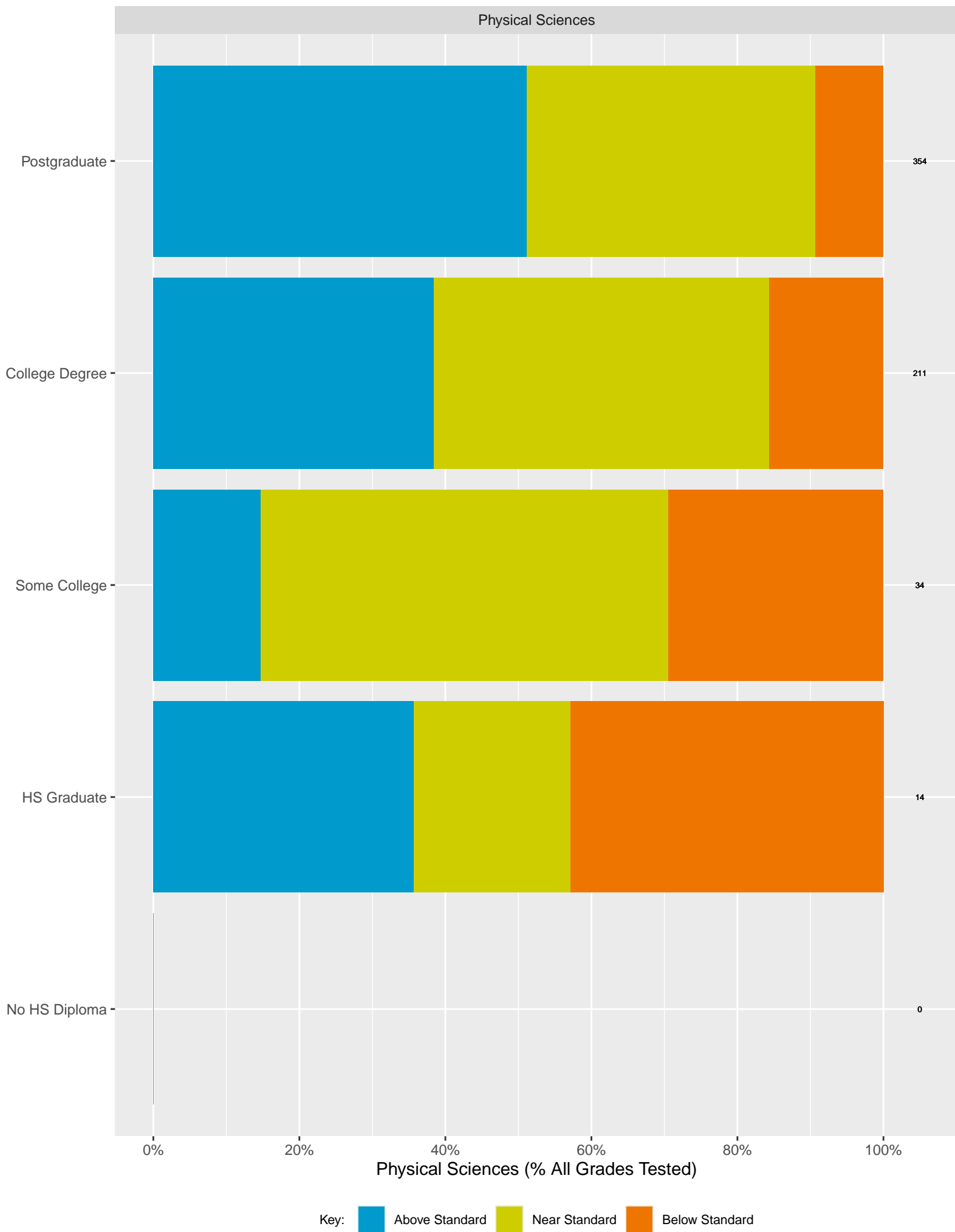
■ Above Standard

■ Near Standard

■ Below Standard



San Marino Unified School District CAST (2024) by Parent's Education Level



Parents for Educational Excellence in Piedmont

Analysis by: Hari Titan, Ph.D.

Email: ExcellencePUSD@gmail.com

CAASPP source data & validation: bit.ly/CAASPPComparison

Copyright 2024 Parents for Educational Excellence in Piedmont

Licensed under Creative Commons Attribution–NonCommercial–ShareAlike 4.0 International