

2015–25 CAASPP Trends for the Piedmont Unified School District

Feb 2026
Piedmont, California



TABLE OF CONTENTS

High Level ELA and Math, trending by Year and broken out by Grade.....p 3

Year over Year (YoY) variation by Grade for Standard Met (and Exceeded).....p 4

ELA and Math drilldown to Subject Areas 1–4, by Year, by Grade.....p 5–8

Racial Distribution of Students in 2024.....p 9

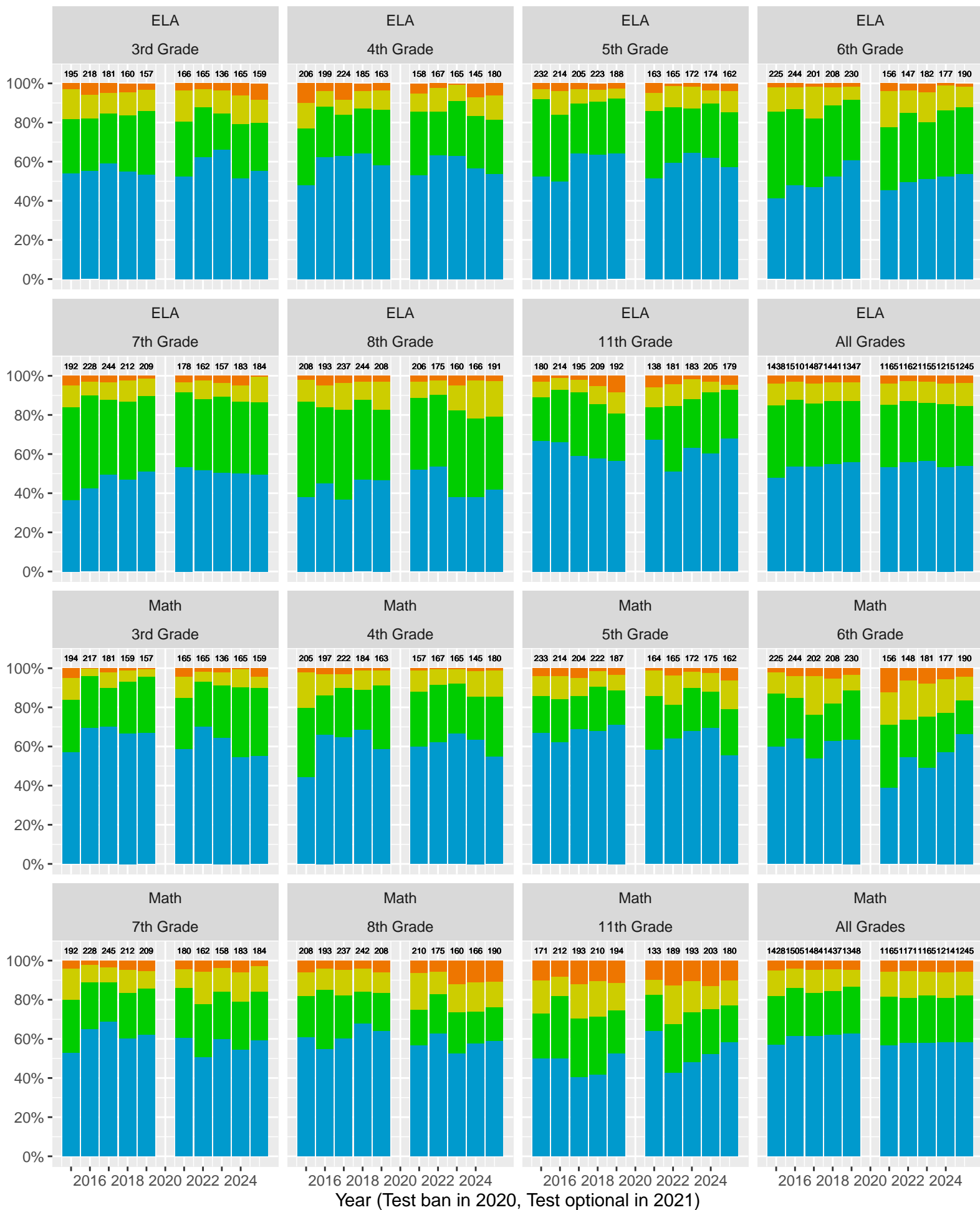
All Grade ELA and Math by Sex, (Non–)White, Race, Disadvantage, Parent Ed p 10–14

CAST Life Sciences, Physical Science, Earth and Space Science.....p 15–17

CAST Life Sciences, Earth and Space by Sex.....p 18

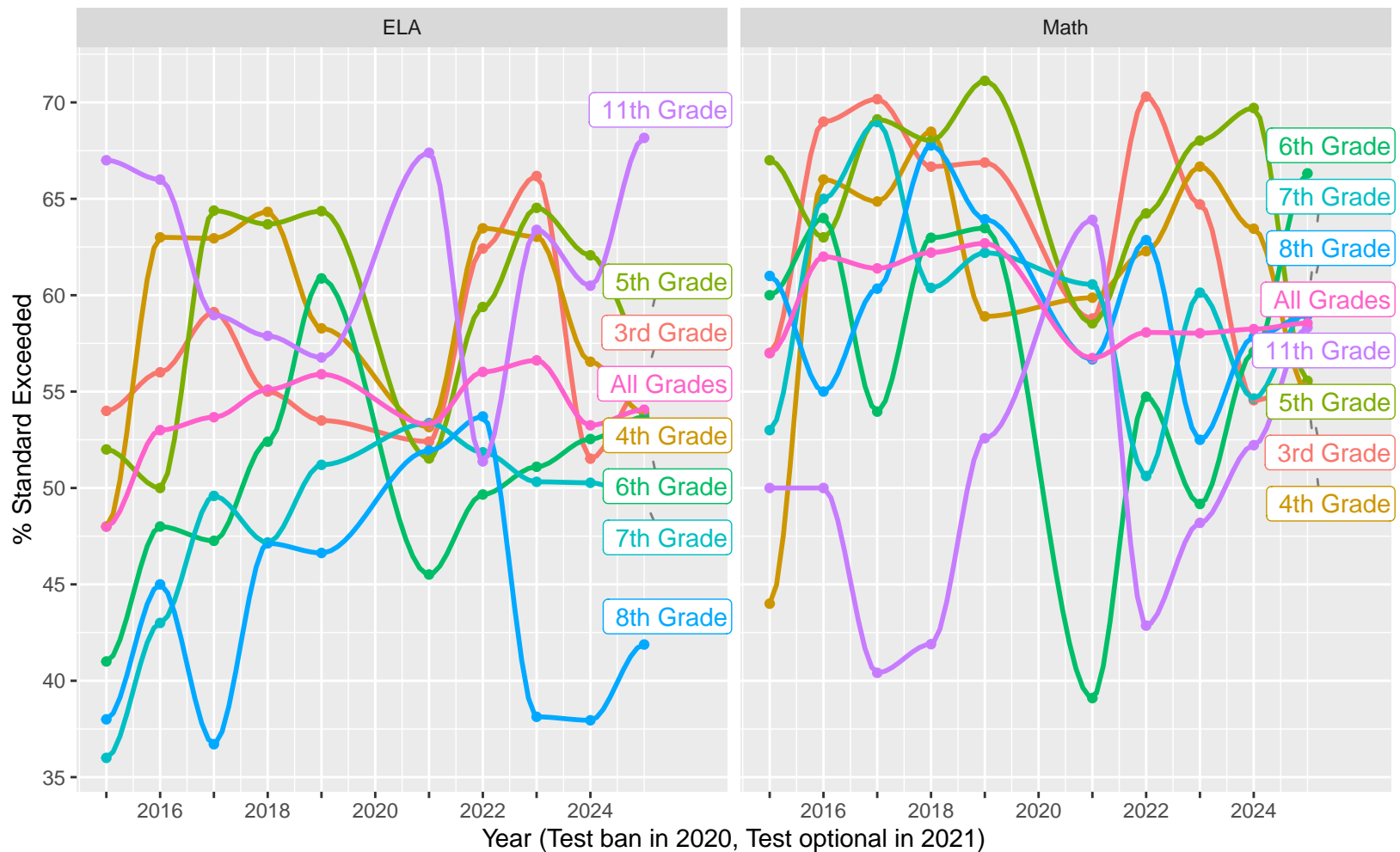
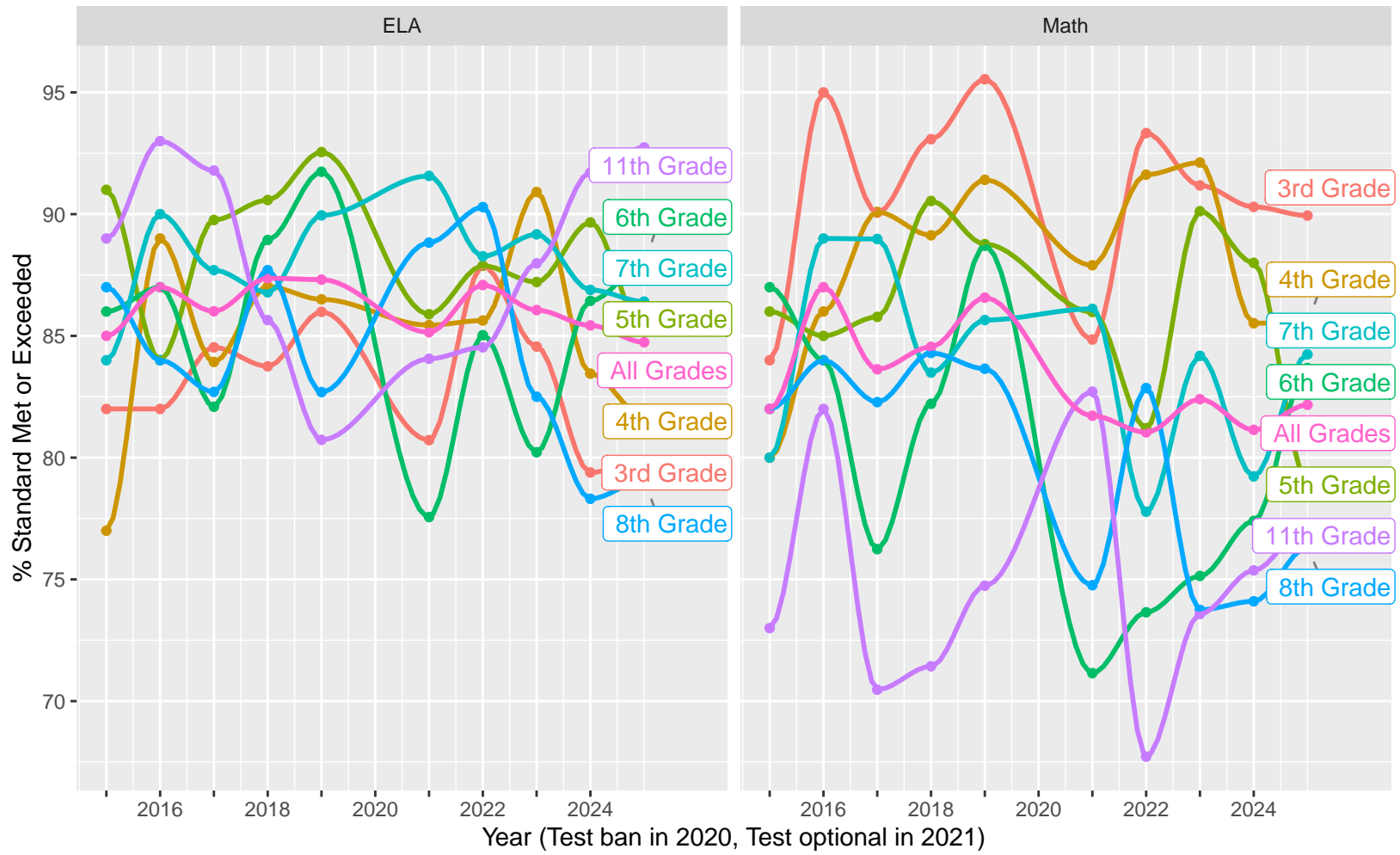
CAST Physical Science by (Non–)White, Parent Education.....p 19–20

CAASPP Test Performance: Piedmont Unified School District

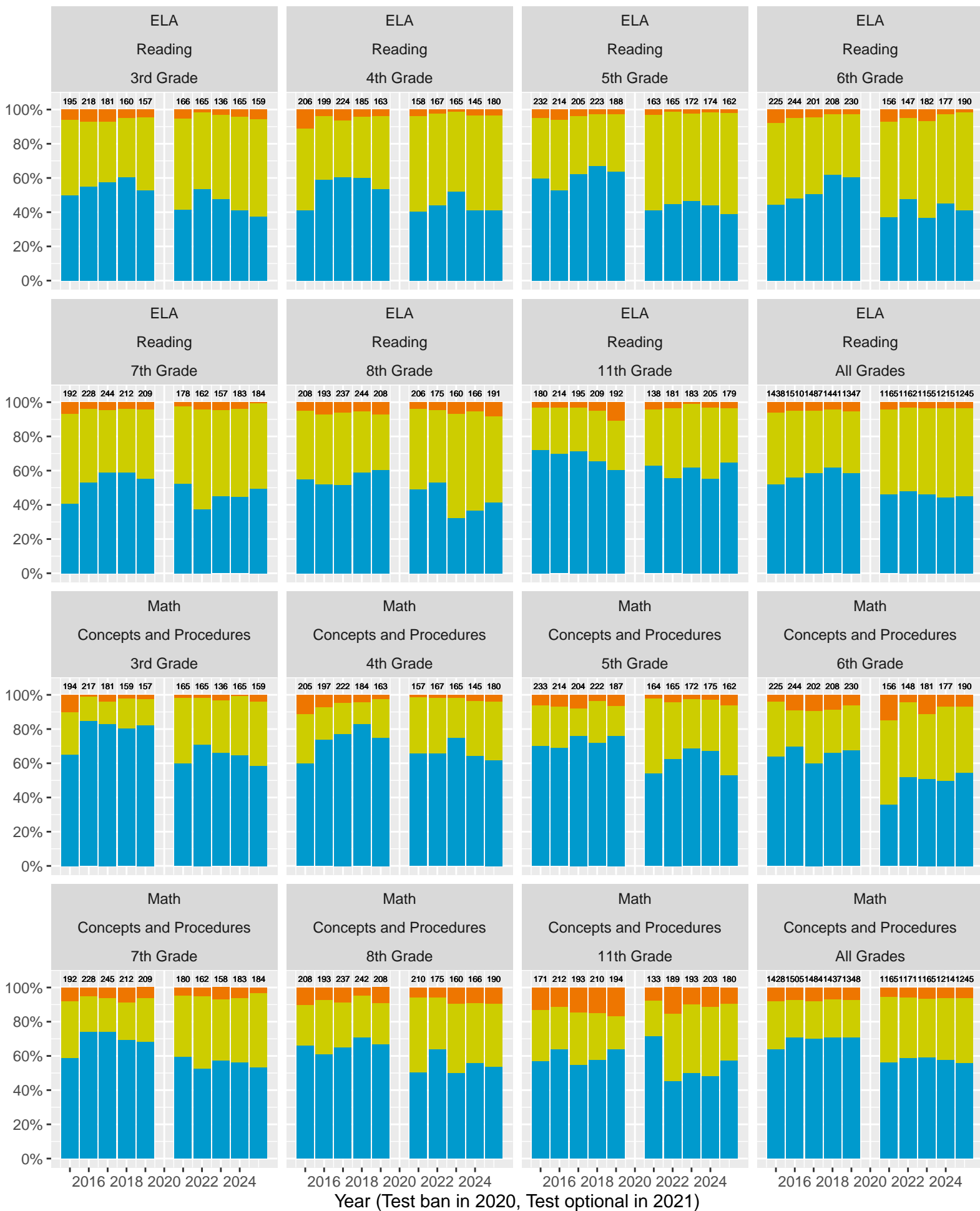


Key: ■ Standard Exceeded ■ Standard Met ■ Standard Nearly Met ■ Standard Not Met

Grades stacked (trends, variance, outliers)

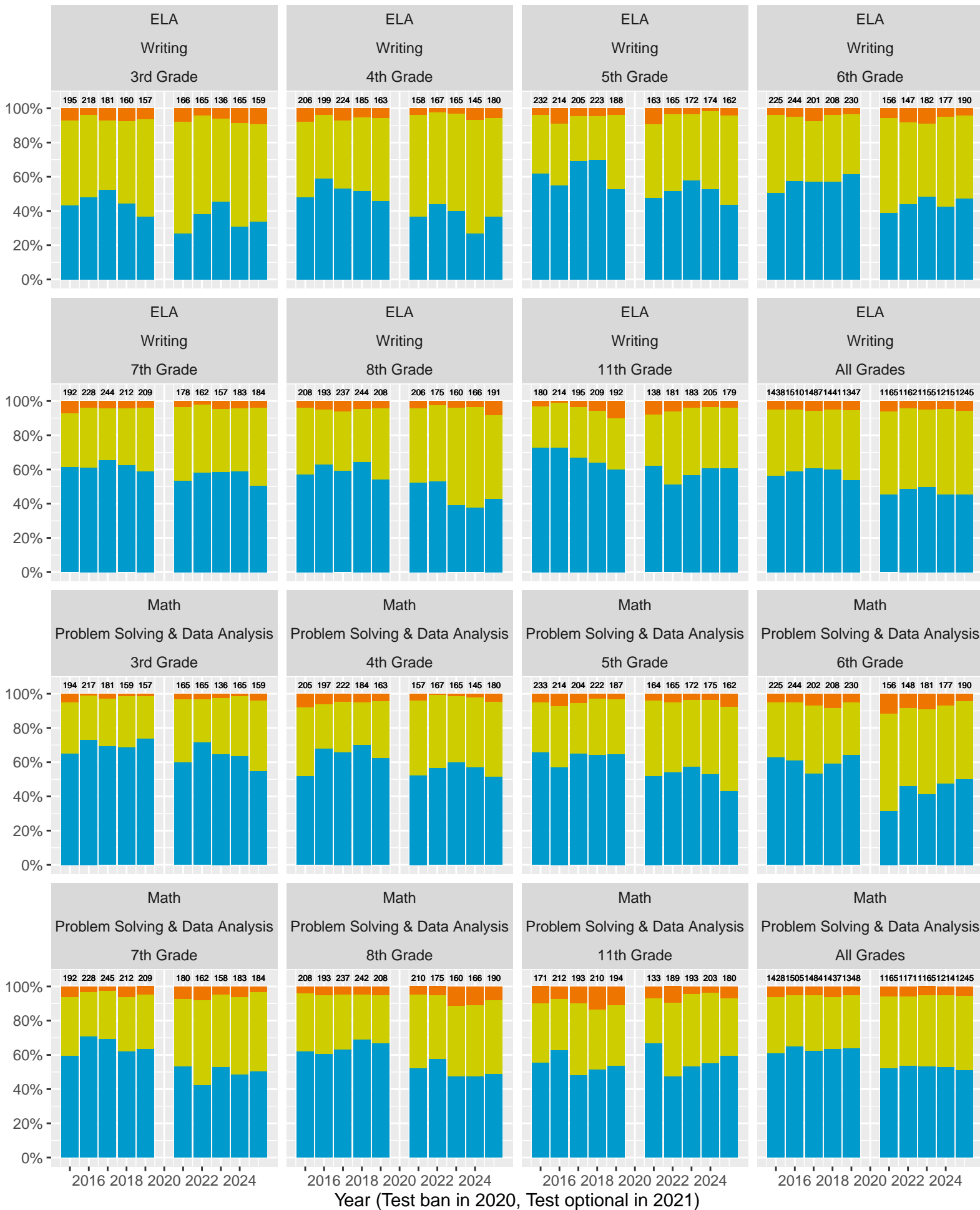


Piedmont Unified School District (Subject Area 1)



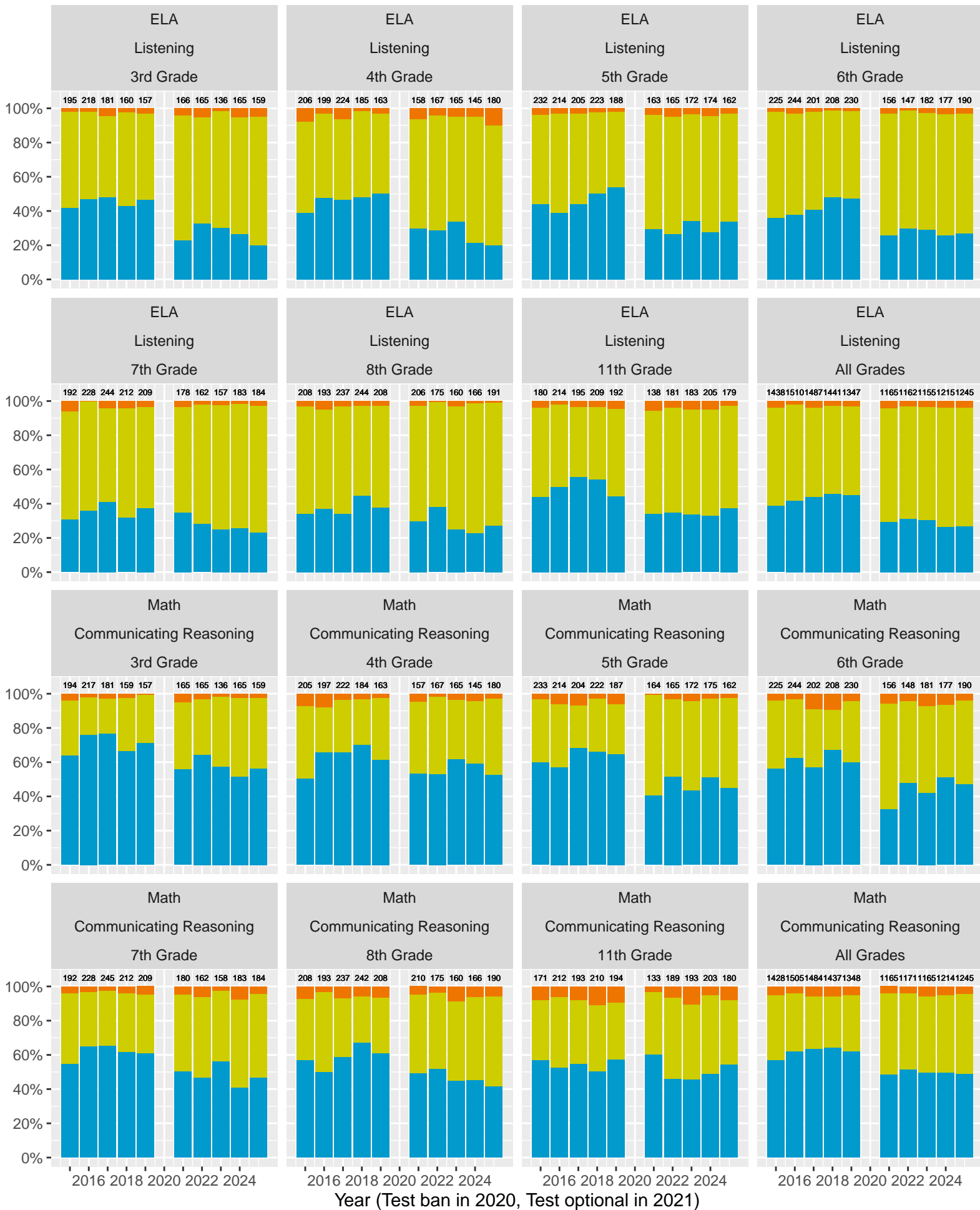
Key: ■ Above Standard ■ Near Standard ■ Below Standard

Piedmont Unified School District (Subject Area 2)



Key: ■ Above Standard ■ Near Standard ■ Below Standard

Piedmont Unified School District (Subject Area 3)



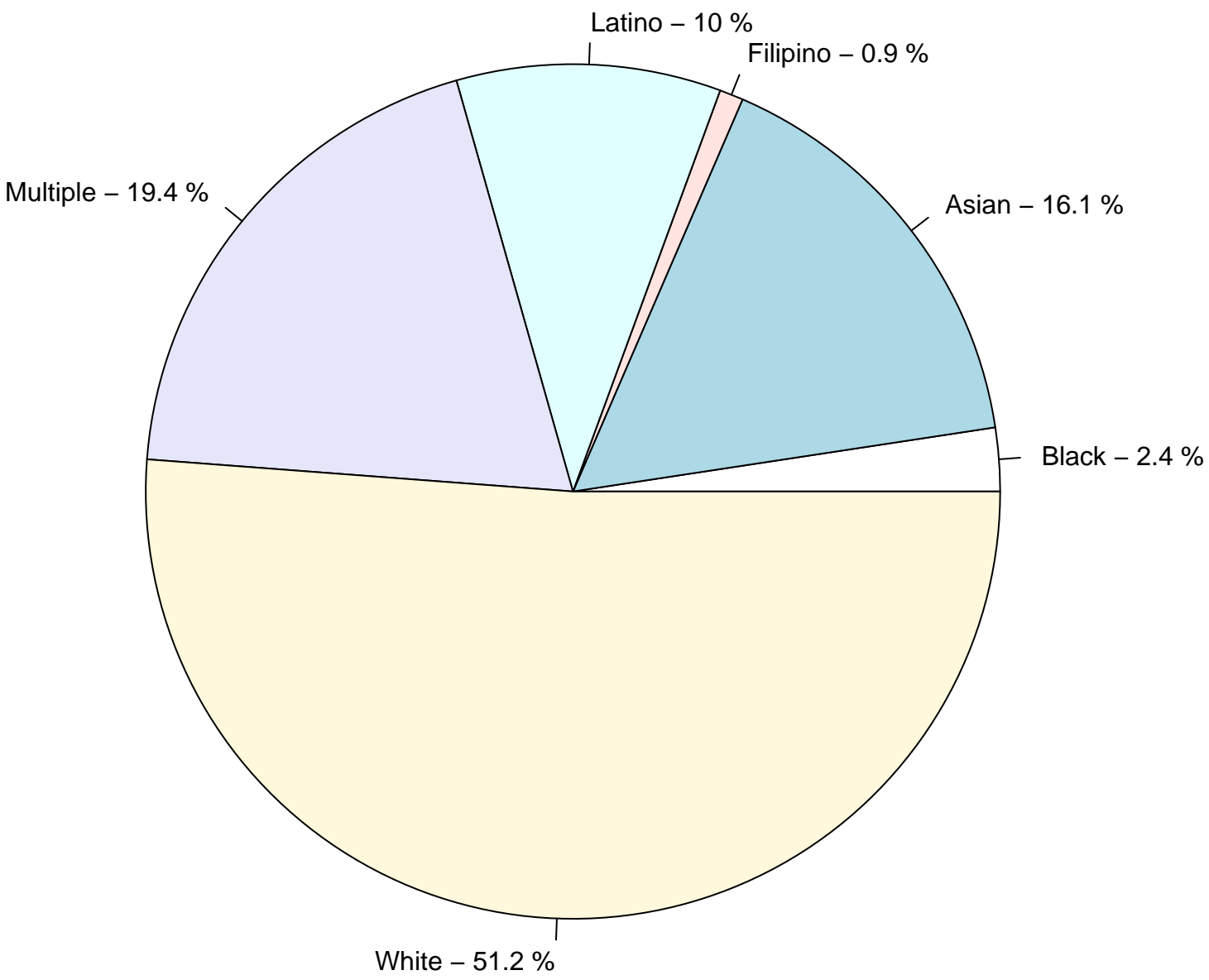
Key: ■ Above Standard ■ Near Standard ■ Below Standard

Piedmont Unified School District (Subject Area 4)

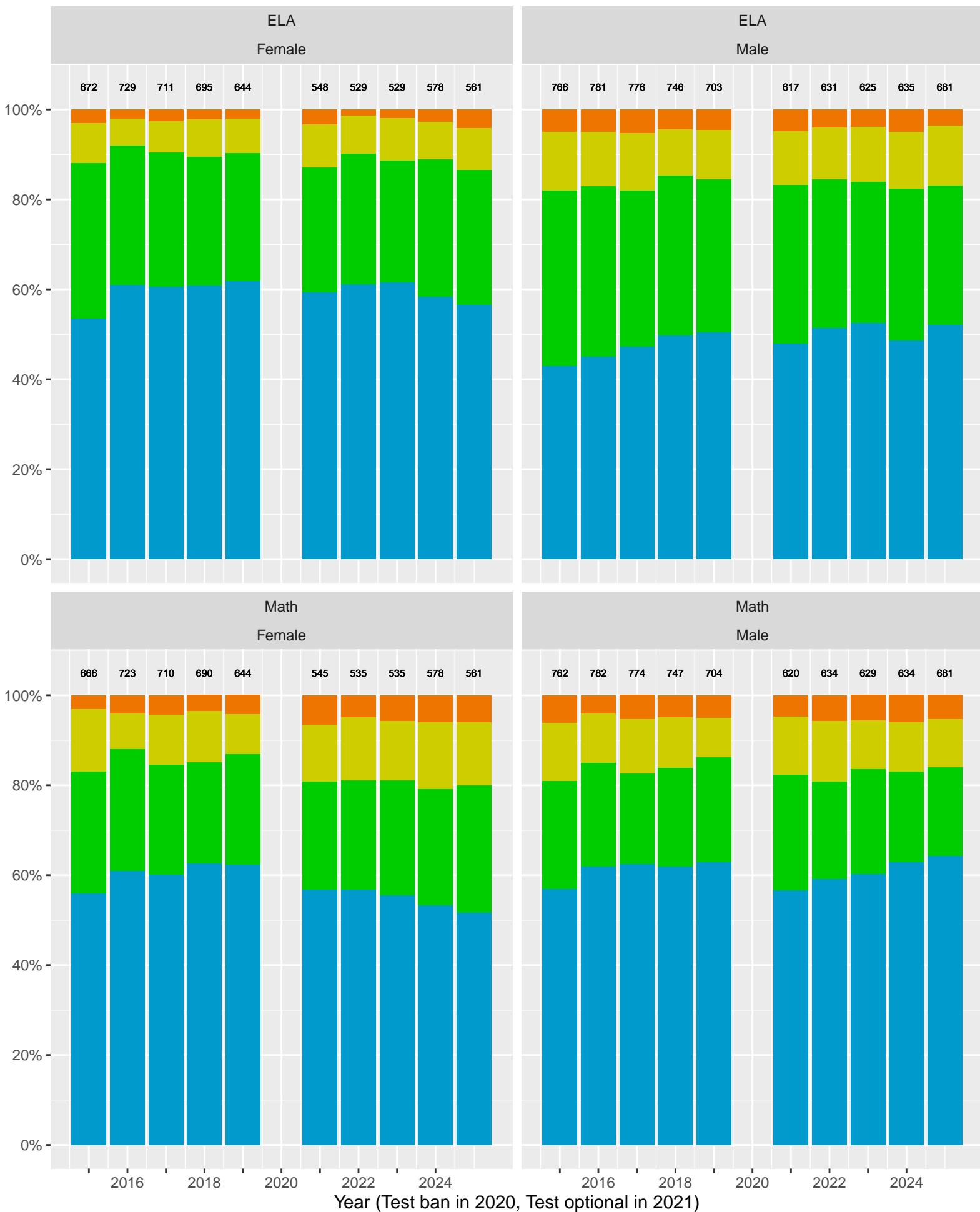


Key: ■ Above Standard ■ Near Standard ■ Below Standard

Racial distribution of Piedmont Unified School District students tested in 2024

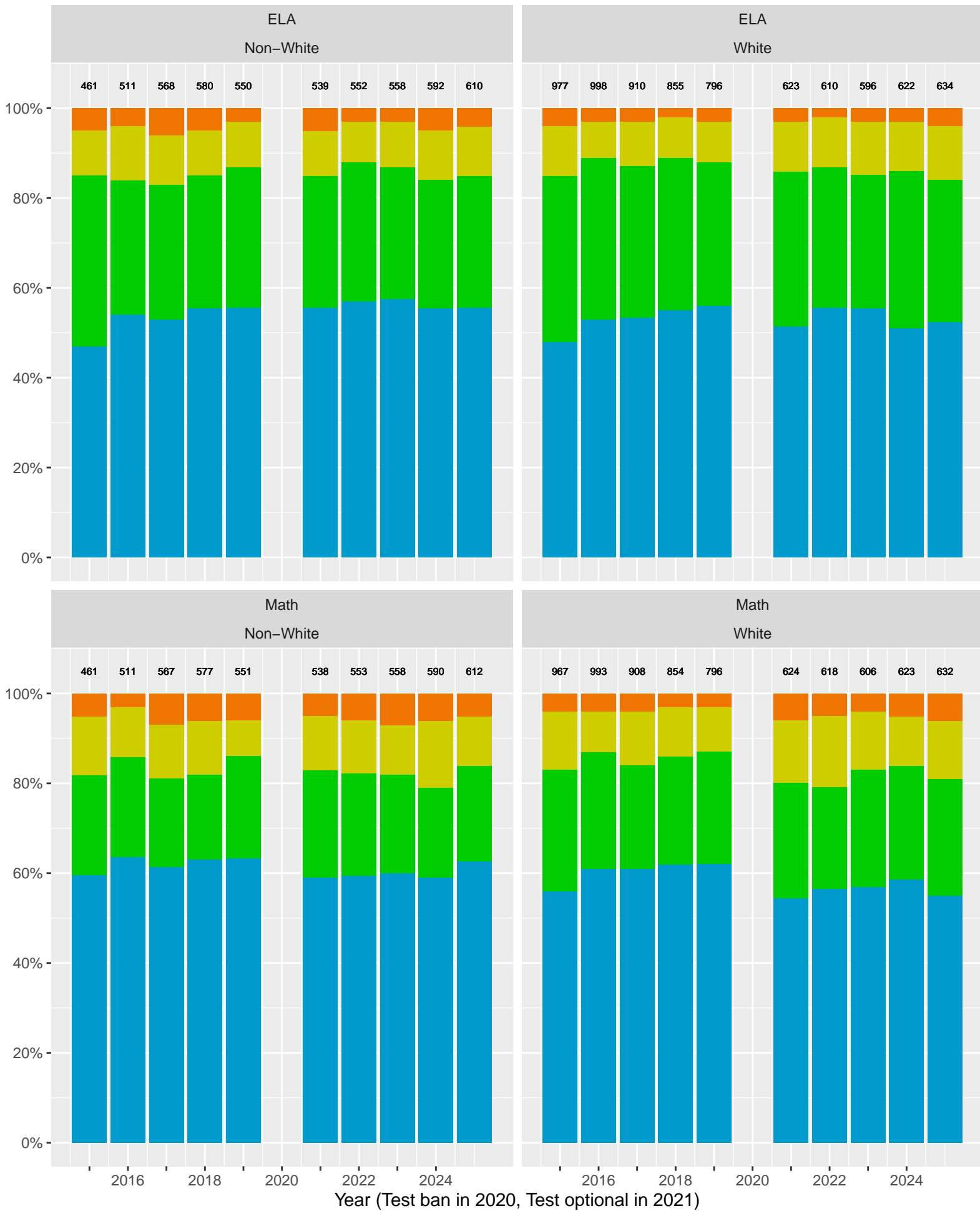


Piedmont Unified School District by Sex



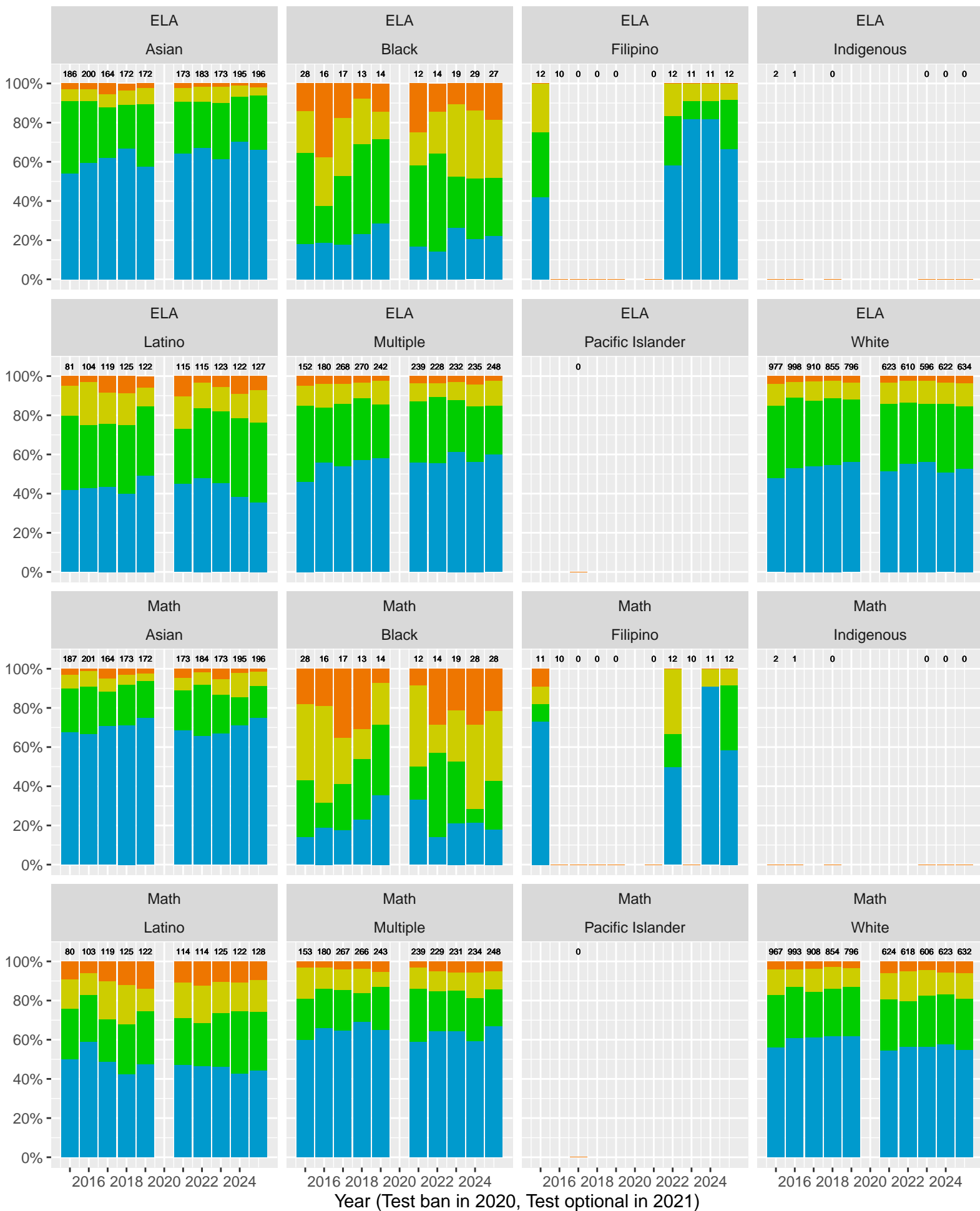
Key: ■ Standard Exceeded ■ Standard Met ■ Standard Nearly Met ■ Standard Not Met

Piedmont Unified School District by Non-White + White



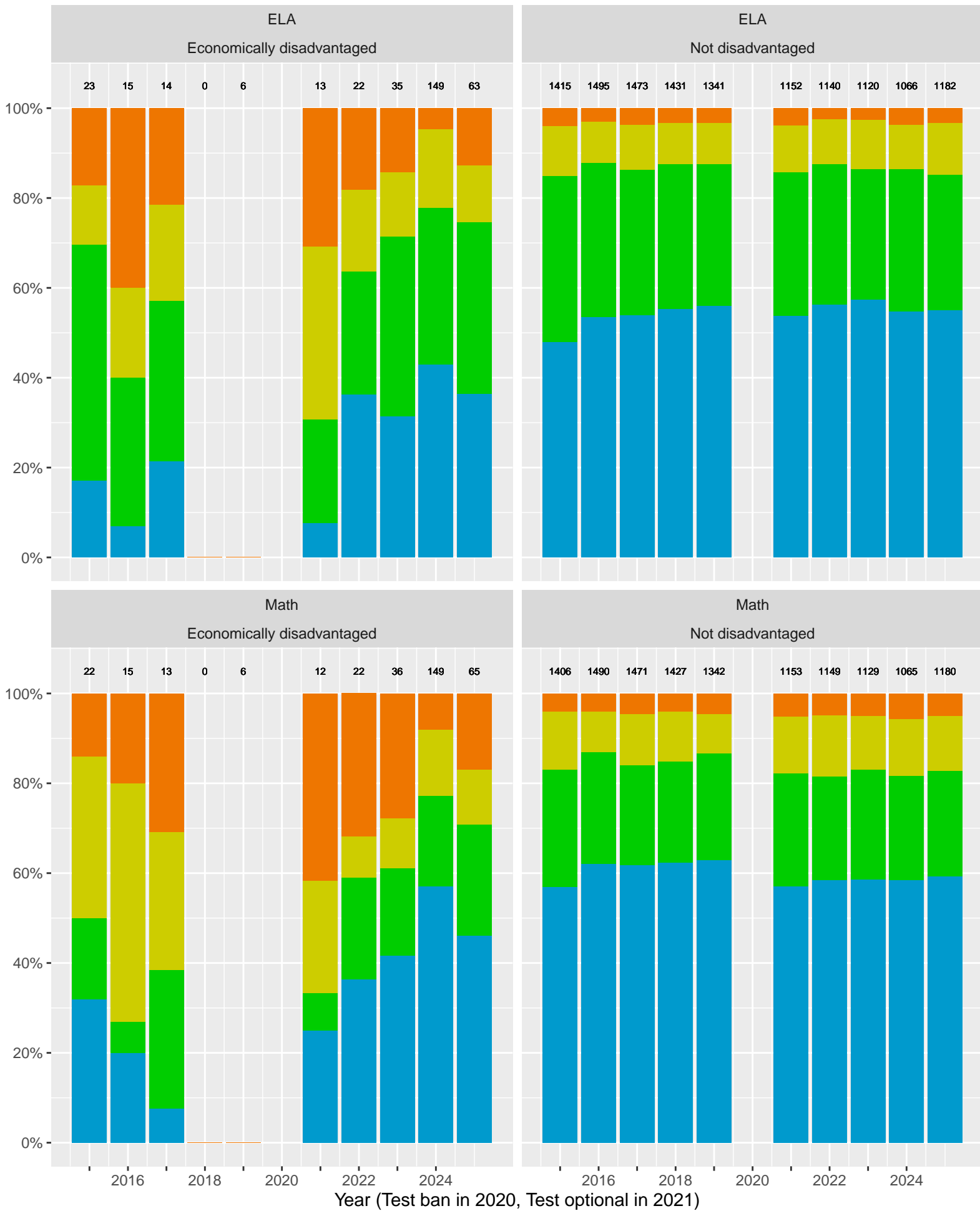
Key: ■ Standard Exceeded ■ Standard Met ■ Standard Nearly Met ■ Standard Not Met

CAASPP Test Performance: Piedmont Unified School District by Race



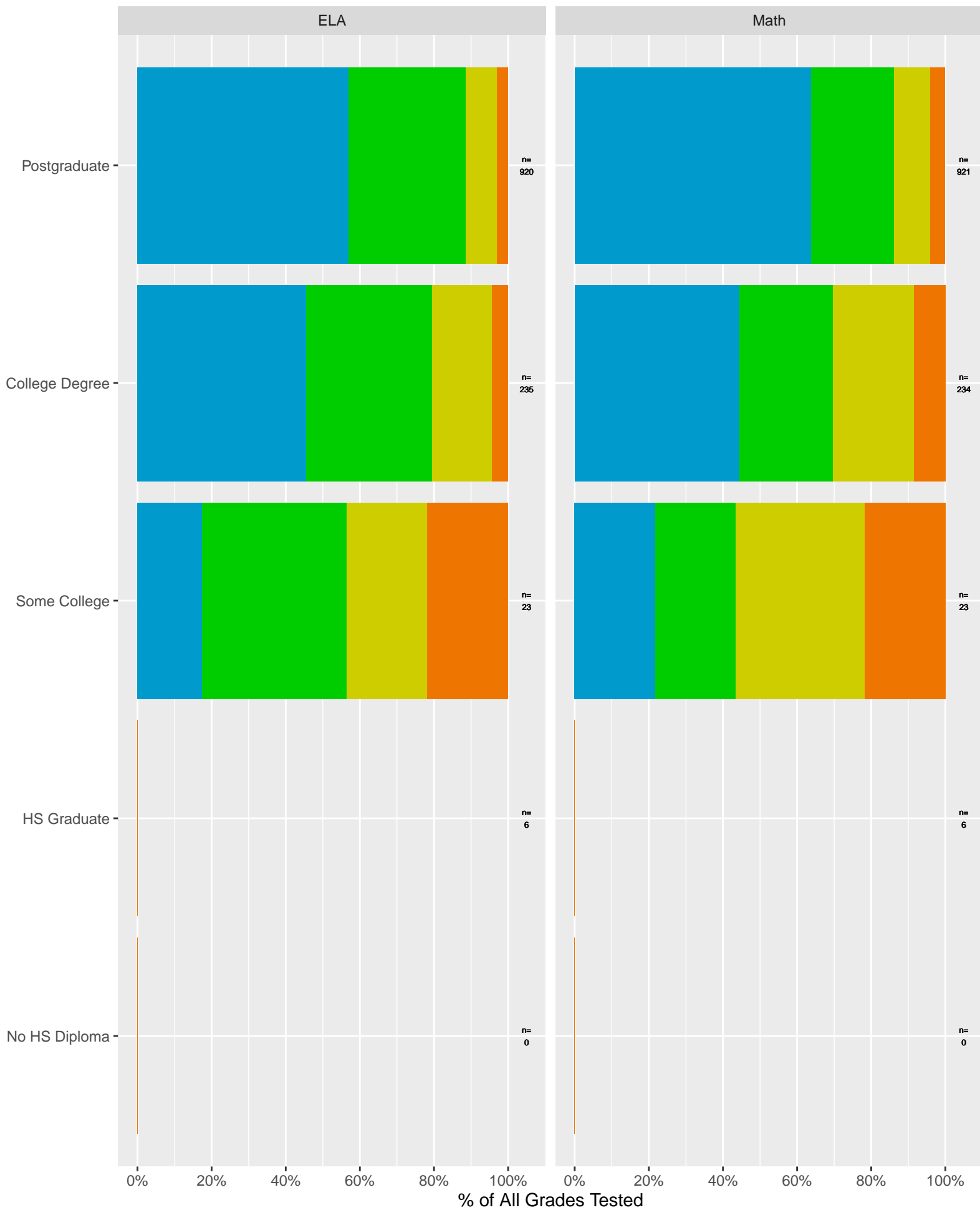
Key: ■ Standard Exceeded ■ Standard Met ■ Standard Nearly Met ■ Standard Not Met

Piedmont Unified School District by Economic Disadvantage



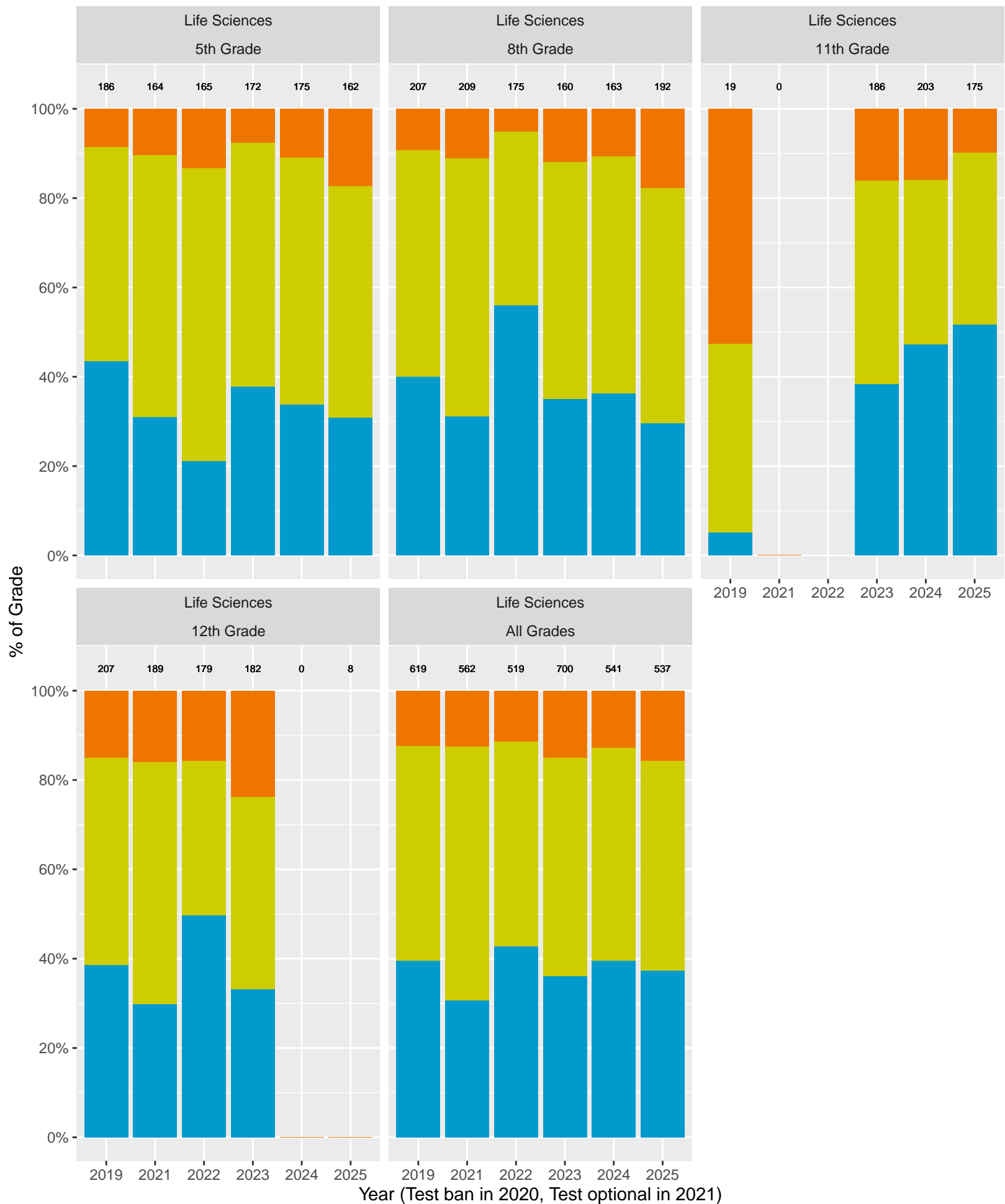
Key: ■ Standard Exceeded ■ Standard Met ■ Standard Nearly Met ■ Standard Not Met

Piedmont Unified School District (2024) by Parent's Education Level



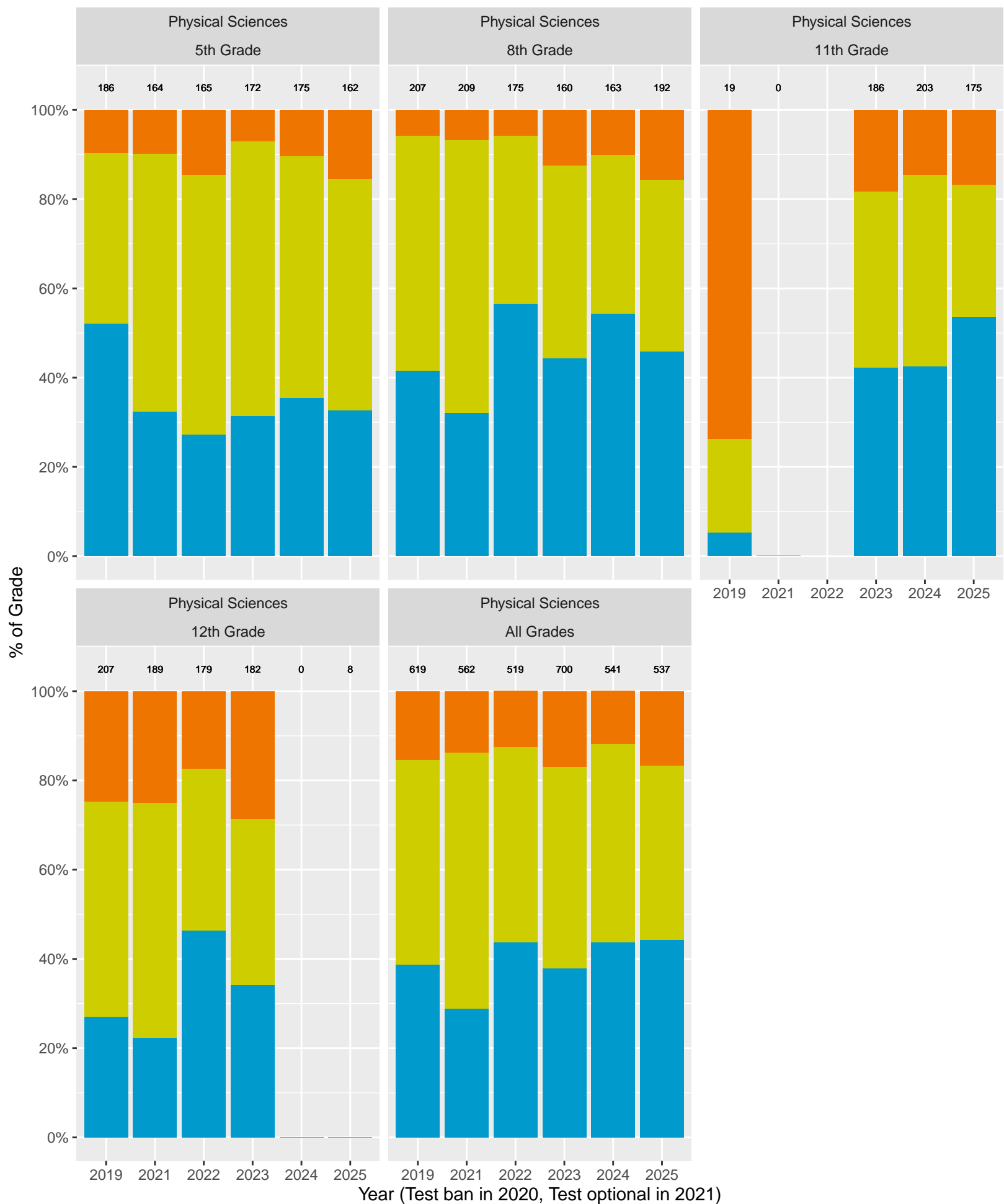
Key: ■ Standard Exceeded ■ Standard Met ■ Standard Nearly Met ■ Standard Not Met

CA Science Test (CAST): Piedmont Unified School District (Life Sciences)



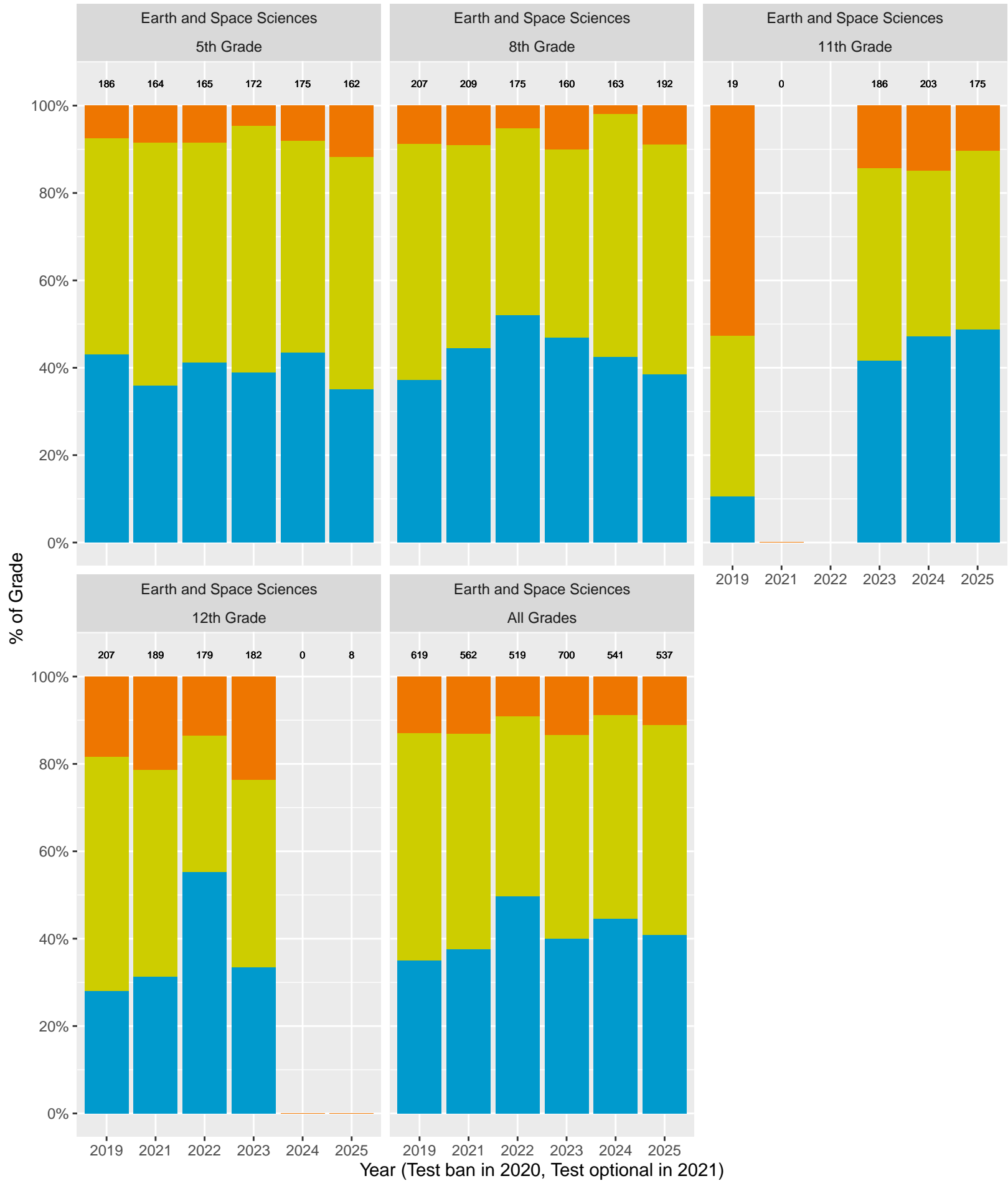
Key: ■ Above Standard ■ Near Standard ■ Below Standard

CA Science Test (CAST): Piedmont Unified School District (Physical Sciences)



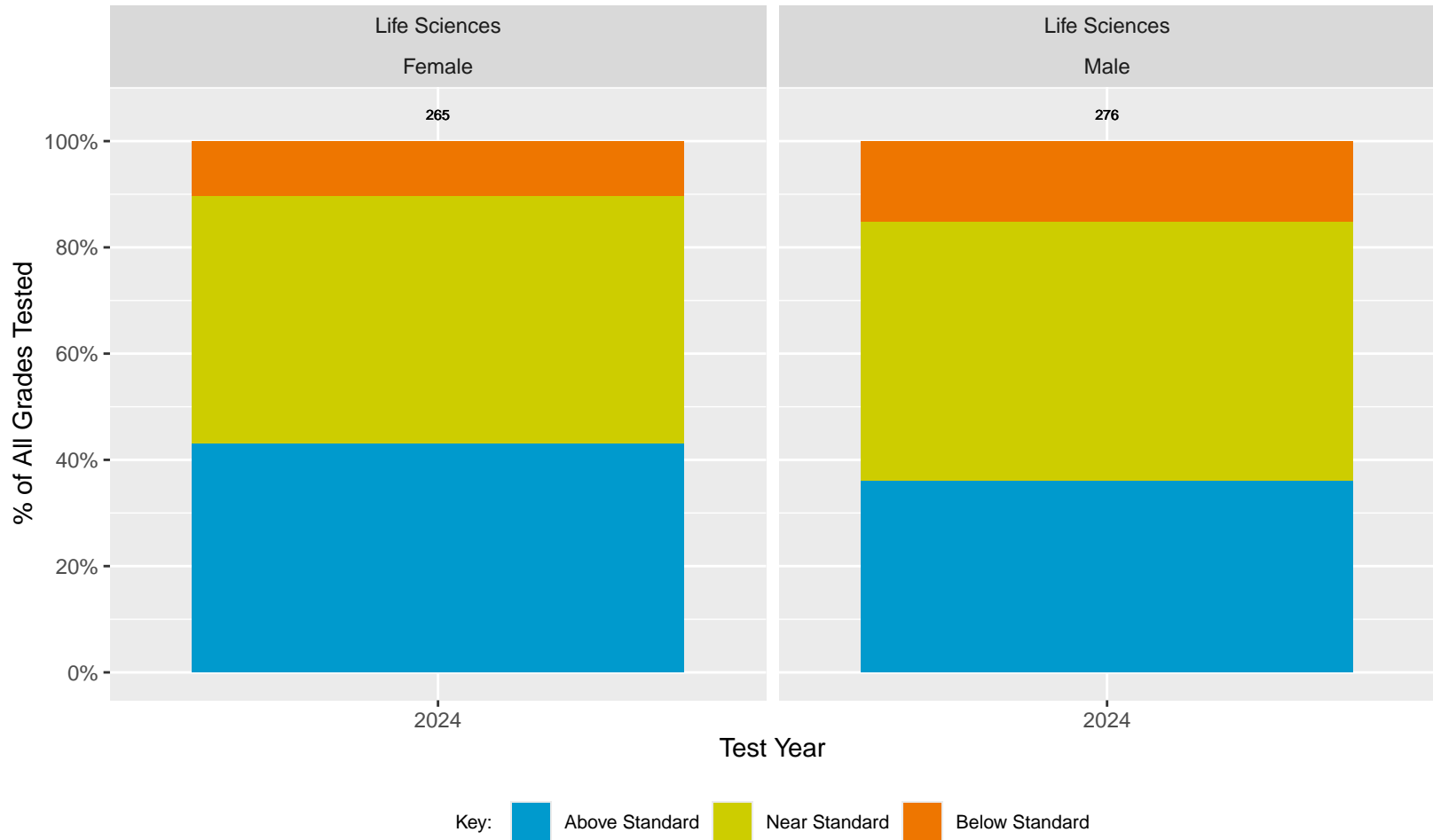
Key: ■ Above Standard ■ Near Standard ■ Below Standard

CA Science Test (CAST): Piedmont Unified School District (Earth and Space Sciences)

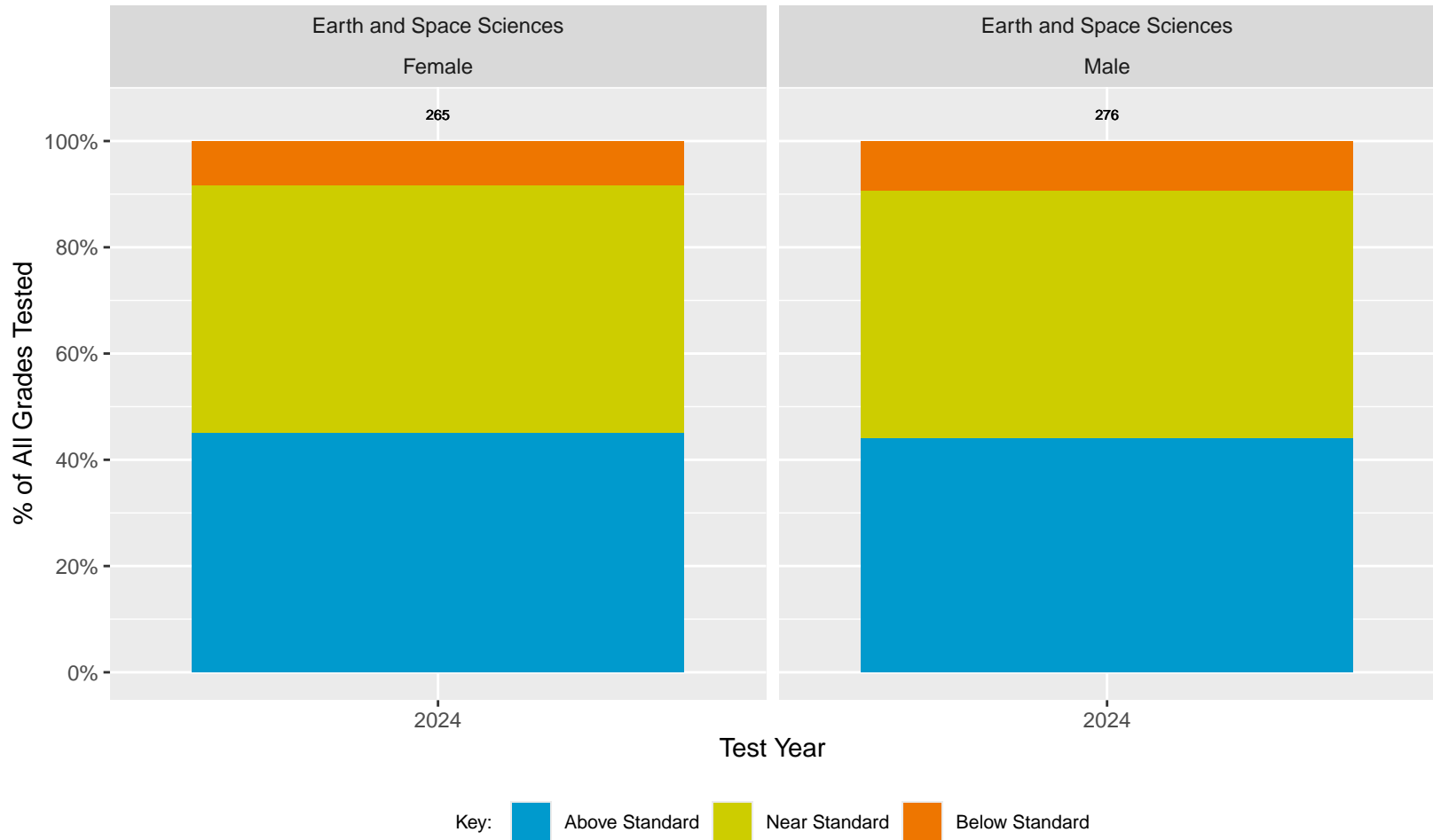


Key: ■ Above Standard ■ Near Standard ■ Below Standard

CA Science Test (CAST): Piedmont Unified School District (Sex)



CA Science Test (CAST): Piedmont Unified School District (Sex)



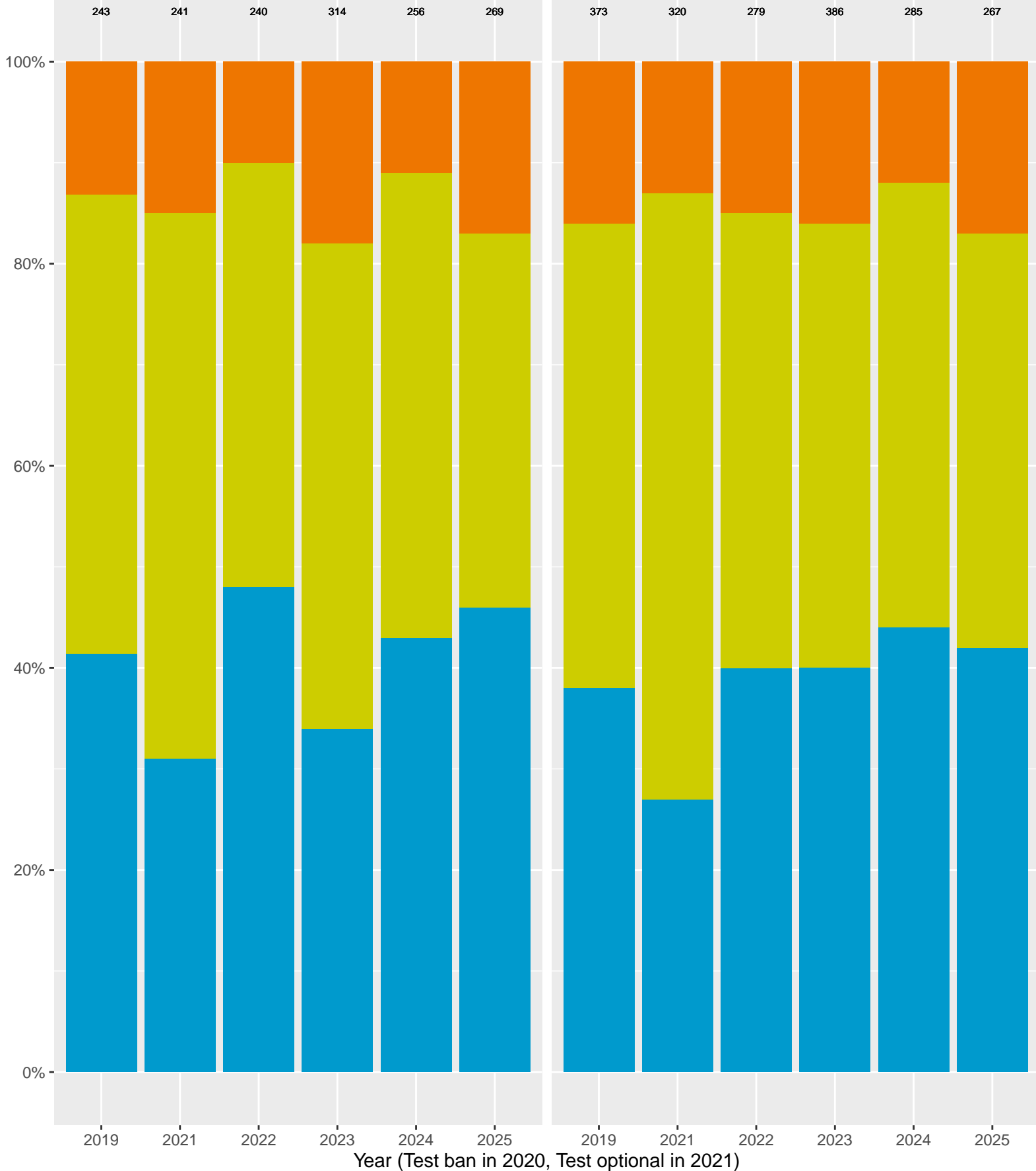
CA Science Test (CAST): Piedmont Unified School District by Non-White + White

Physical Sciences

Non-White

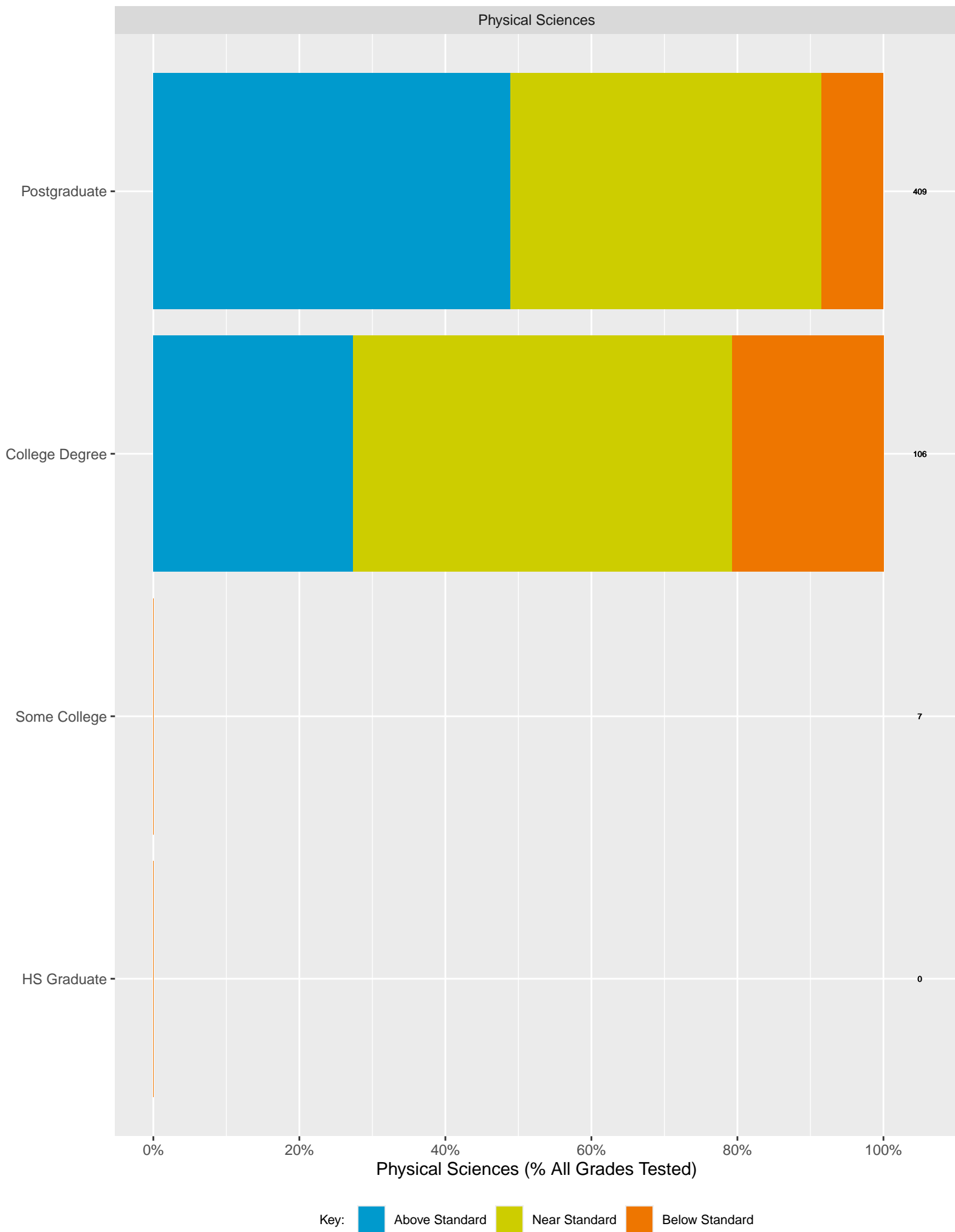
Physical Sciences

White



Key: Above Standard Near Standard Below Standard

Piedmont Unified School District CAST (2024) by Parent's Education Level



Parents for Educational Excellence in Piedmont

Analysis by: Hari Titan, Ph.D.

Email: ExcellencePUSD@gmail.com

CAASPP source data & validation: bit.ly/CAASPPComparison

Copyright 2024 Parents for Educational Excellence in Piedmont

Licensed under Creative Commons Attribution–NonCommercial–ShareAlike 4.0 International