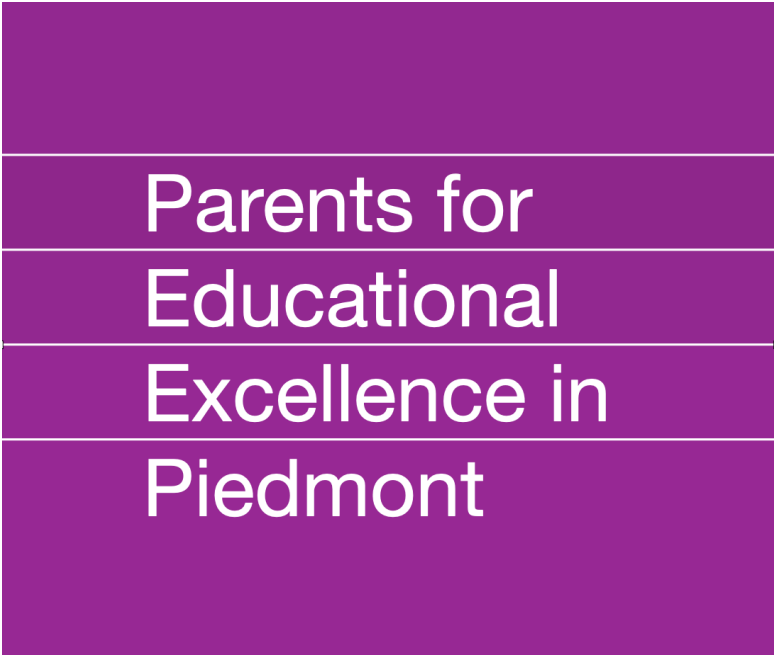


2015–24 CAASPP Trends for the Fremont Unified School District

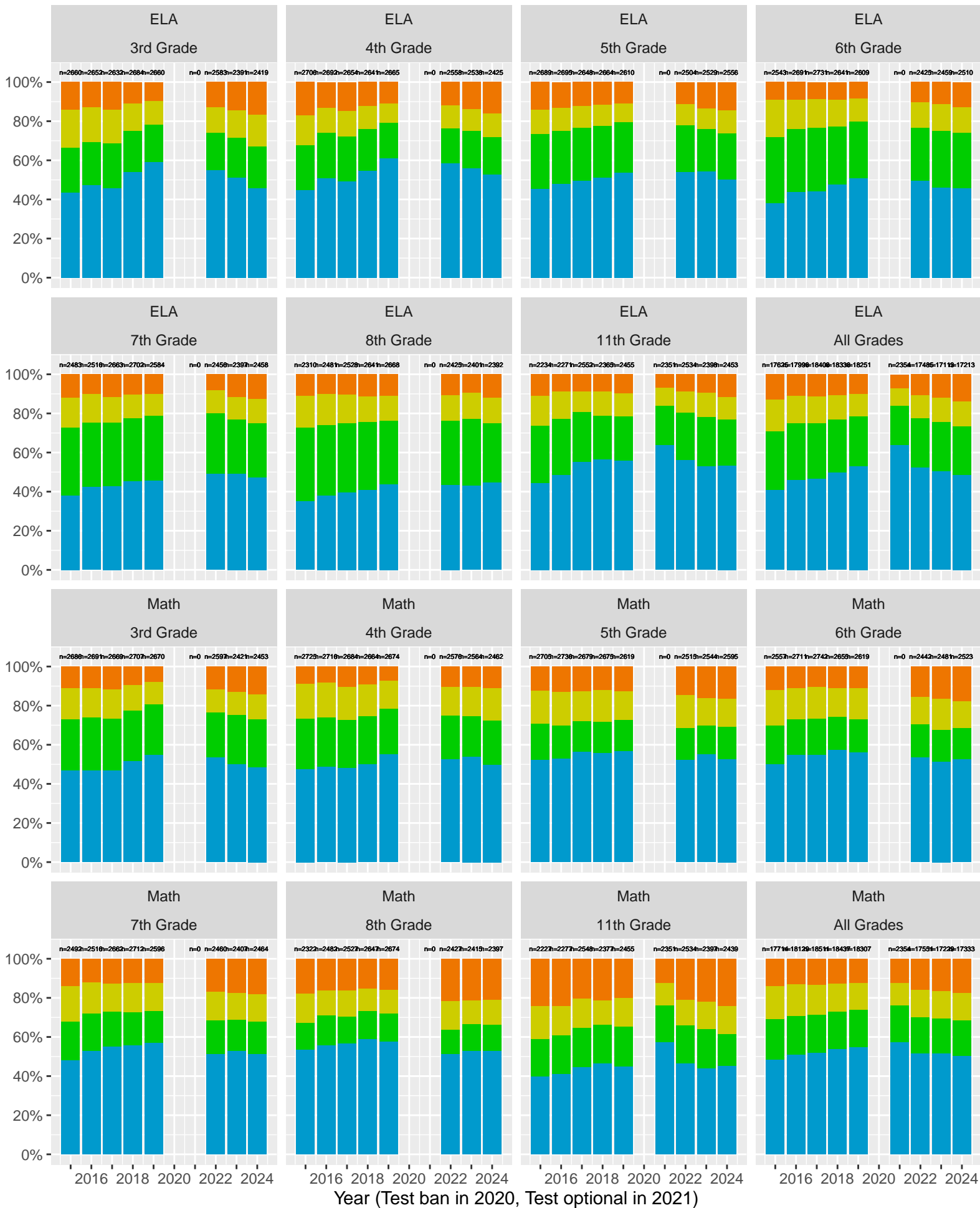
November 2024  
Piedmont, California



# TABLE OF CONTENTS

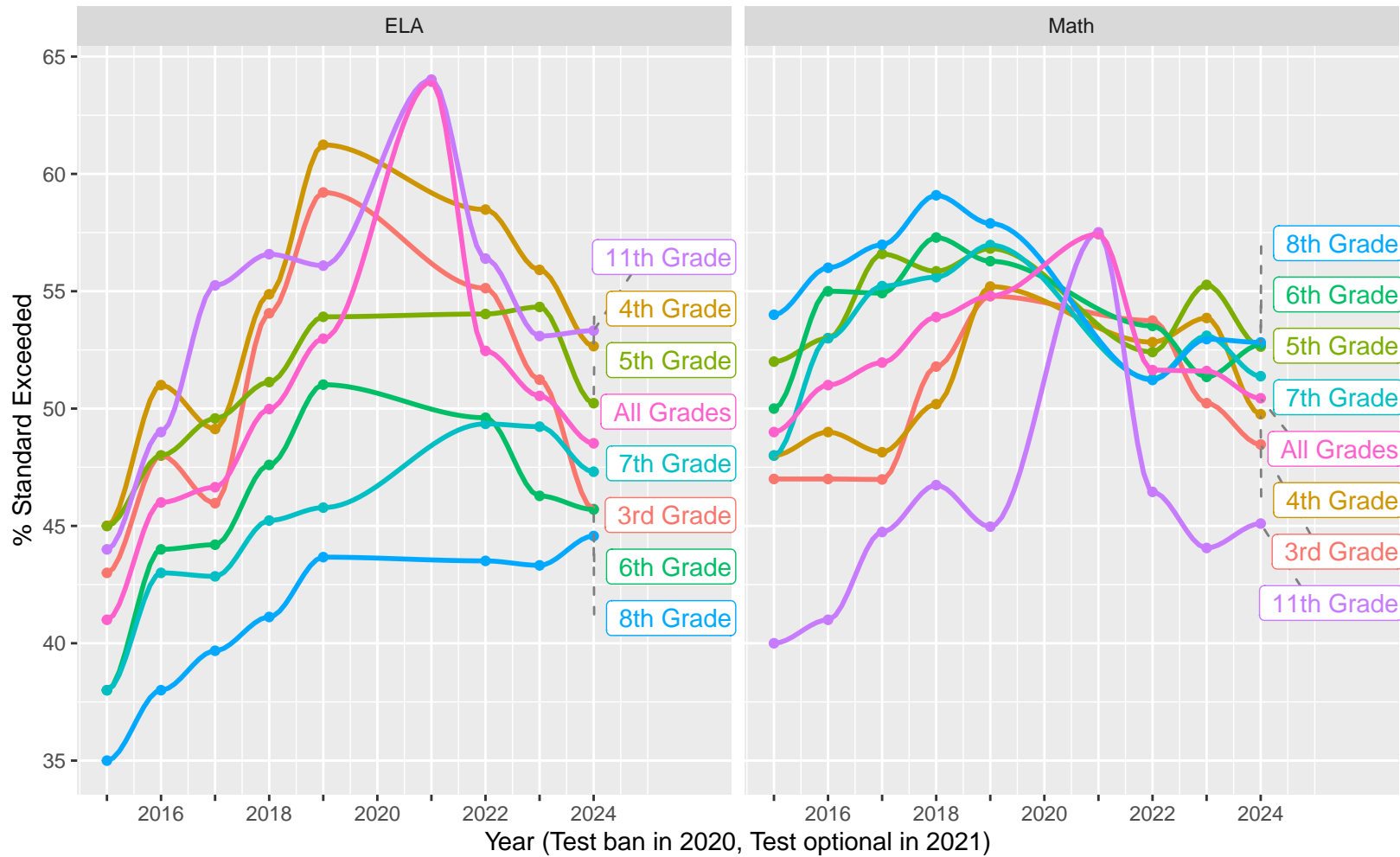
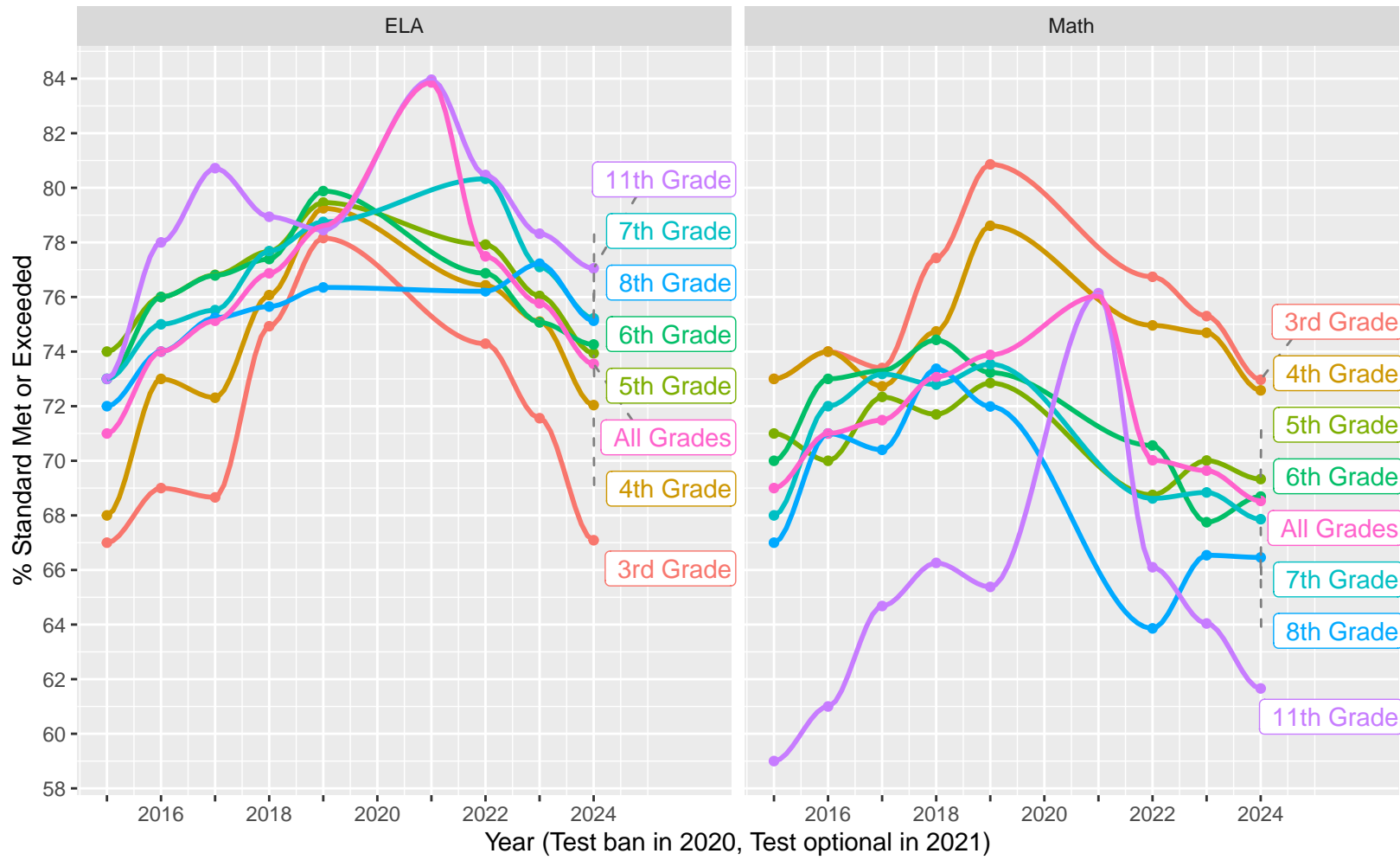
High Level ELA and Math, trending by Year and broken out by Grade.....	p 3
Year over Year (YoY) variation by Grade for Standard Met (and Exceeded).....	p 4
ELA and Math drilldown to Subject Areas 1–4, by Year, by Grade.....	p 5–8
Racial Distribution of Students in 2024.....	p 9
All Grade ELA and Math by Sex, (Non–)White, Disadvantage, Parent Ed.....	p 10–13
CAST Life Sciences, Physical Science, Earth and Space Science.....	p 14–16
CAST Life Sciences, Earth and Space by Sex.....	p 17
CAST Physical Science by (Non–)White, Parent Education.....	p 18–19

# CAASPP Test Performance: Fremont Unified School District

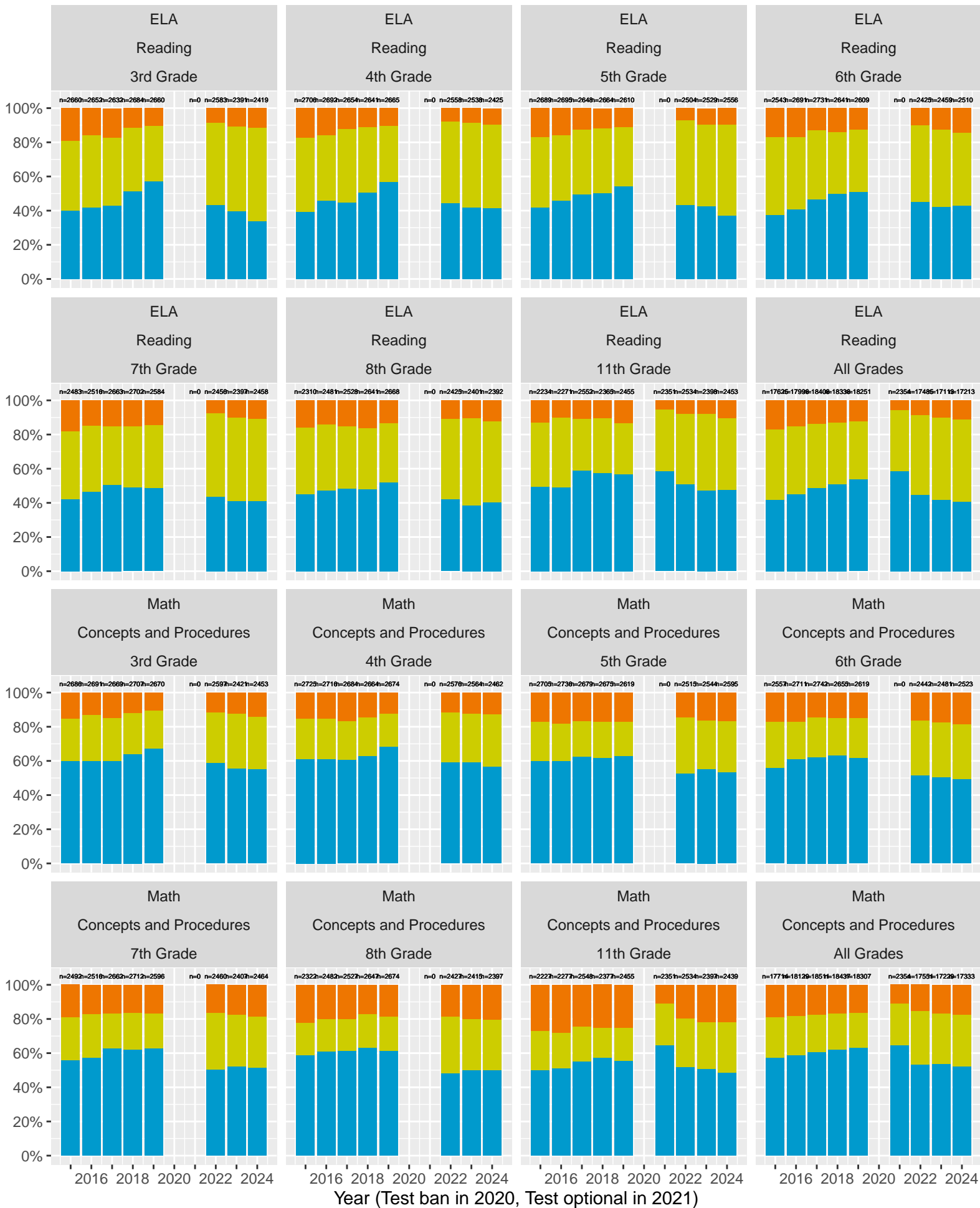


Key: Standard Exceeded Standard Met Standard Nearly Met Standard Not Met

### Grades stacked (trends, variance, outliers)

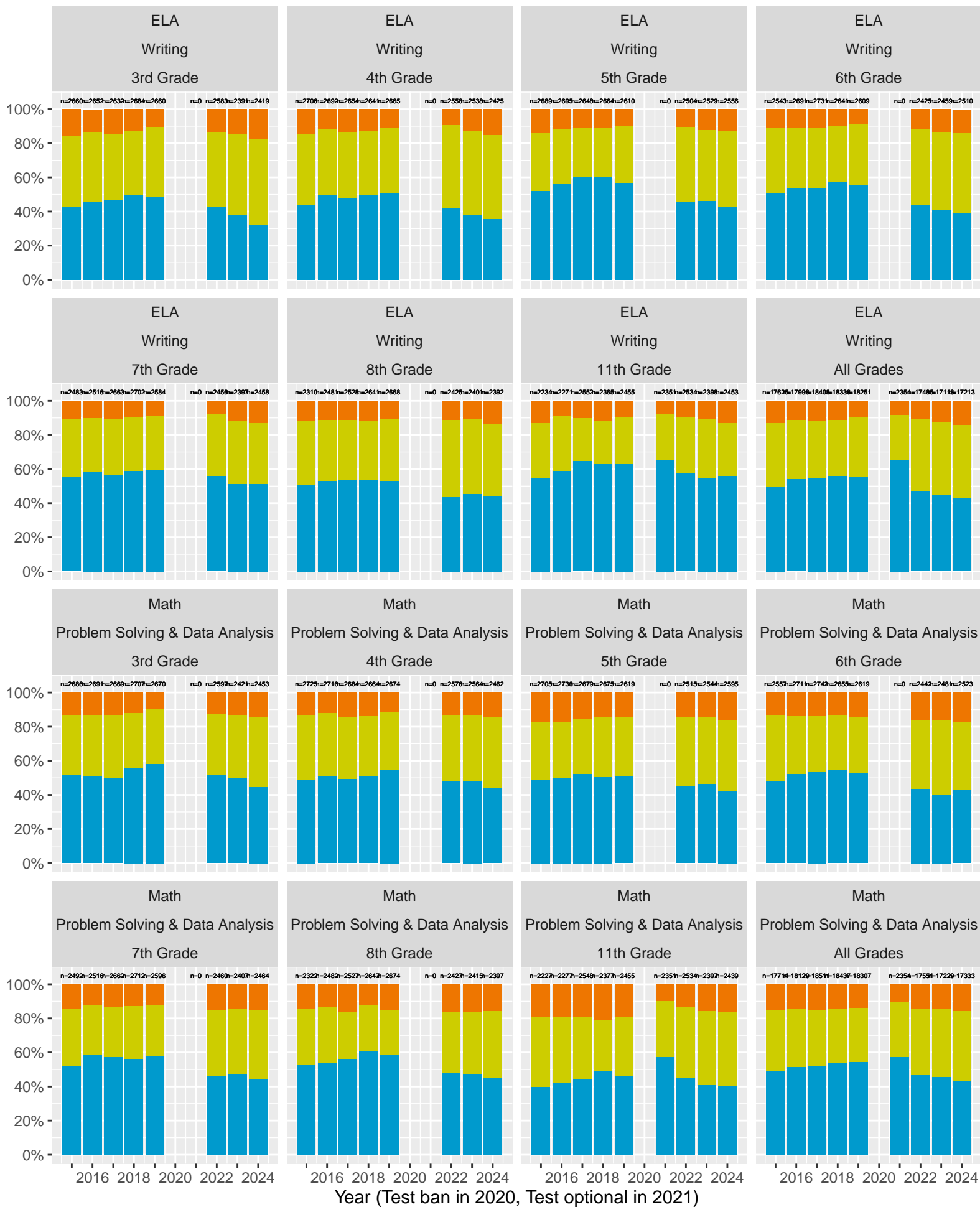


# Fremont Unified School District (Subject Area 1)



Key: ■ Above Standard ■ Near Standard ■ Below Standard

# Fremont Unified School District (Subject Area 2)



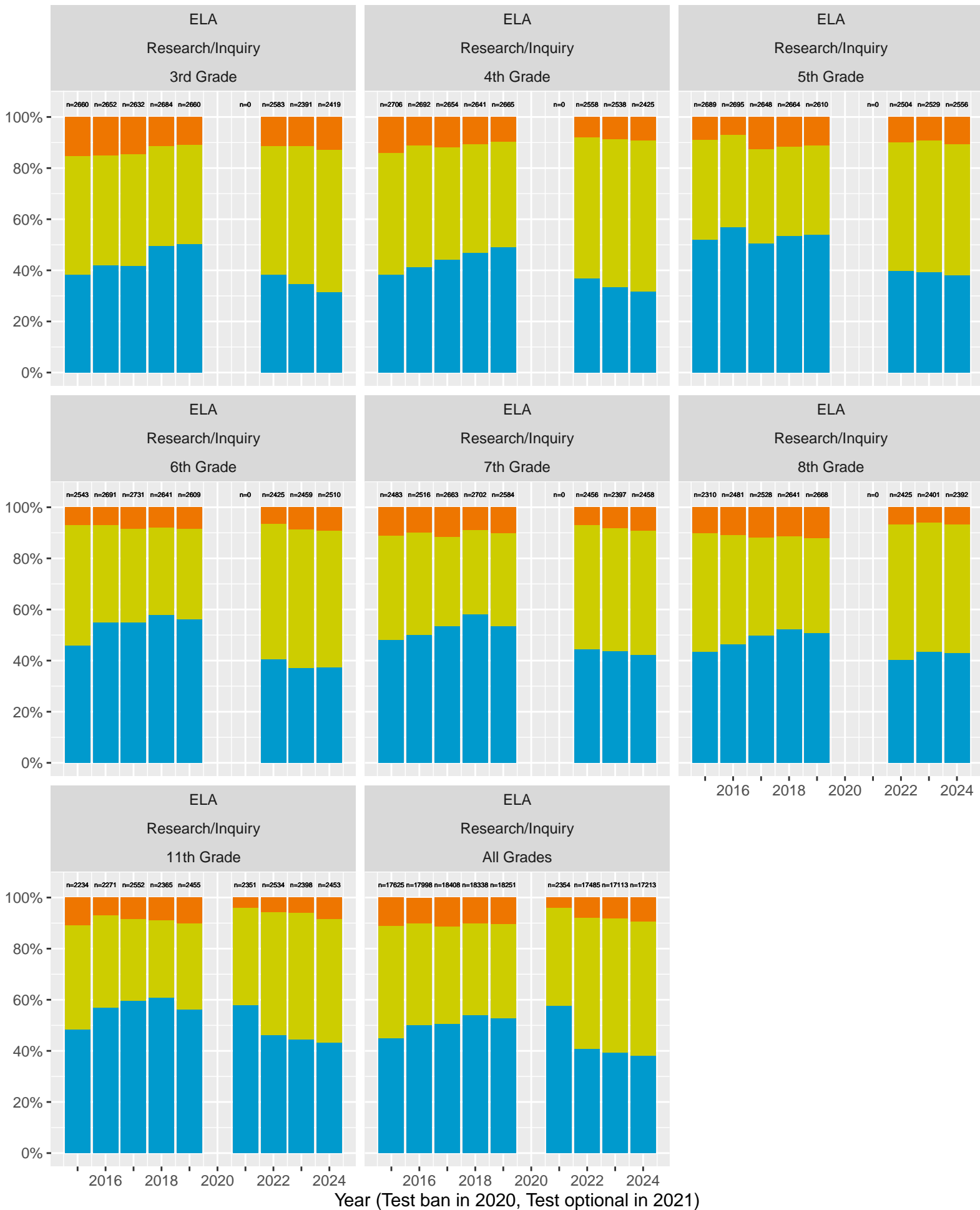
Key: ■ Above Standard ■ Near Standard ■ Below Standard

# Fremont Unified School District (Subject Area 3)



Key: ■ Above Standard ■ Near Standard ■ Below Standard

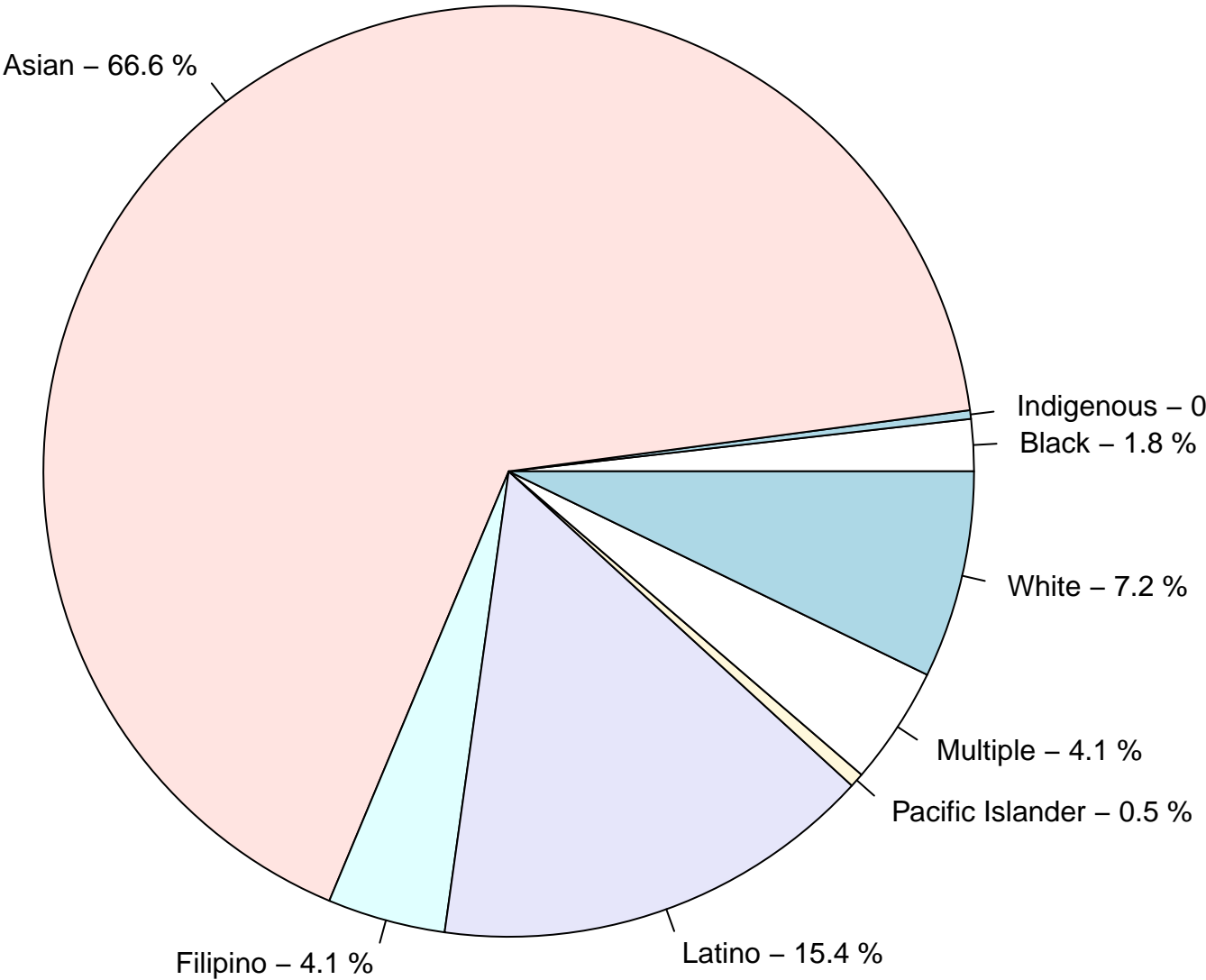
# Fremont Unified School District (Subject Area 4)



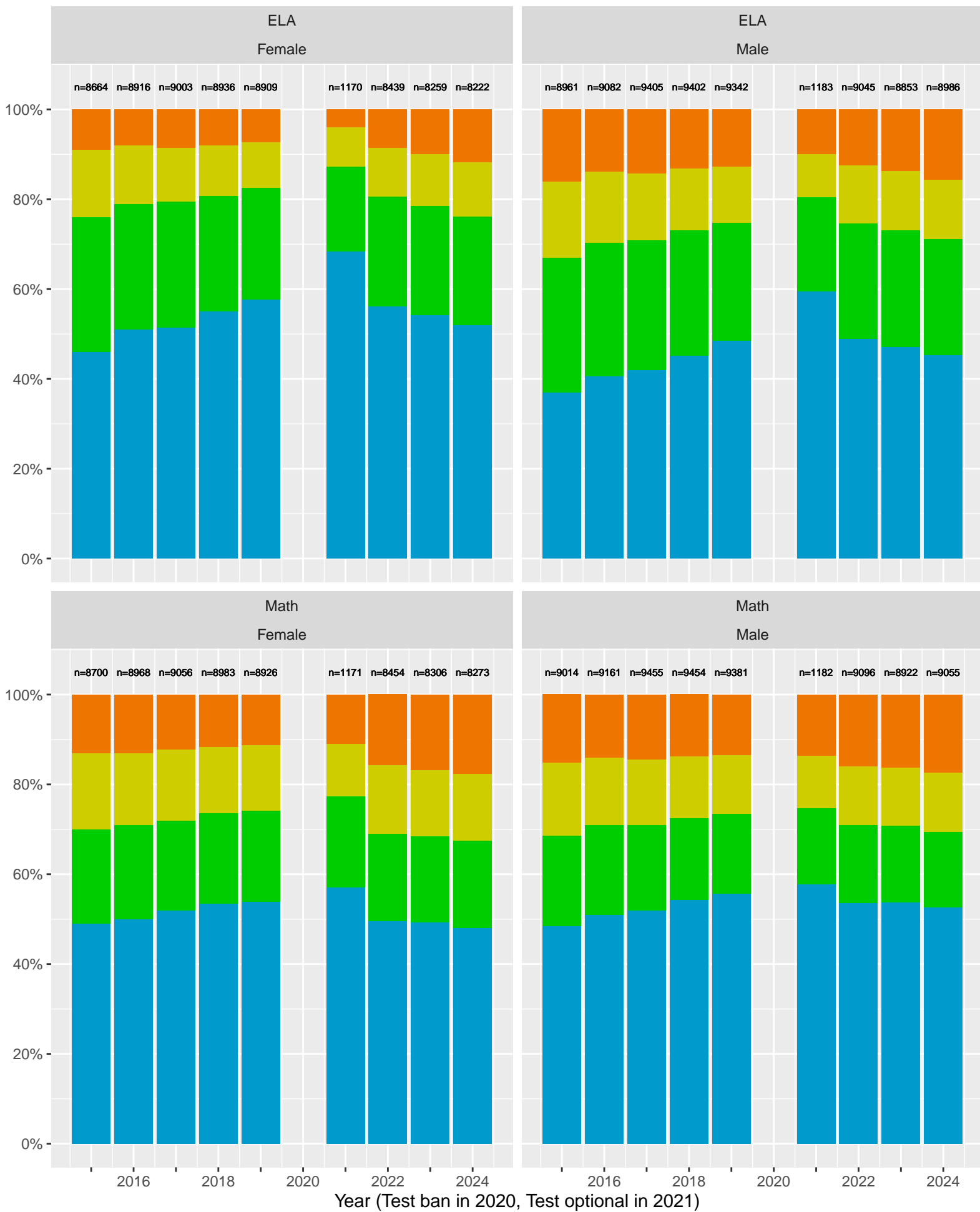
Key: ■ Above Standard ■ Near Standard ■ Below Standard



**Racial distribution of Fremont Unified School District students tested in 2024**

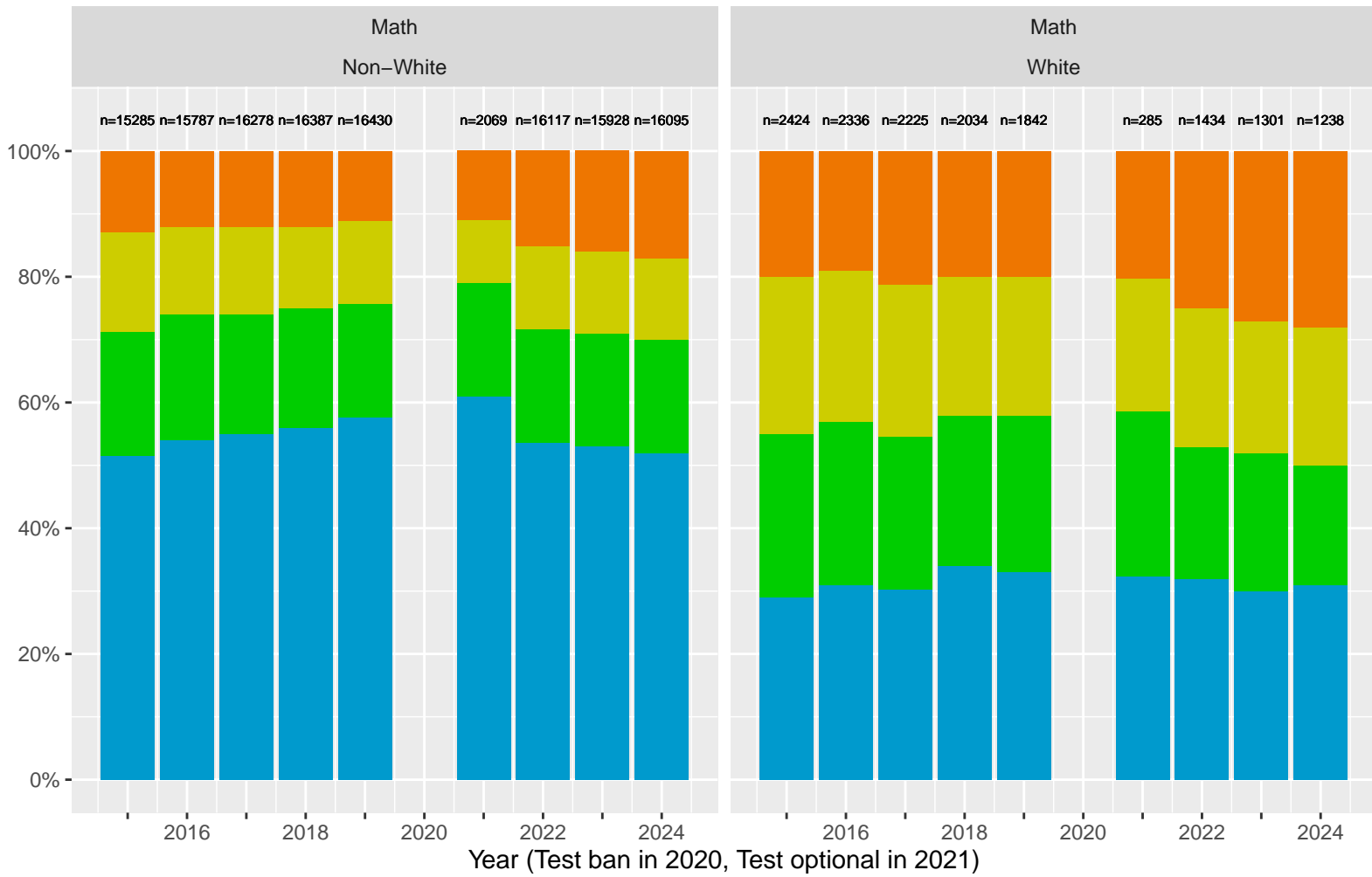
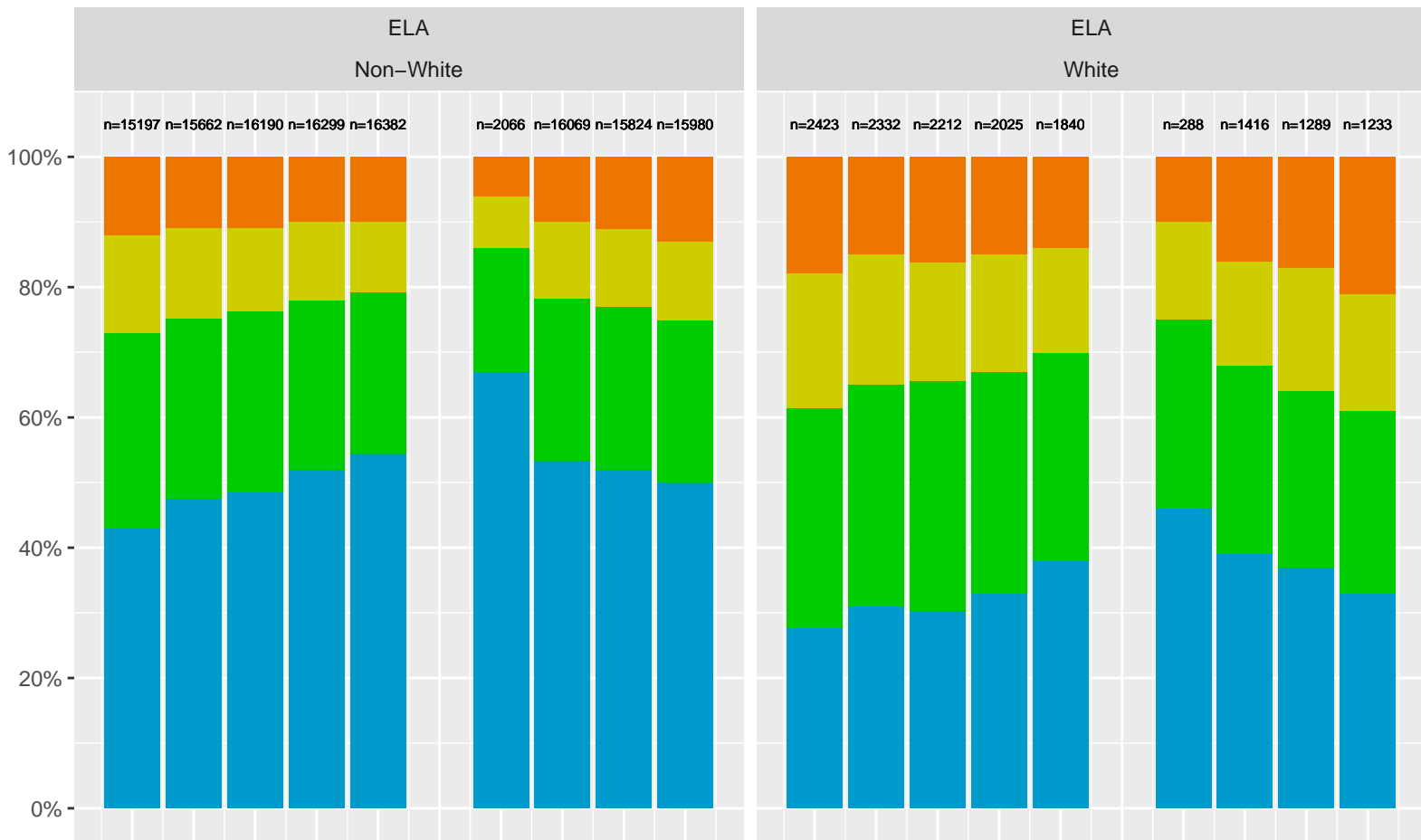


# Fremont Unified School District by Sex



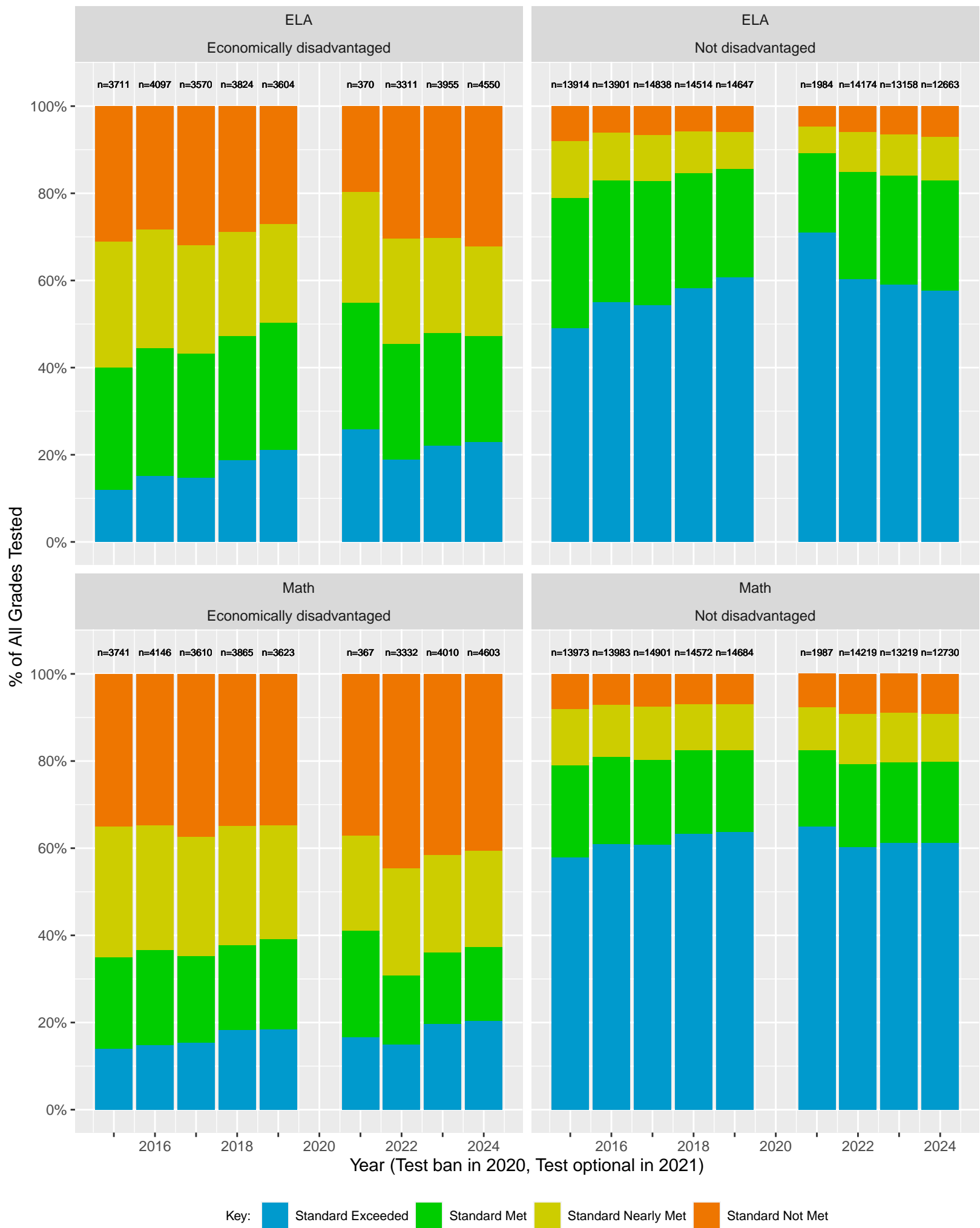
Key: ■ Standard Exceeded ■ Standard Met ■ Standard Nearly Met ■ Standard Not Met

# Fremont Unified School District by Non-White + White



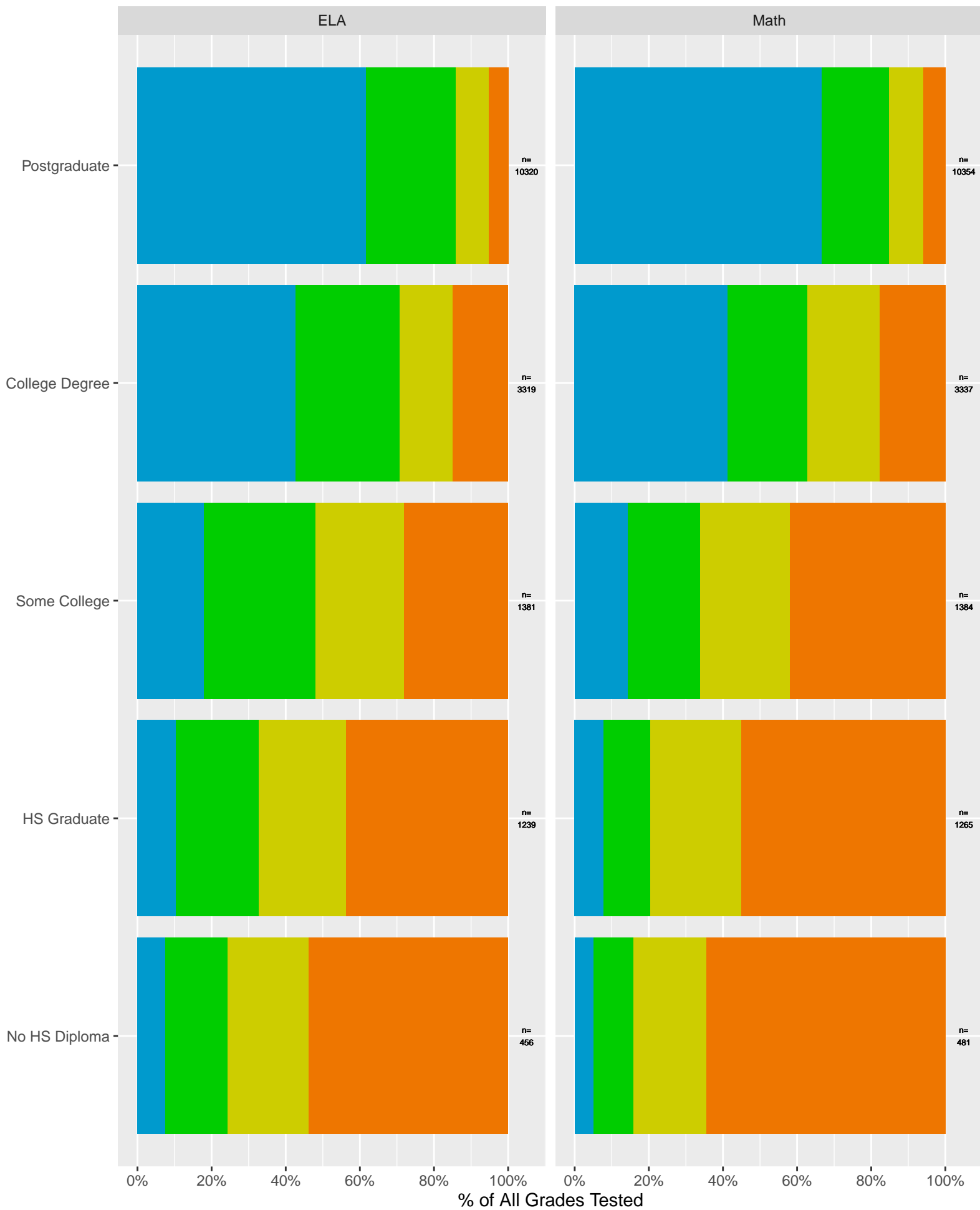
Key: ■ Standard Exceeded ■ Standard Met ■ Standard Nearly Met ■ Standard Not Met

# Fremont Unified School District by Economic Disadvantage



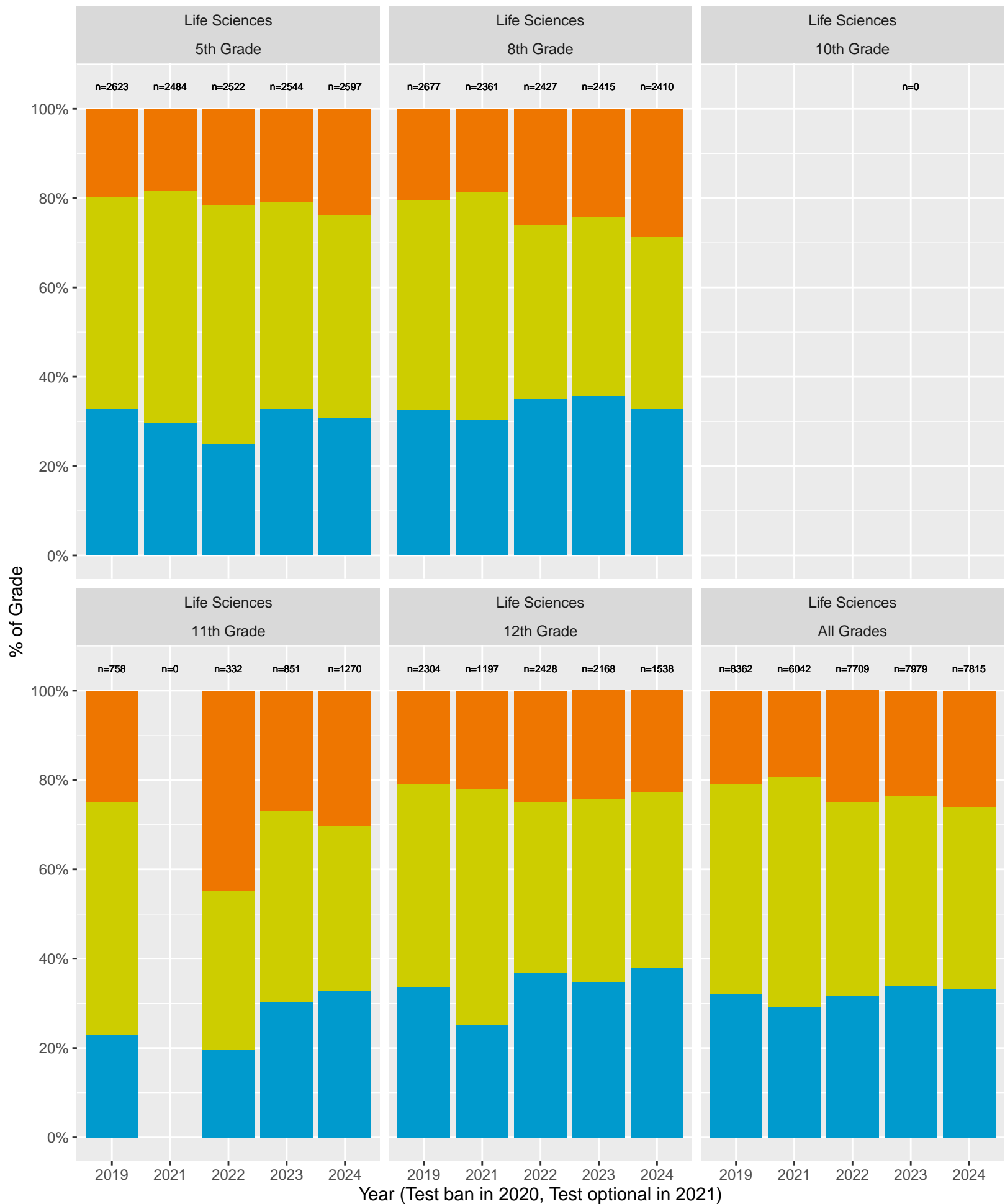
Key: ■ Standard Exceeded ■ Standard Met ■ Standard Nearly Met ■ Standard Not Met

# Fremont Unified School District (2024) by Parent's Education Level



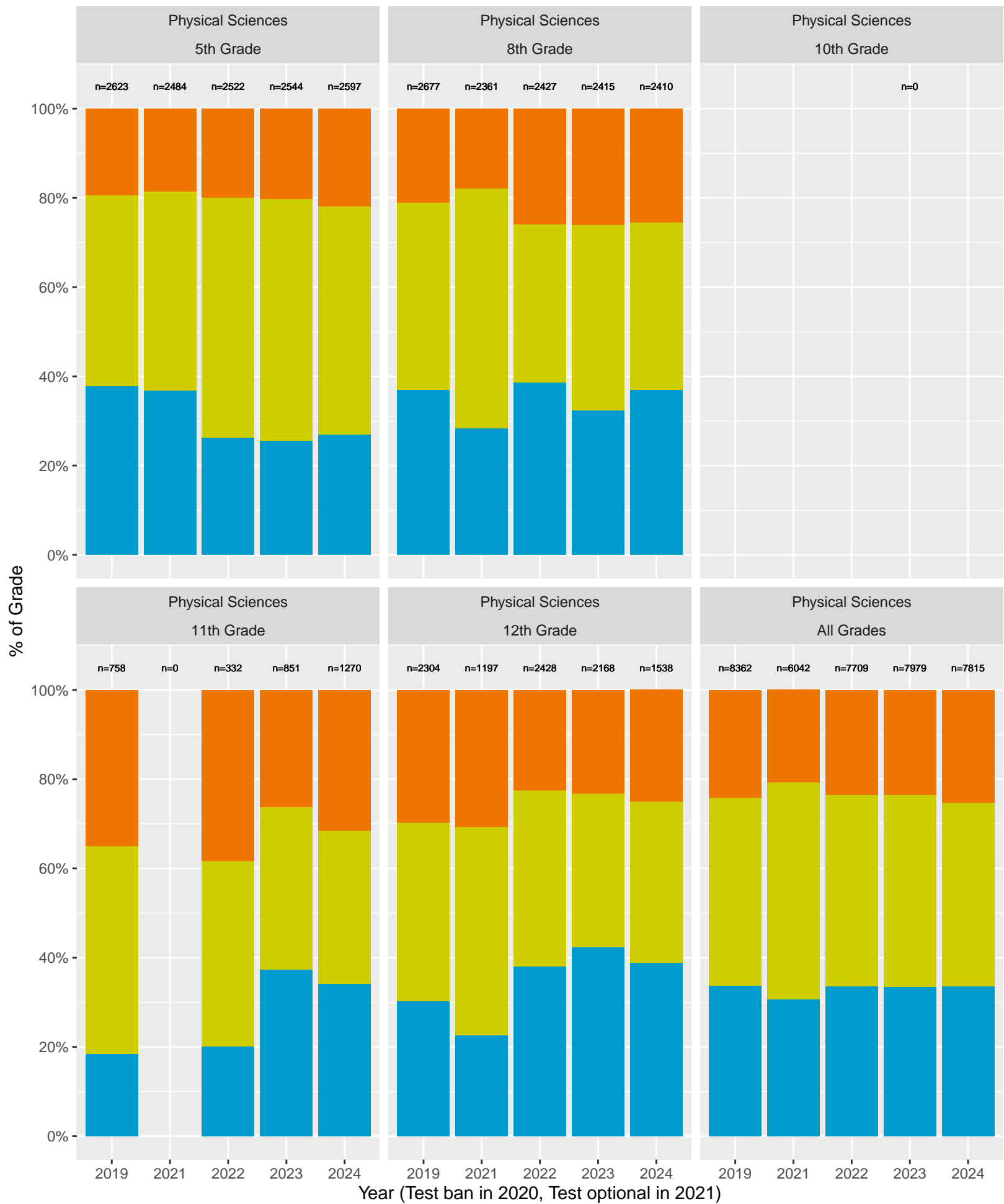
Key: ■ Standard Exceeded ■ Standard Met ■ Standard Nearly Met ■ Standard Not Met

# CA Science Test (CAST): Fremont Unified School District (Life Sciences)



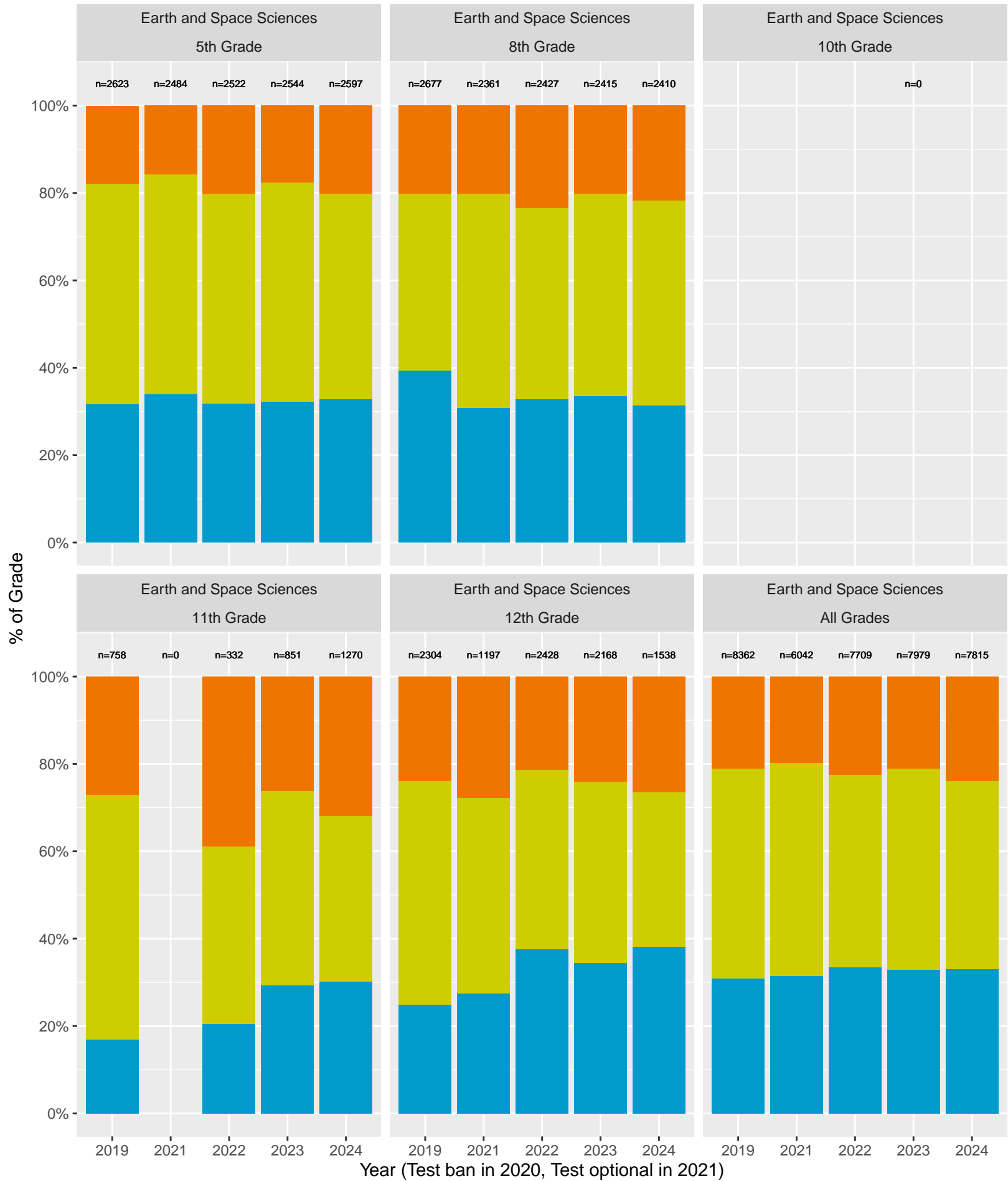
Key: ■ Above Standard ■ Near Standard ■ Below Standard

# CA Science Test (CAST): Fremont Unified School District (Physical Sciences)



Key: ■ Above Standard ■ Near Standard ■ Below Standard

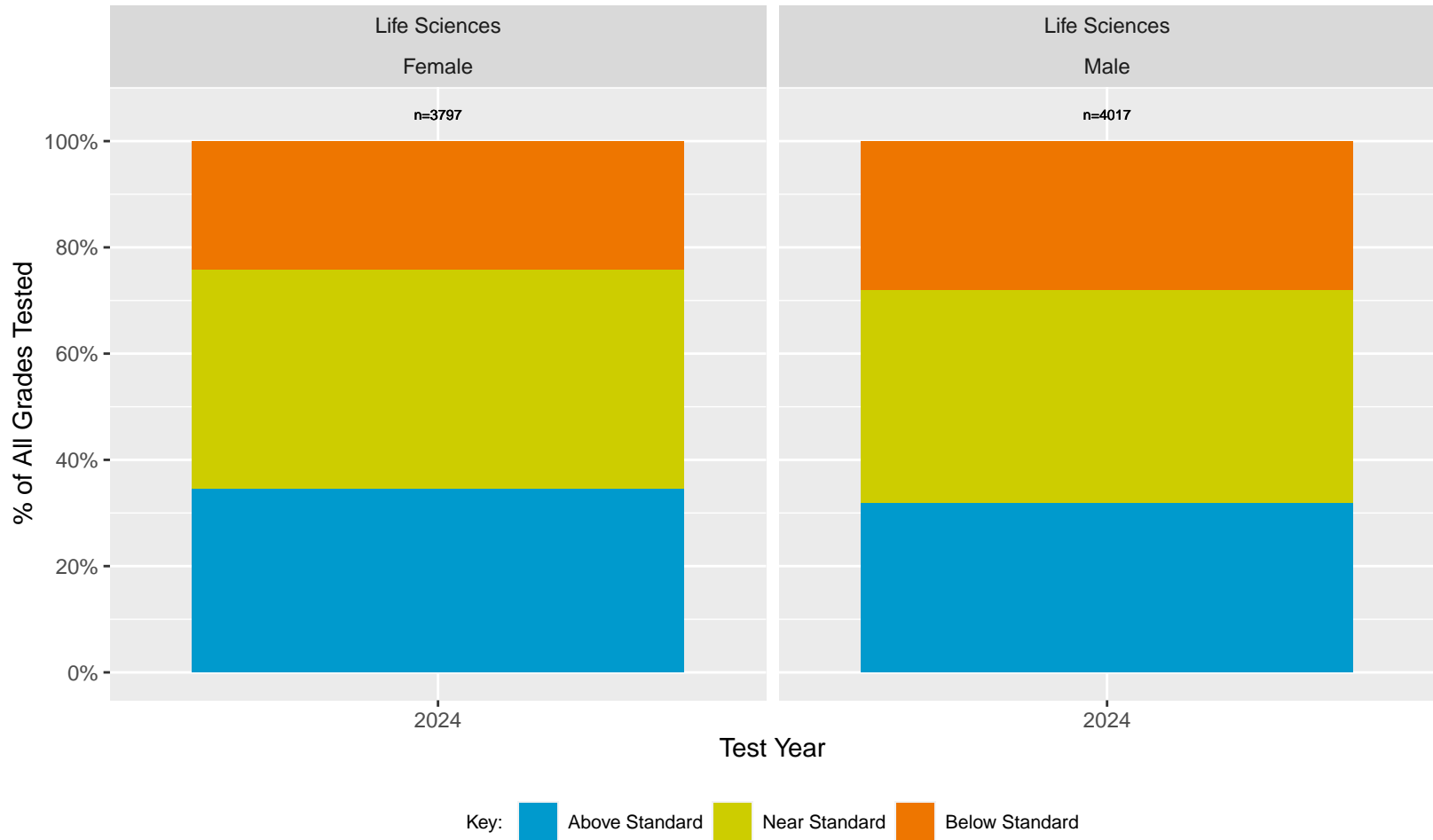
# CA Science Test (CAST): Fremont Unified School District (Earth and Space Sciences)



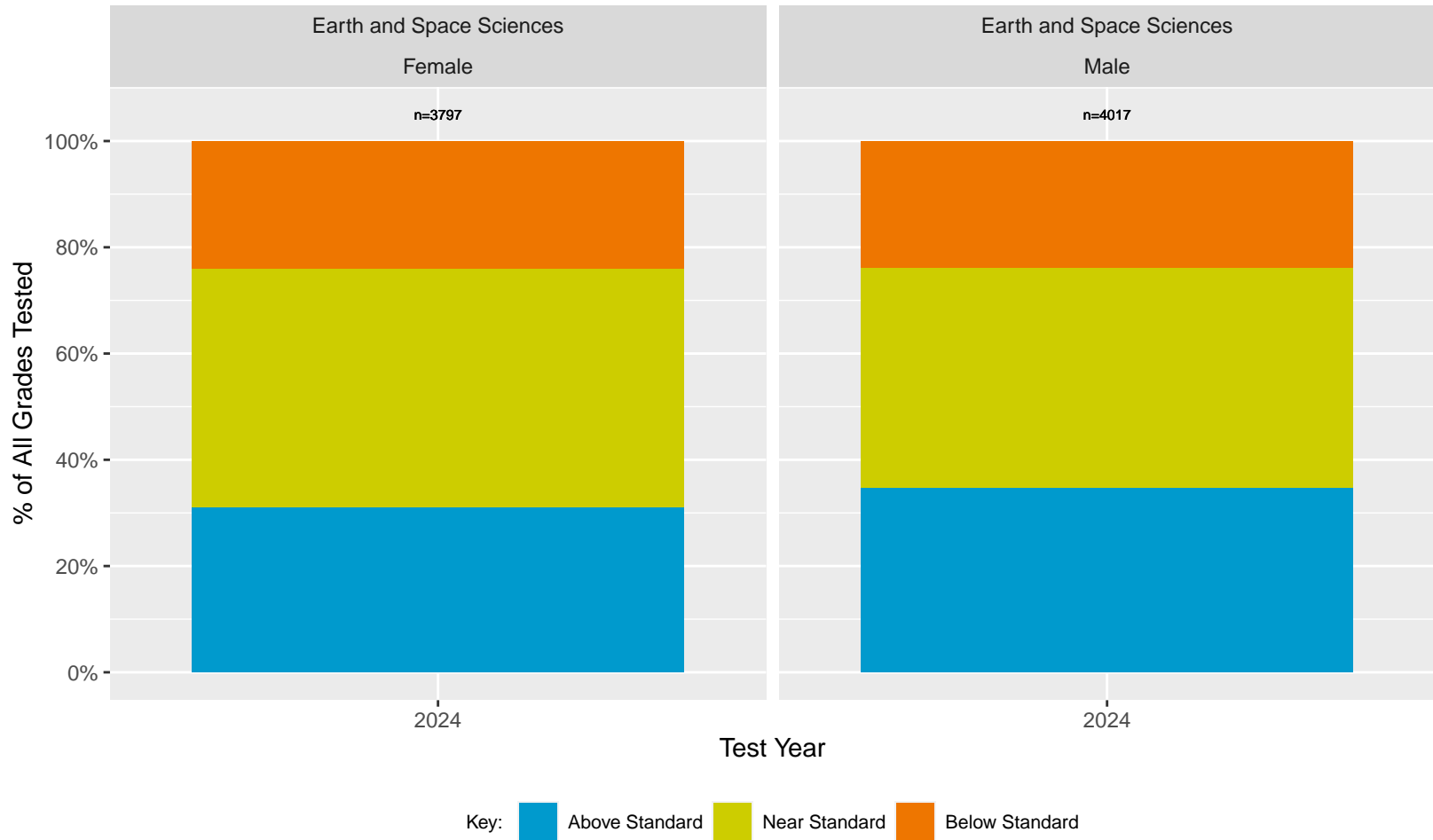
Key: ■ Above Standard ■ Near Standard ■ Below Standard



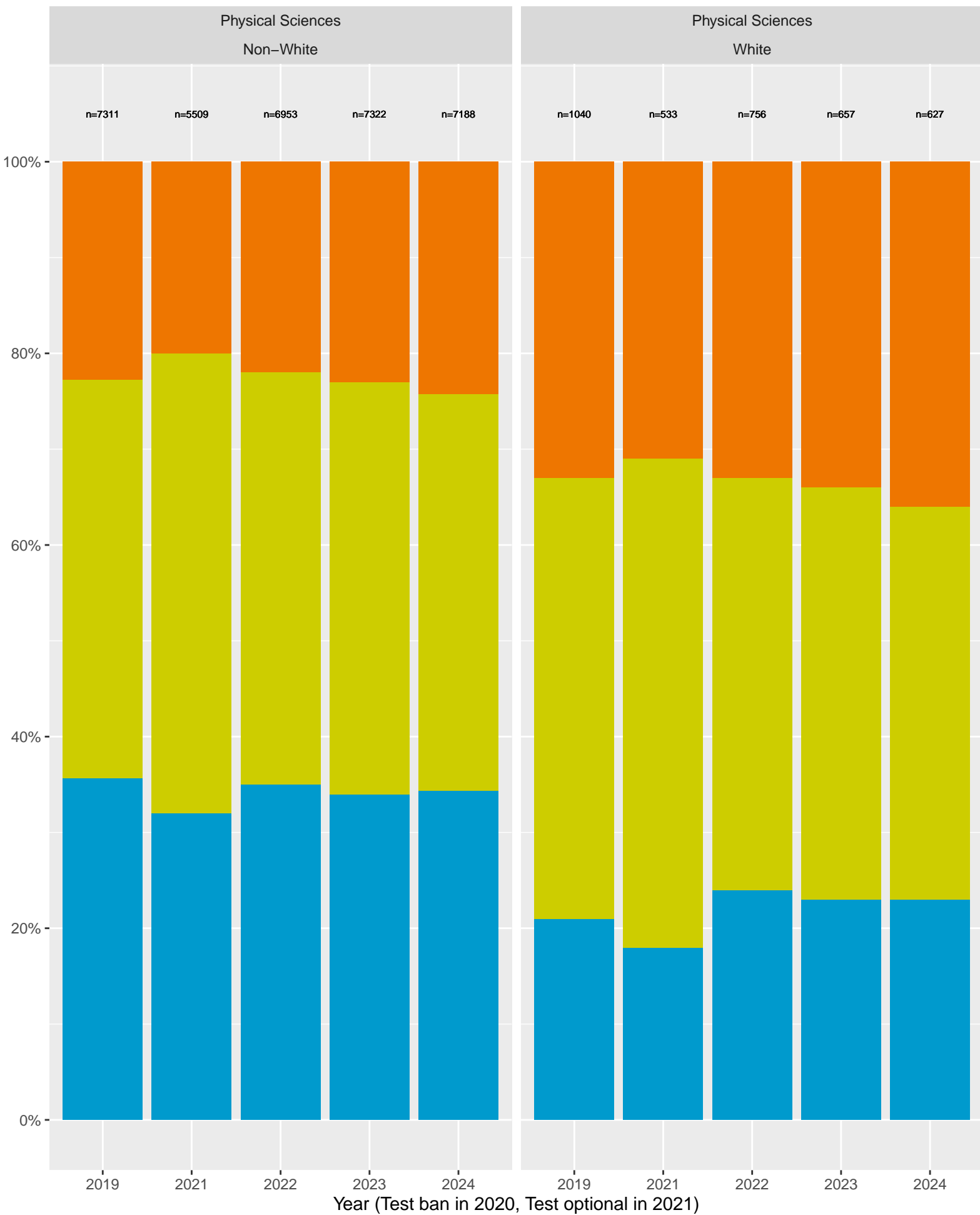
### CA Science Test (CAST): Fremont Unified School District (Sex)



### CA Science Test (CAST): Fremont Unified School District (Sex)

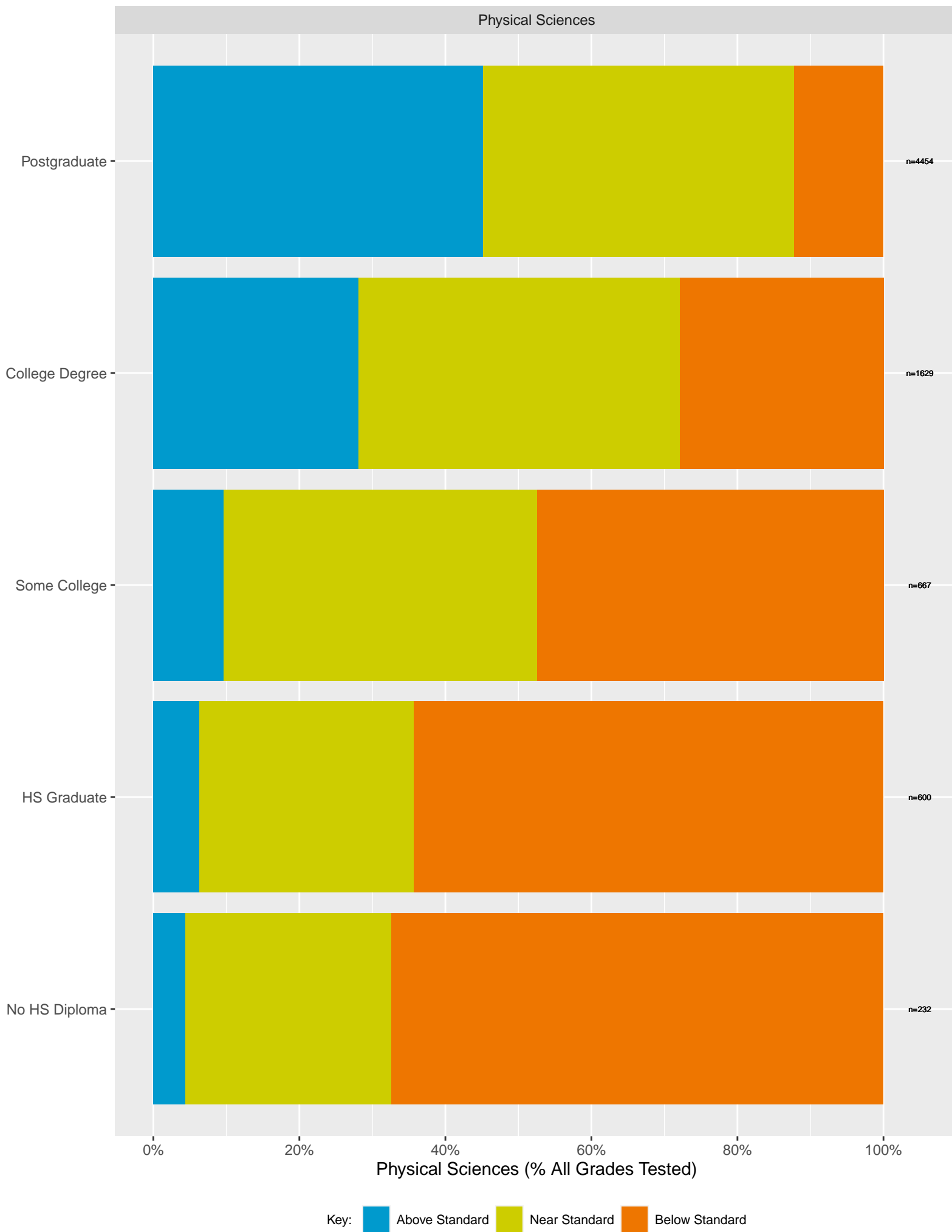


# CA Science Test (CAST): Fremont Unified School District by Non-White + White



Key: ■ Above Standard ■ Near Standard ■ Below Standard

# Fremont Unified School District CAST (2024) by Parent's Education Level



# Parents for Educational Excellence in Piedmont

Analysis by: Hari Titan, Ph.D.

Email: [ExcellencePUSD@gmail.com](mailto:ExcellencePUSD@gmail.com)

CAASPP source data & validation: [bit.ly/CAASPPComparison](https://bit.ly/CAASPPComparison)

Copyright 2024 Parents for Educational Excellence in Piedmont

Licensed under Creative Commons Attribution–NonCommercial–ShareAlike 4.0 International