

2015–25 CAASPP Trends for the Albany Unified School District

Feb 2026
Piedmont, California



TABLE OF CONTENTS

High Level ELA and Math, trending by Year and broken out by Grade.....p 3

Year over Year (YoY) variation by Grade for Standard Met (and Exceeded).....p 4

ELA and Math drilldown to Subject Areas 1–4, by Year, by Grade.....p 5–8

Racial Distribution of Students in 2024.....p 9

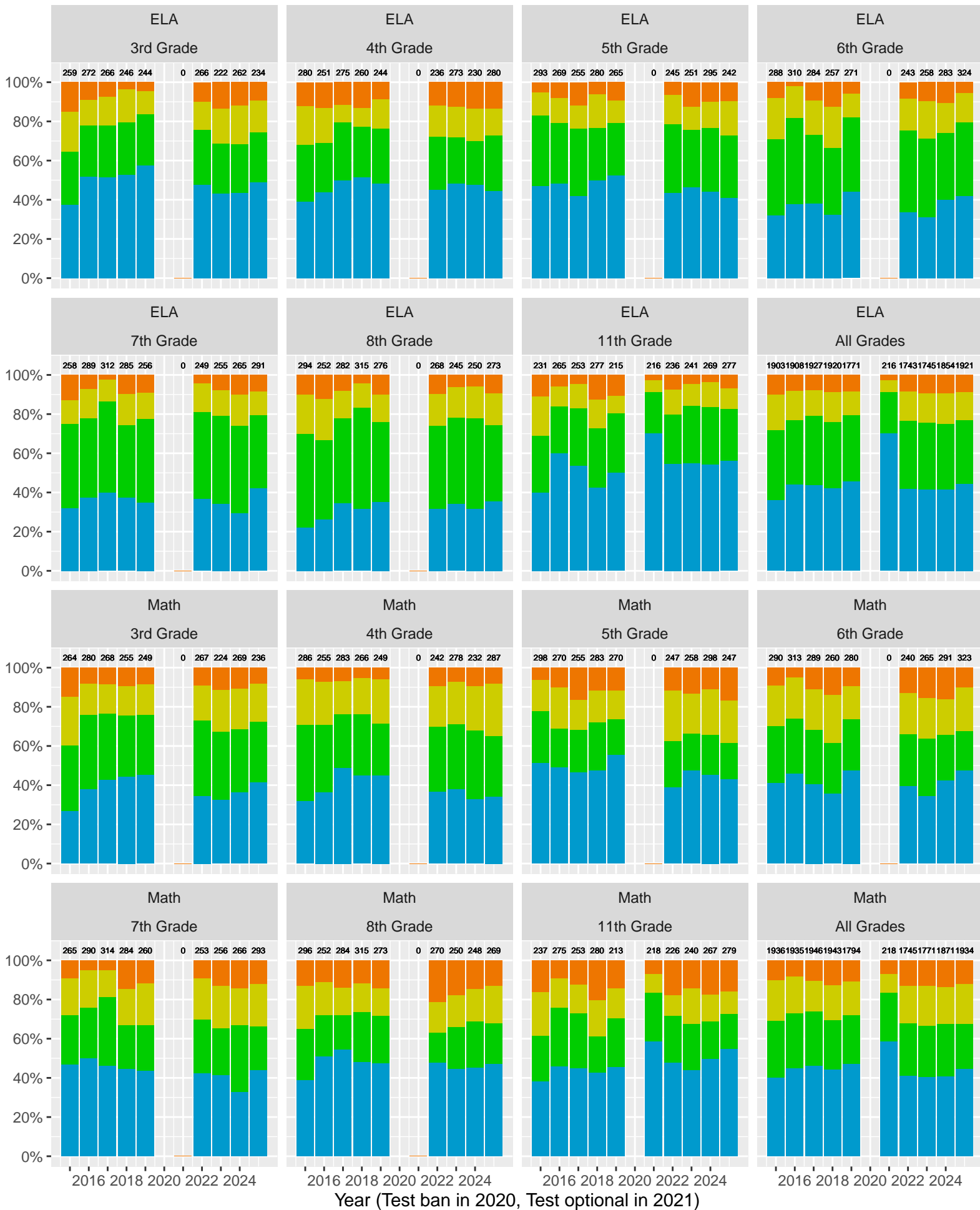
All Grade ELA and Math by Sex, (Non–)White, Disadvantage, Parent Ed.....p 10–13

CAST Life Sciences, Physical Science, Earth and Space Science.....p 14–16

CAST Life Sciences, Earth and Space by Sex.....p 17

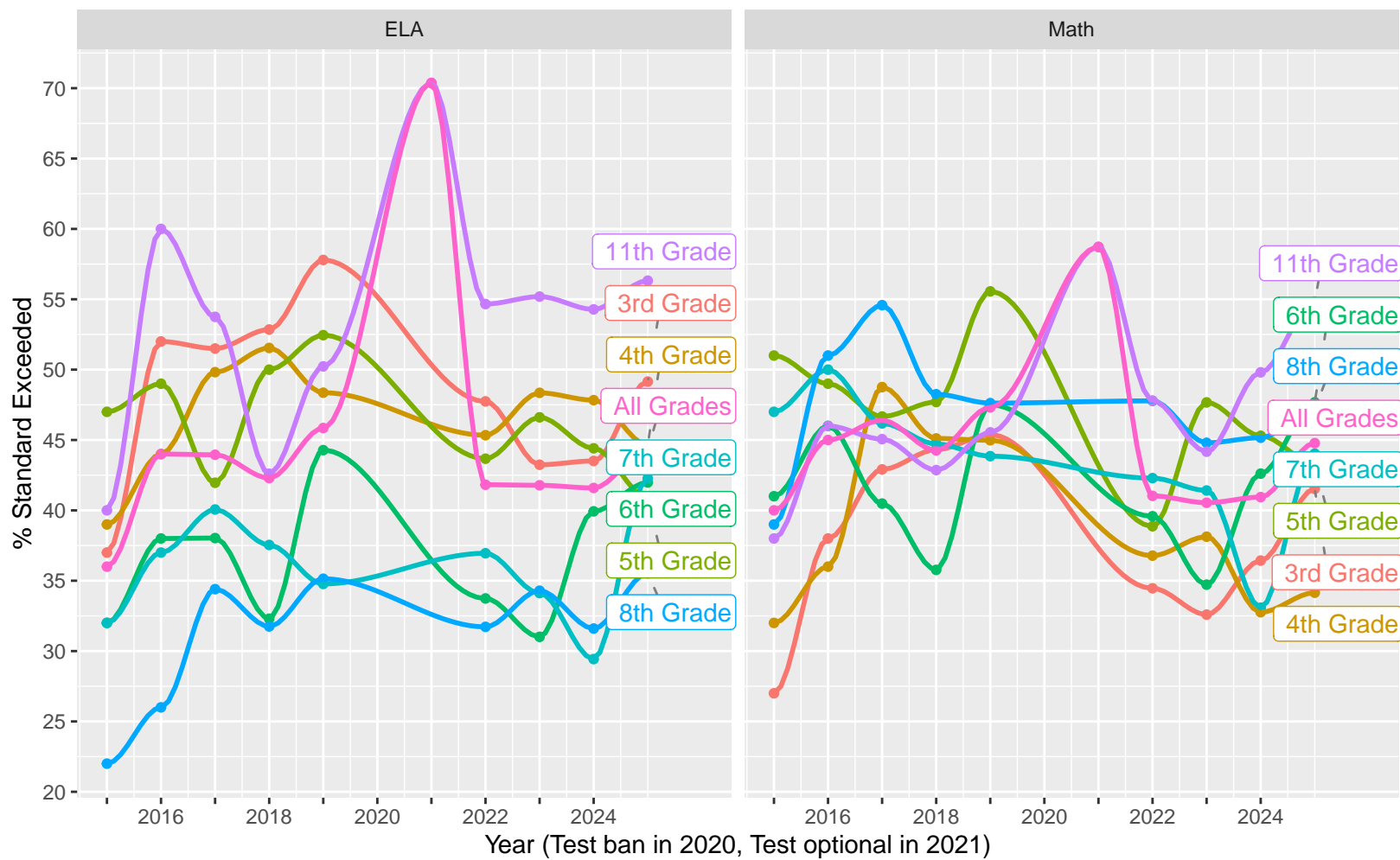
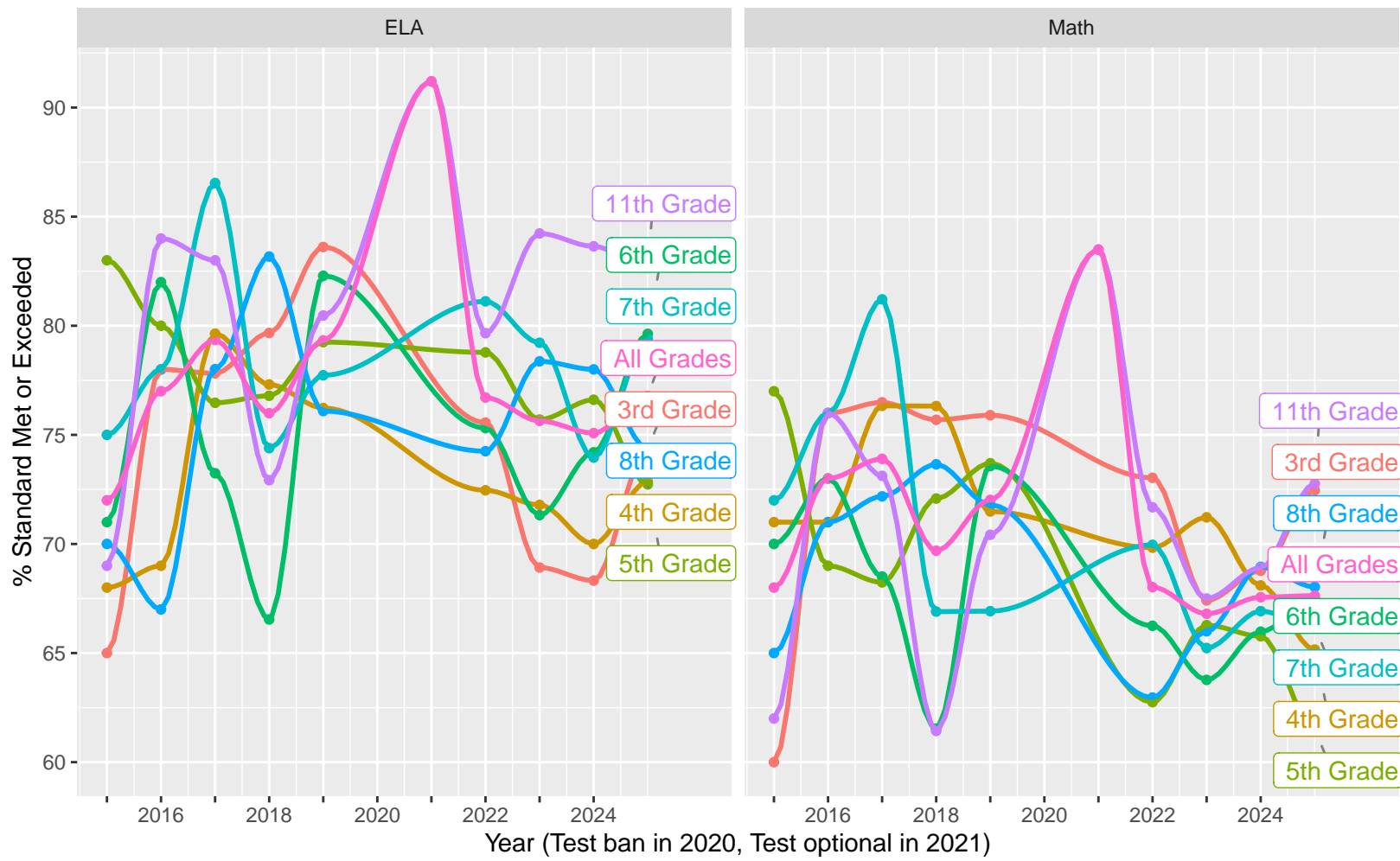
CAST Physical Science by (Non–)White, Parent Education.....p 18–19

CAASPP Test Performance: Albany Unified School District

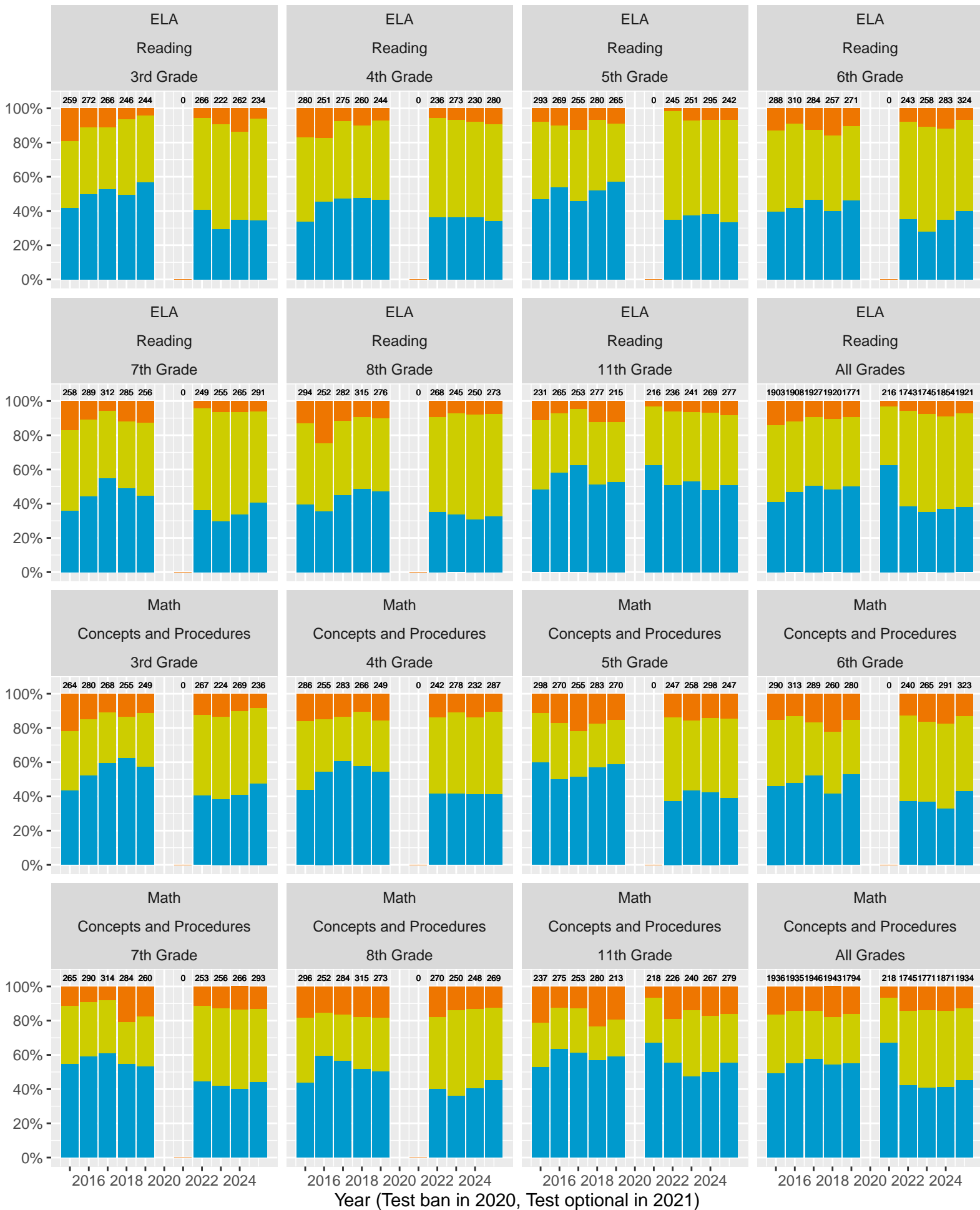


Key: ■ Standard Exceeded ■ Standard Met ■ Standard Nearly Met ■ Standard Not Met

Grades stacked (trends, variance, outliers)

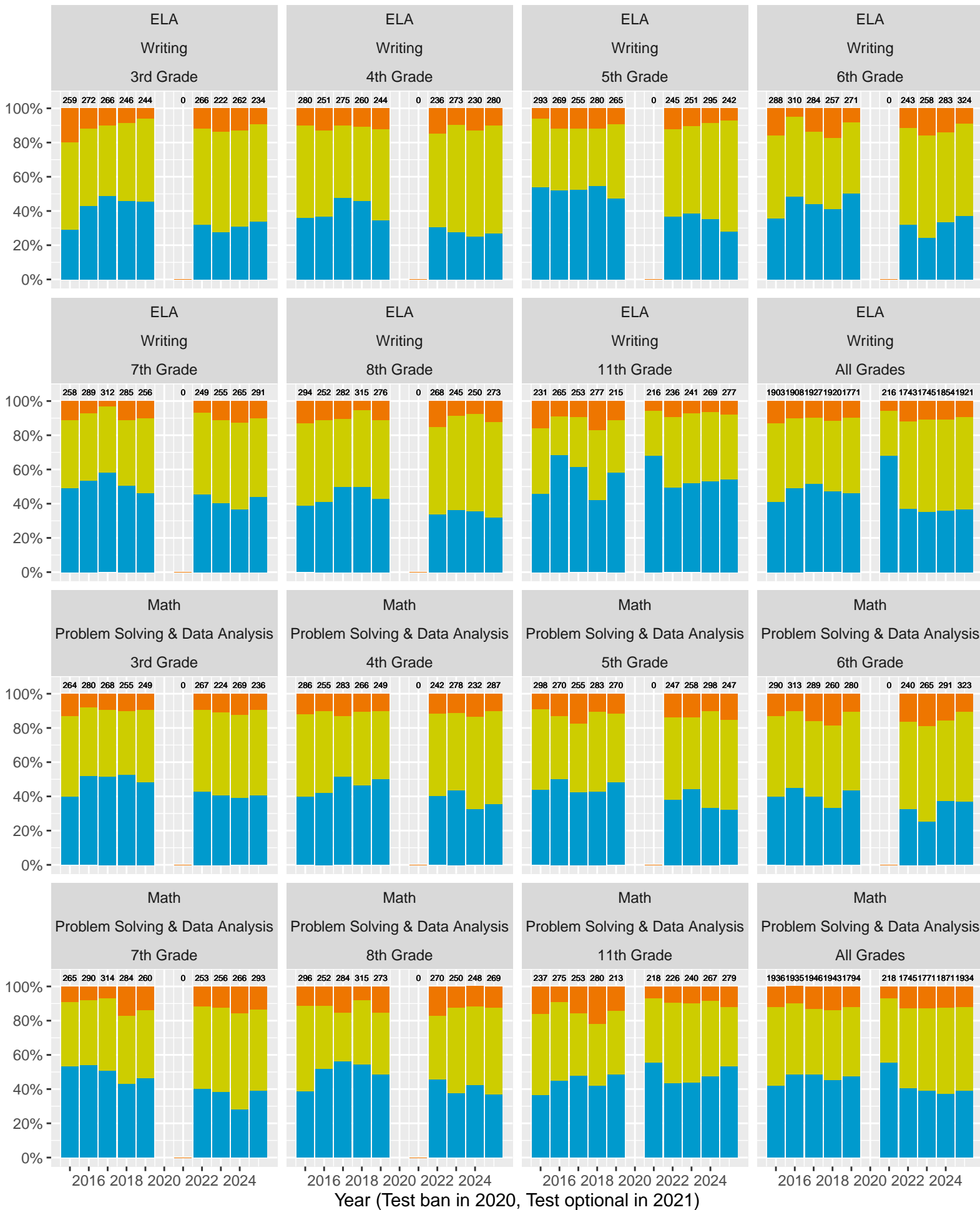


Albany Unified School District (Subject Area 1)



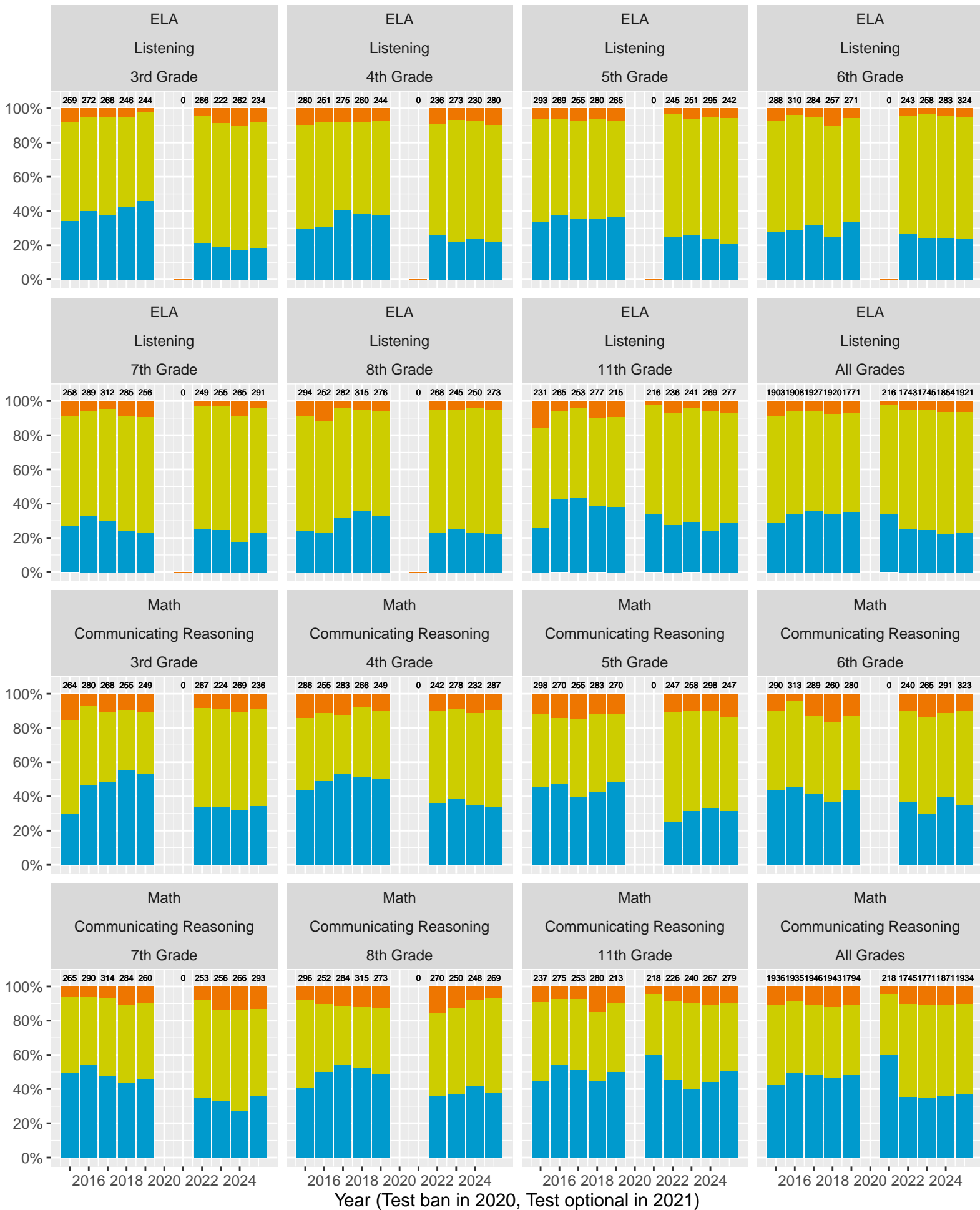
Key: ■ Above Standard ■ Near Standard ■ Below Standard

Albany Unified School District (Subject Area 2)



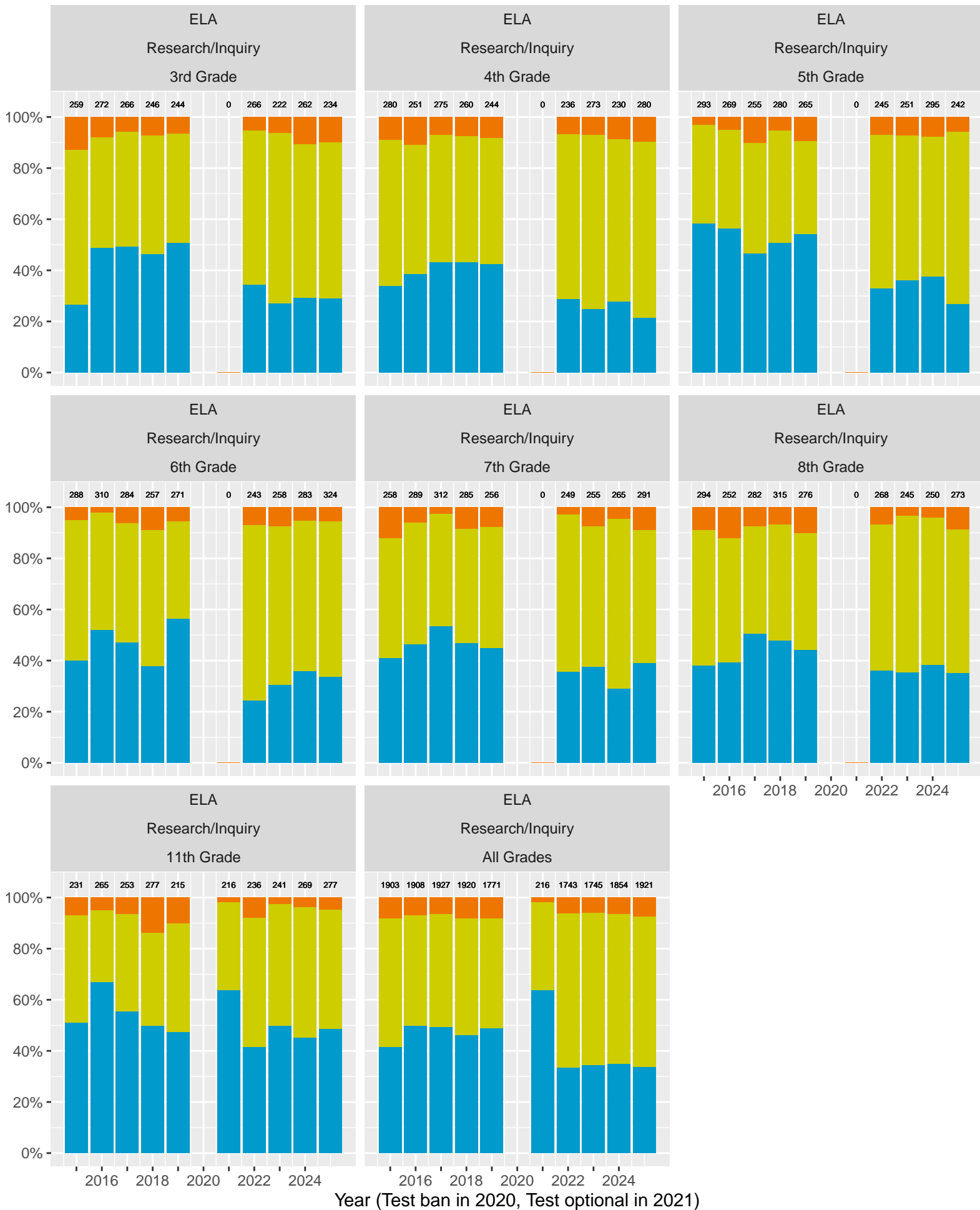
Key: ■ Above Standard ■ Near Standard ■ Below Standard

Albany Unified School District (Subject Area 3)



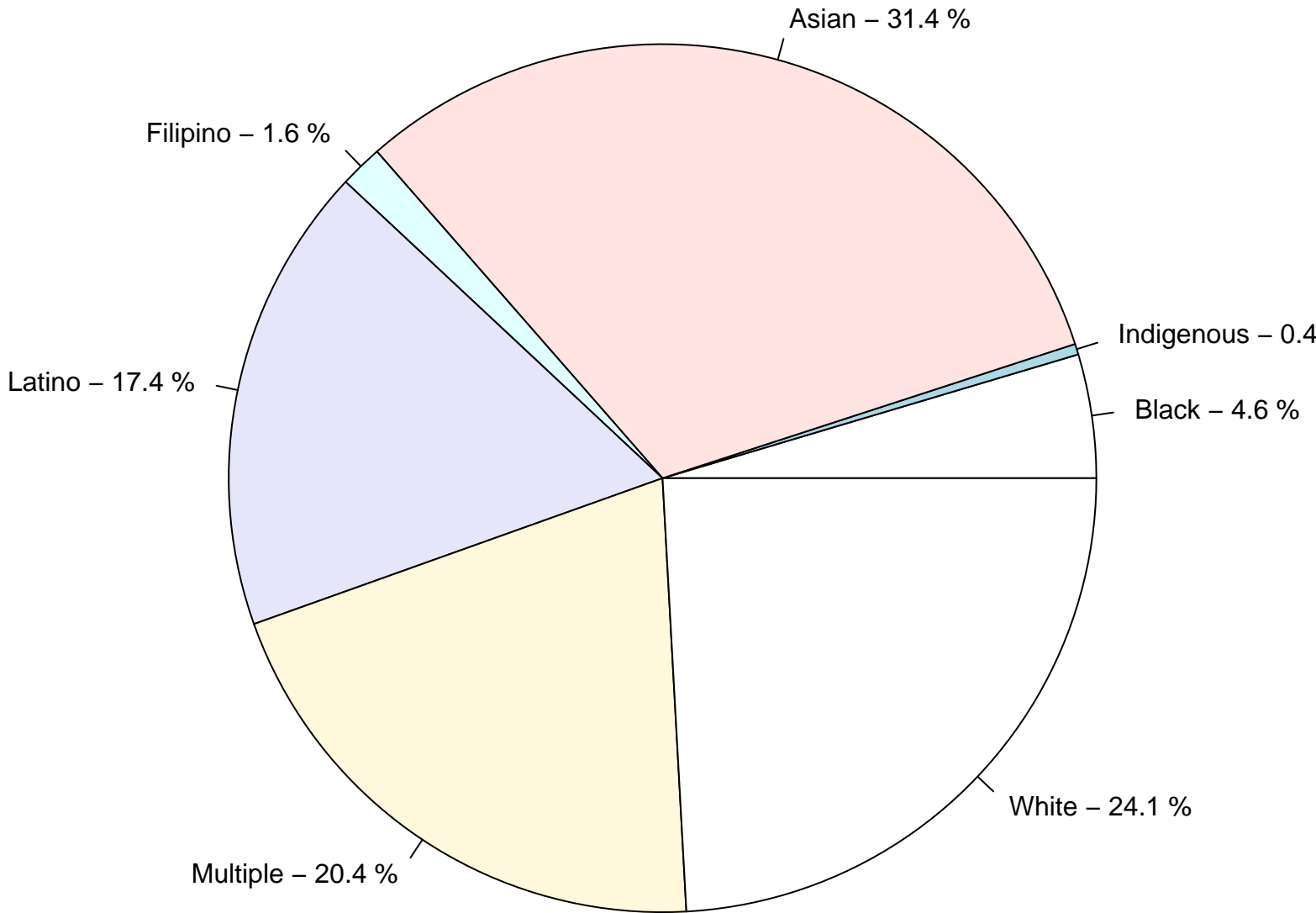
Key: ■ Above Standard ■ Near Standard ■ Below Standard

Albany Unified School District (Subject Area 4)

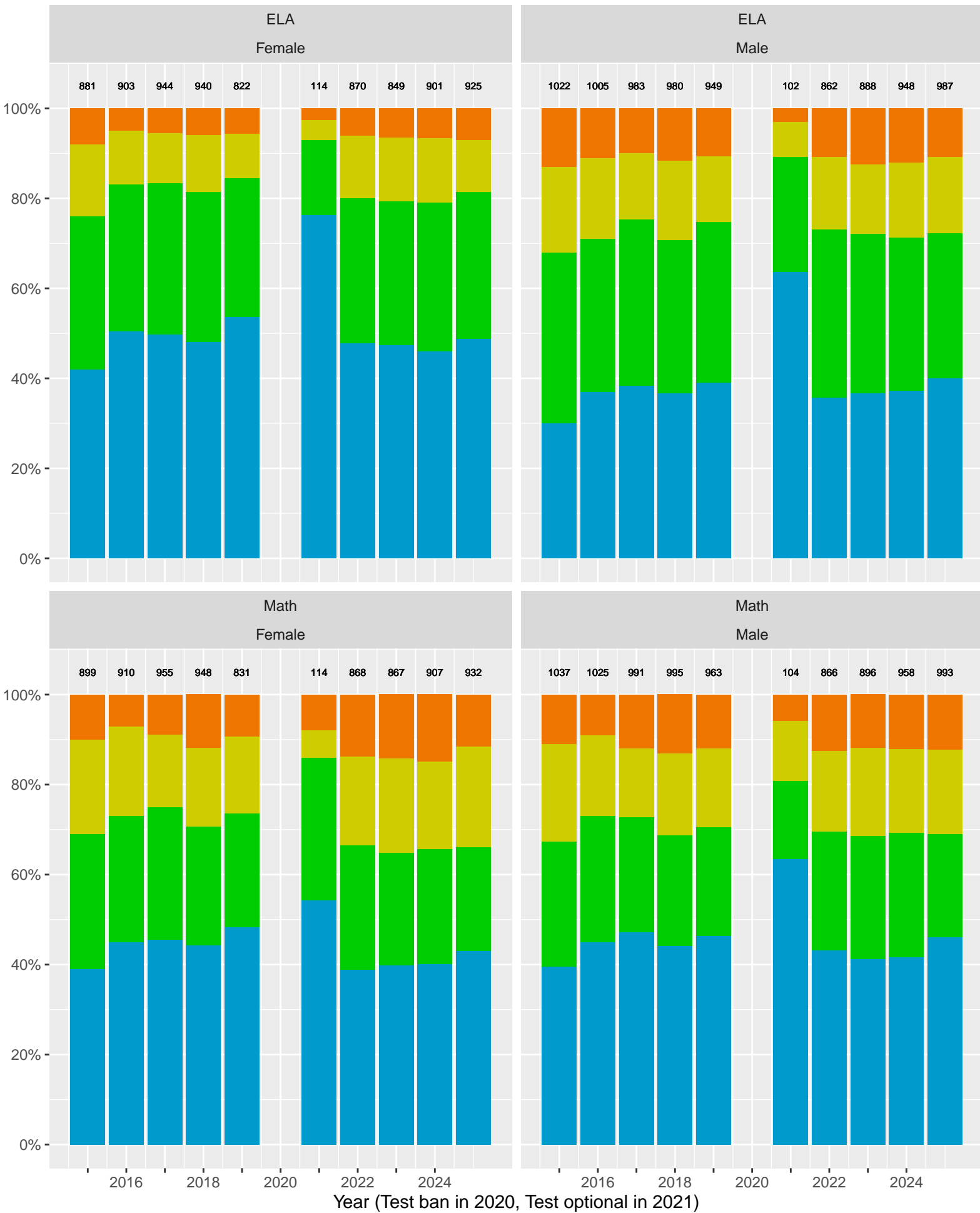


Key: ■ Above Standard ■ Near Standard ■ Below Standard

Racial distribution of Albany Unified School District students tested in 2024

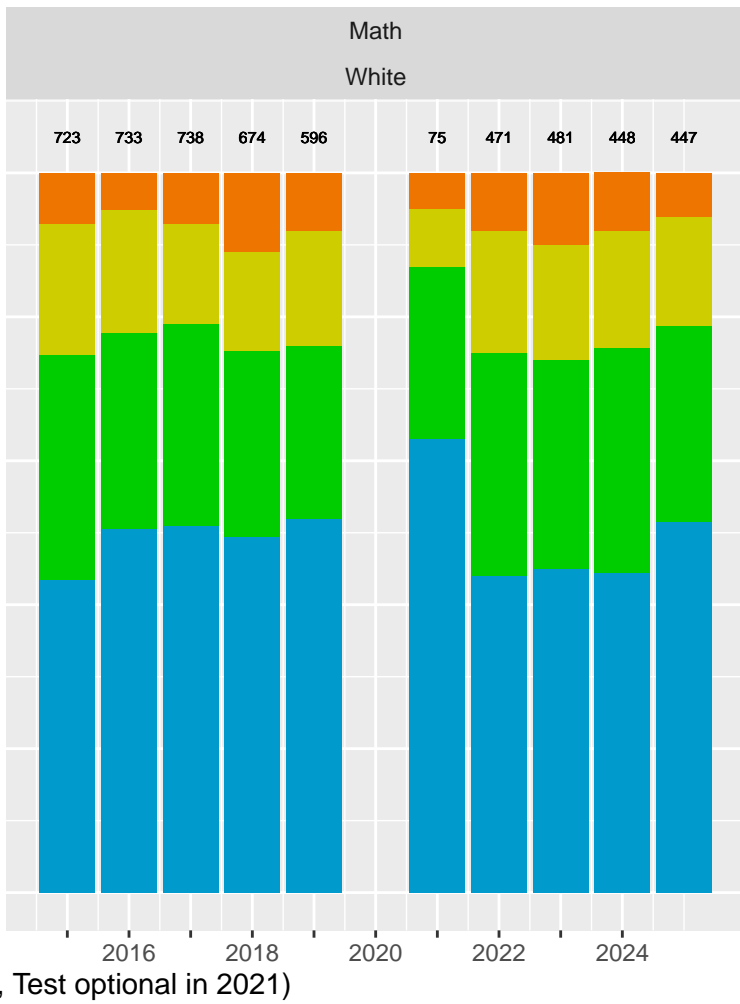
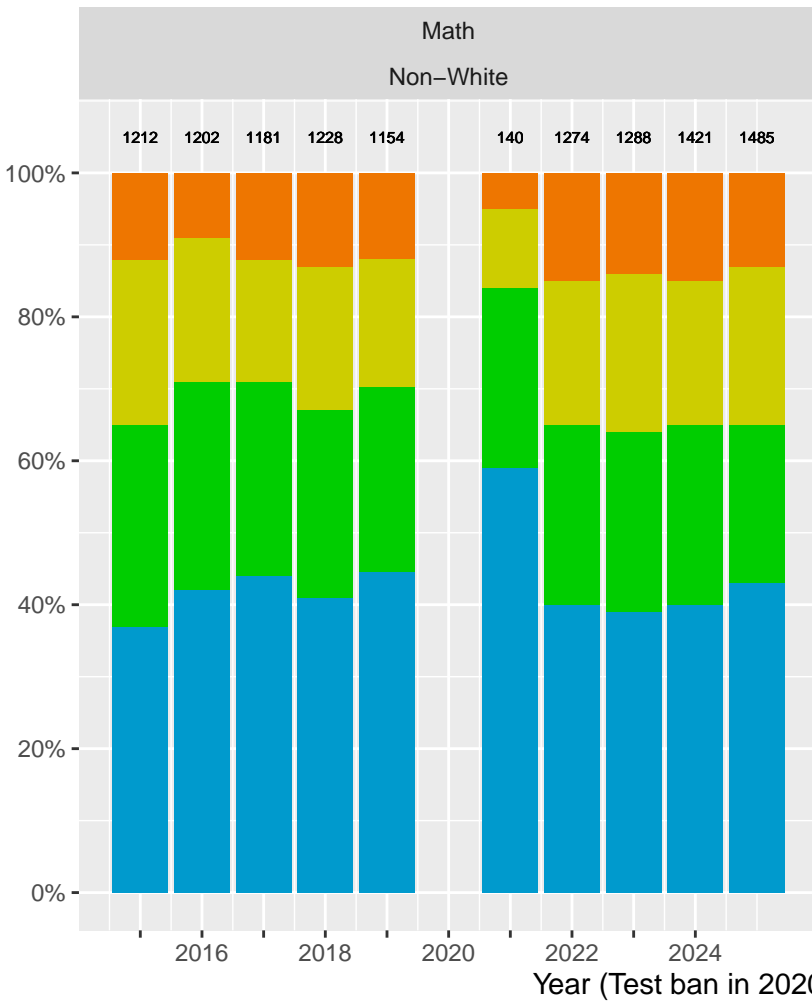
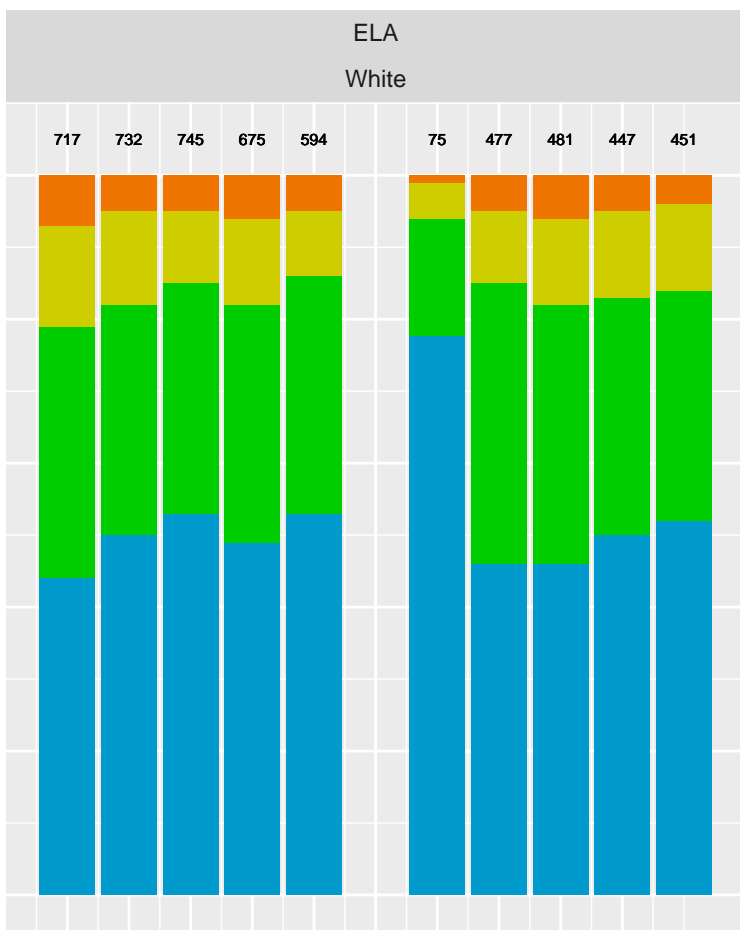
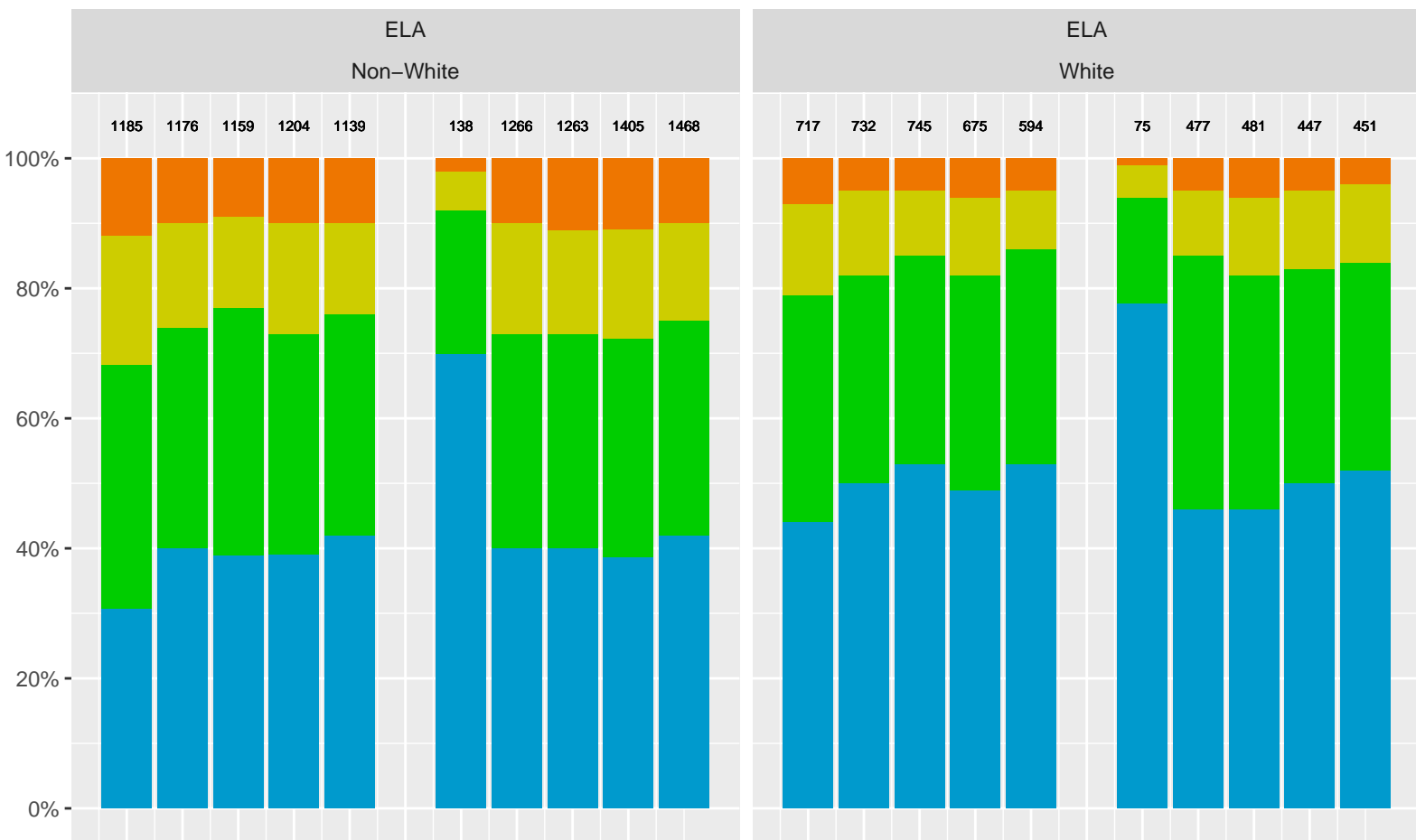


Albany Unified School District by Sex



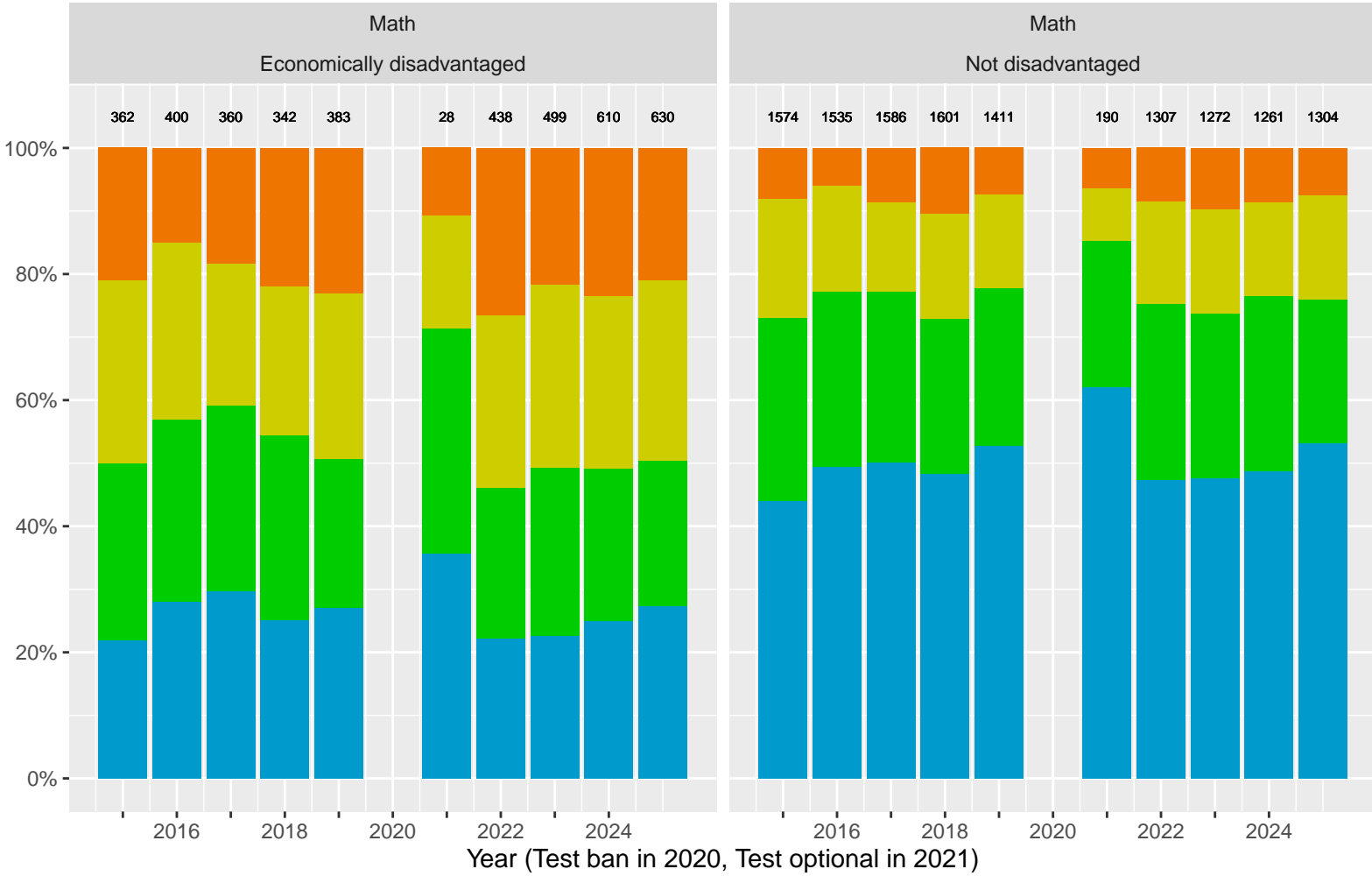
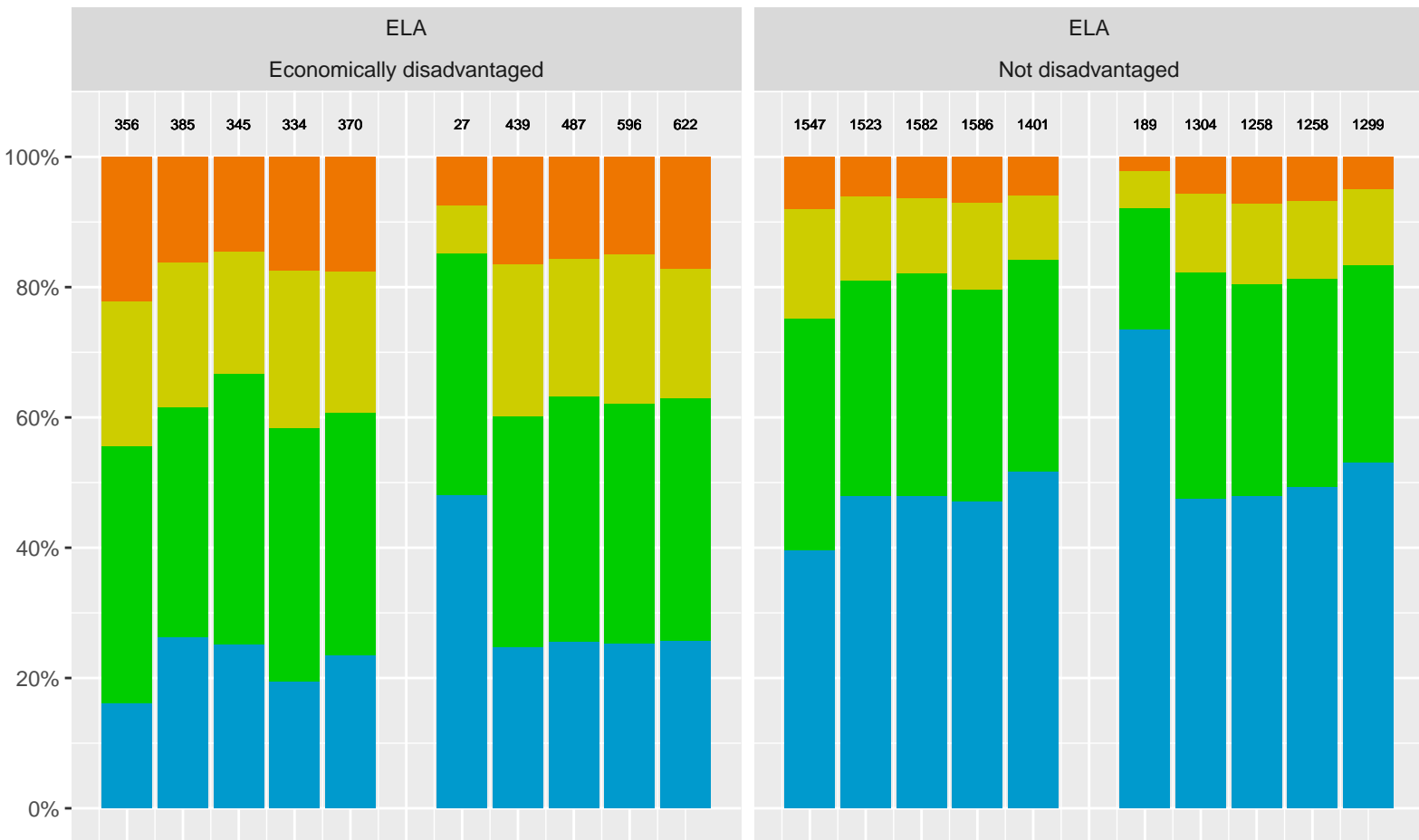
Key: Standard Exceeded Standard Met Standard Nearly Met Standard Not Met

Albany Unified School District by Non-White + White



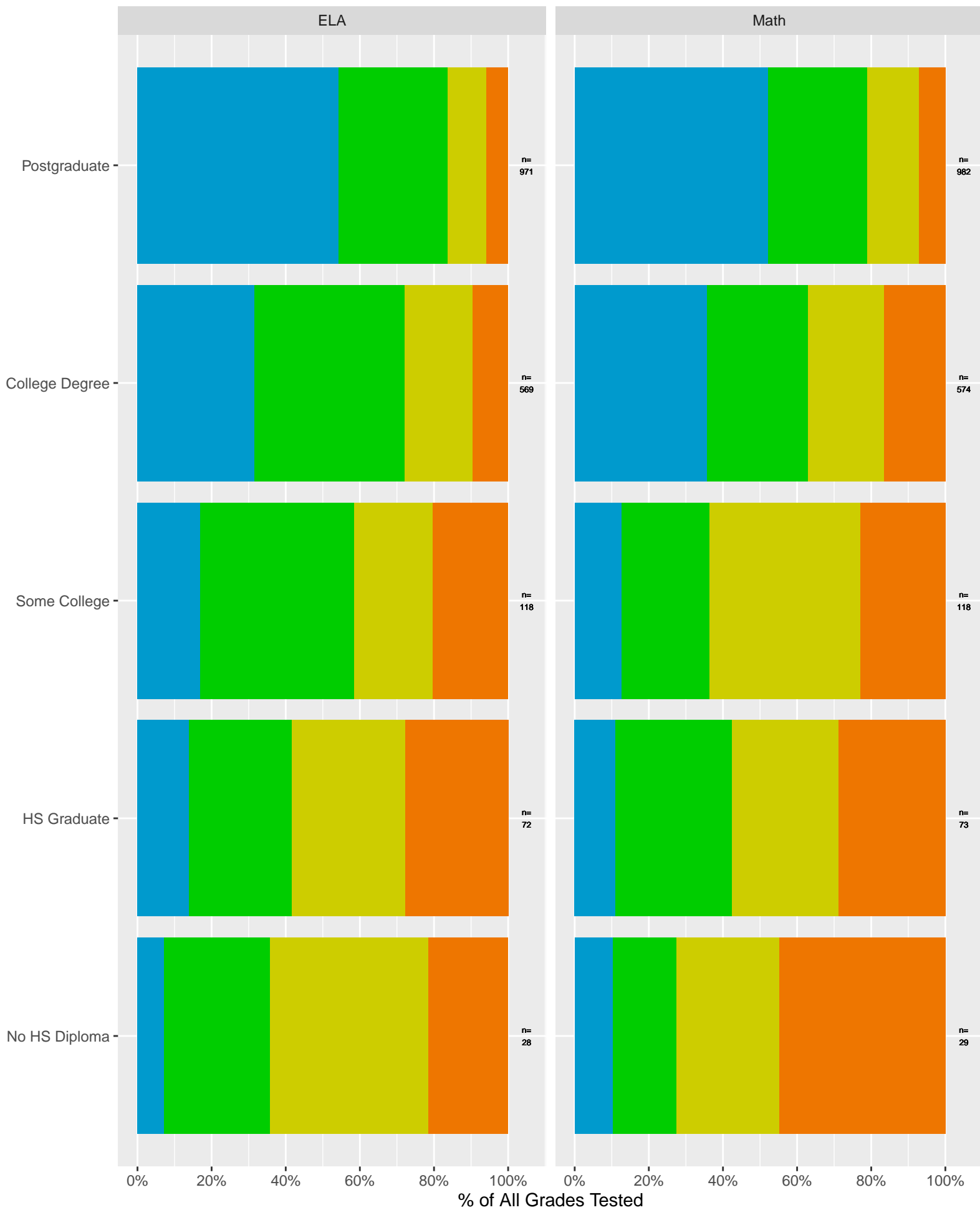
Key: ■ Standard Exceeded ■ Standard Met ■ Standard Nearly Met ■ Standard Not Met

Albany Unified School District by Economic Disadvantage



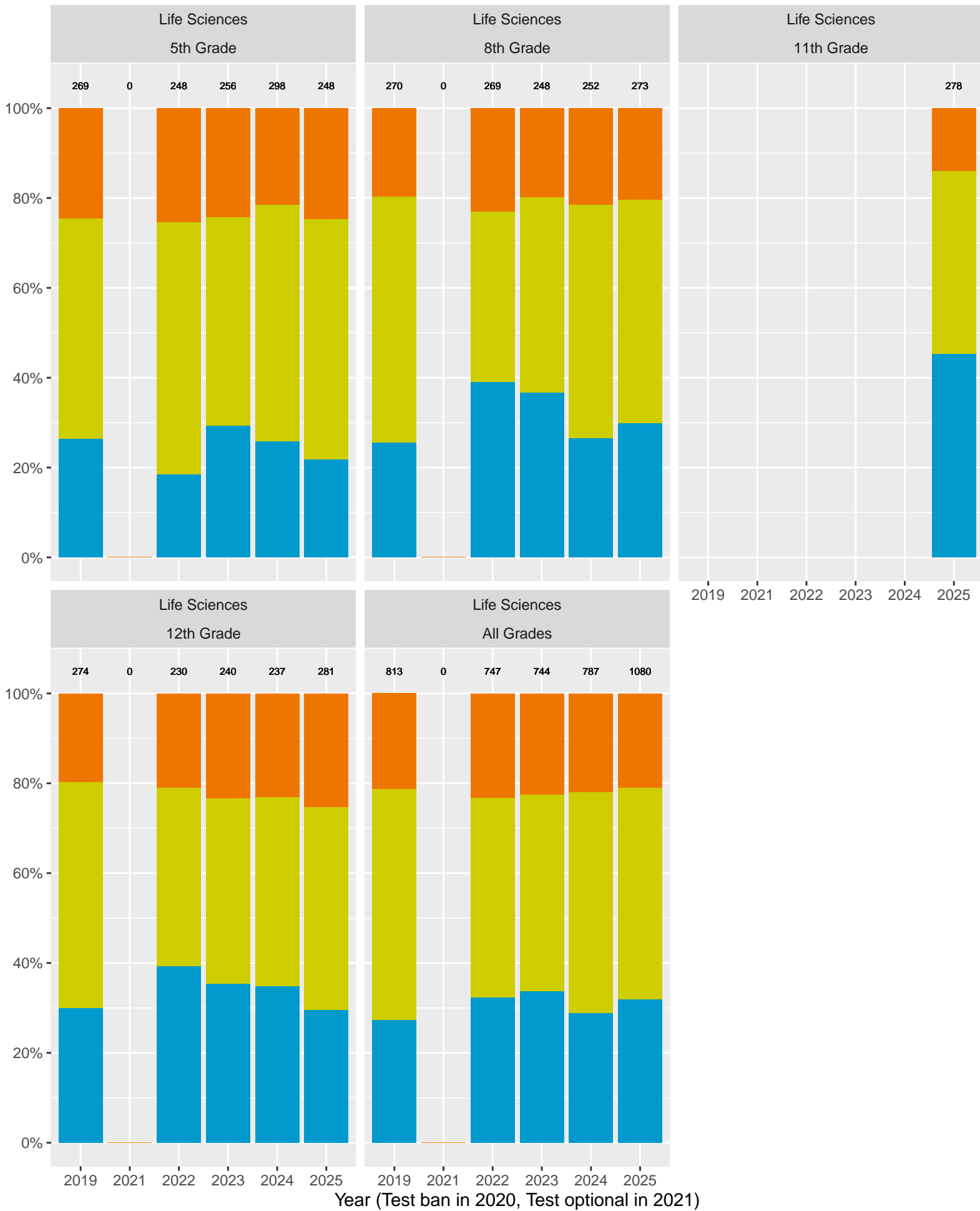
Key: ■ Standard Exceeded ■ Standard Met ■ Standard Nearly Met ■ Standard Not Met

Albany Unified School District (2024) by Parent's Education Level



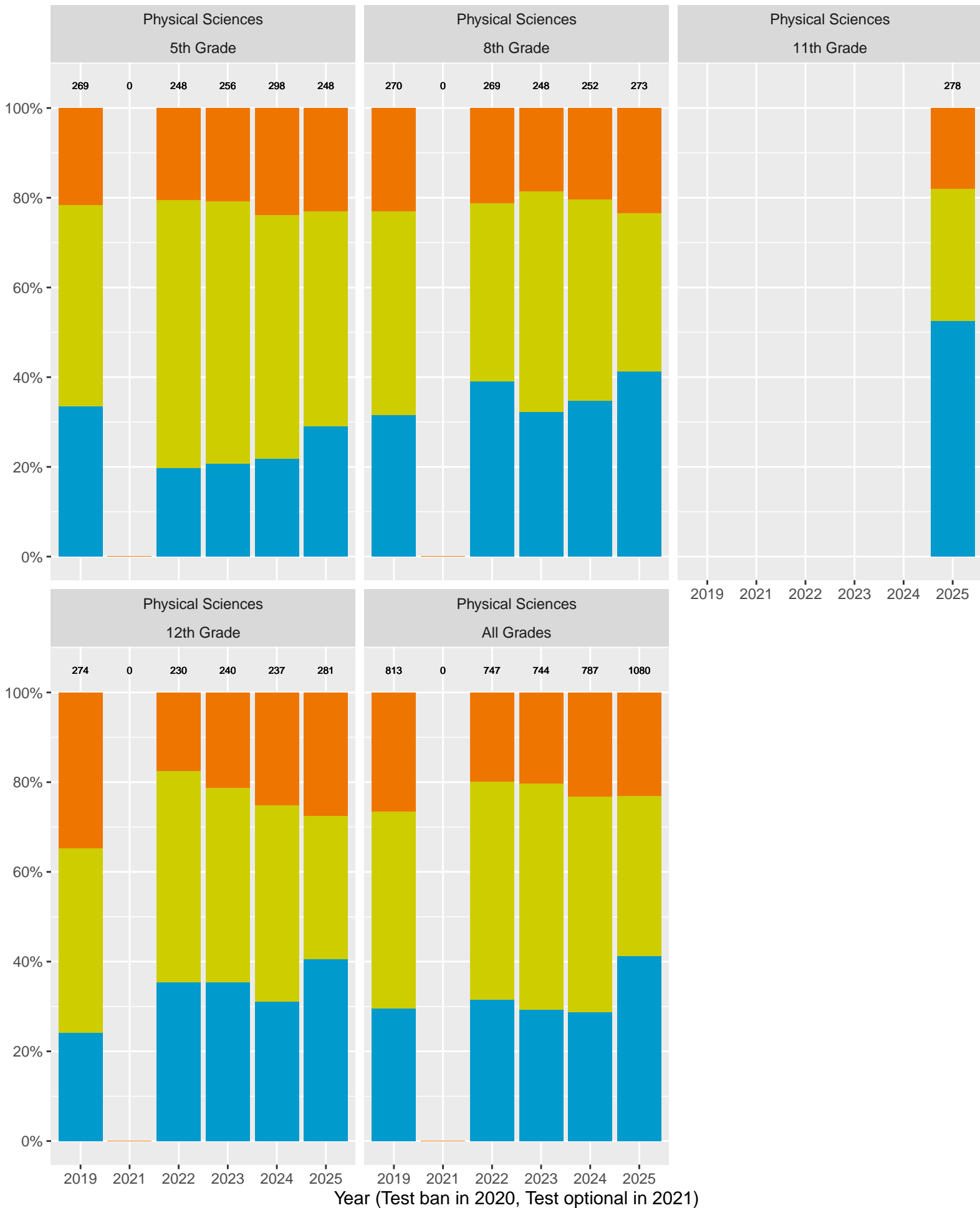
Key: ■ Standard Exceeded ■ Standard Met ■ Standard Nearly Met ■ Standard Not Met

CA Science Test (CAST): Albany Unified School District (Life Sciences)



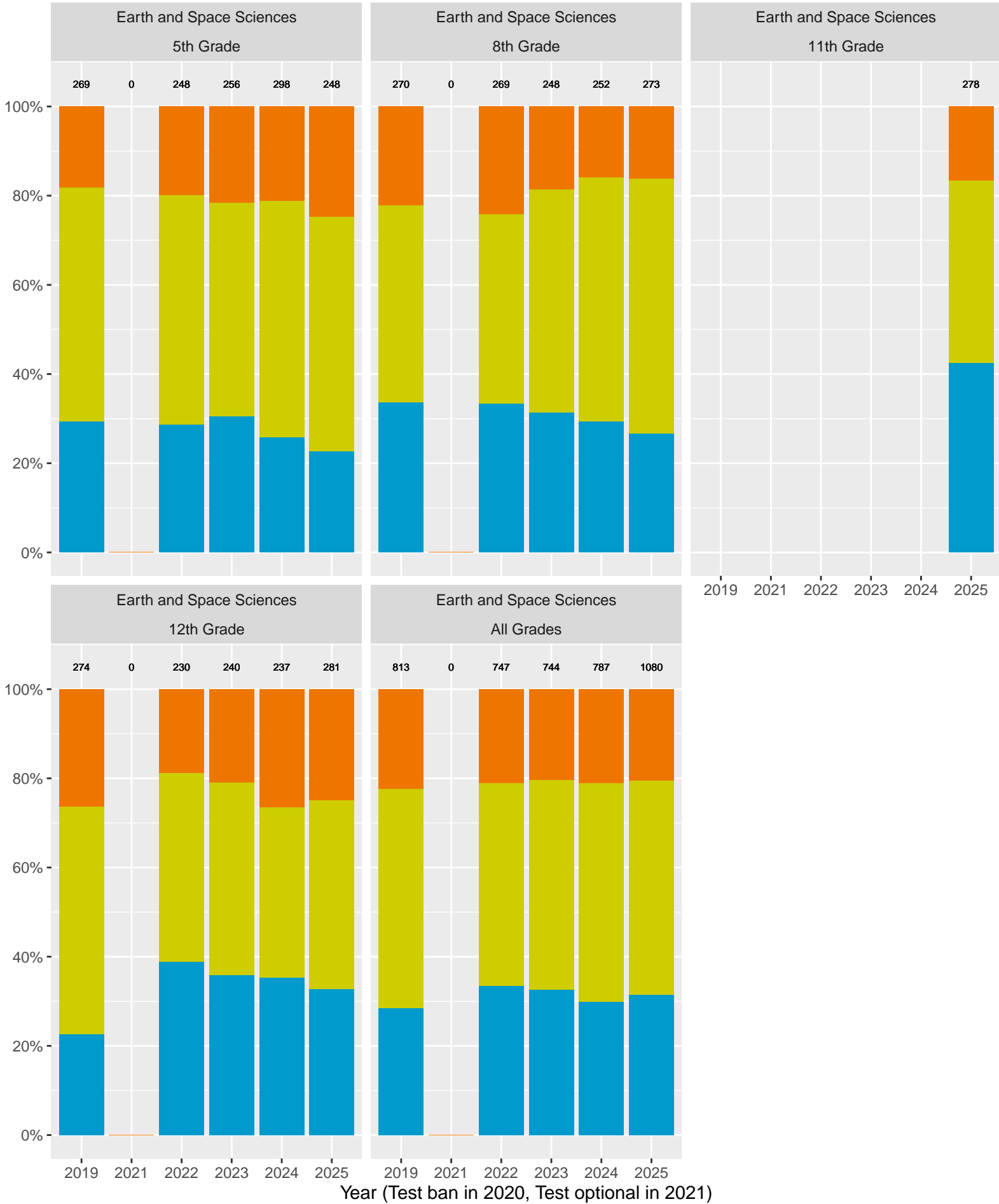
Key: ■ Above Standard ■ Near Standard ■ Below Standard

CA Science Test (CAST): Albany Unified School District (Physical Sciences)



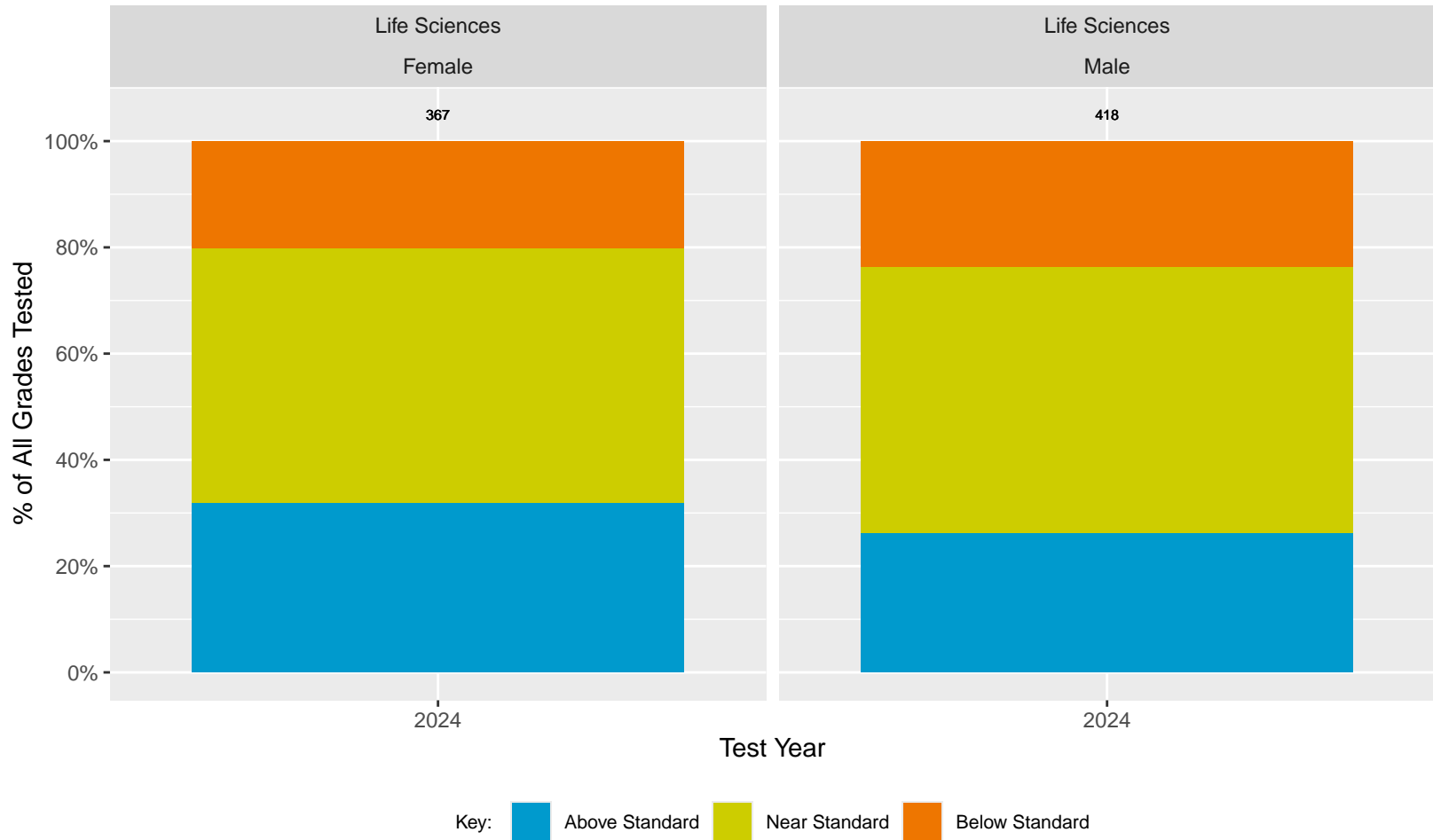
Key: ■ Above Standard ■ Near Standard ■ Below Standard

CA Science Test (CAST): Albany Unified School District (Earth and Space Sciences)

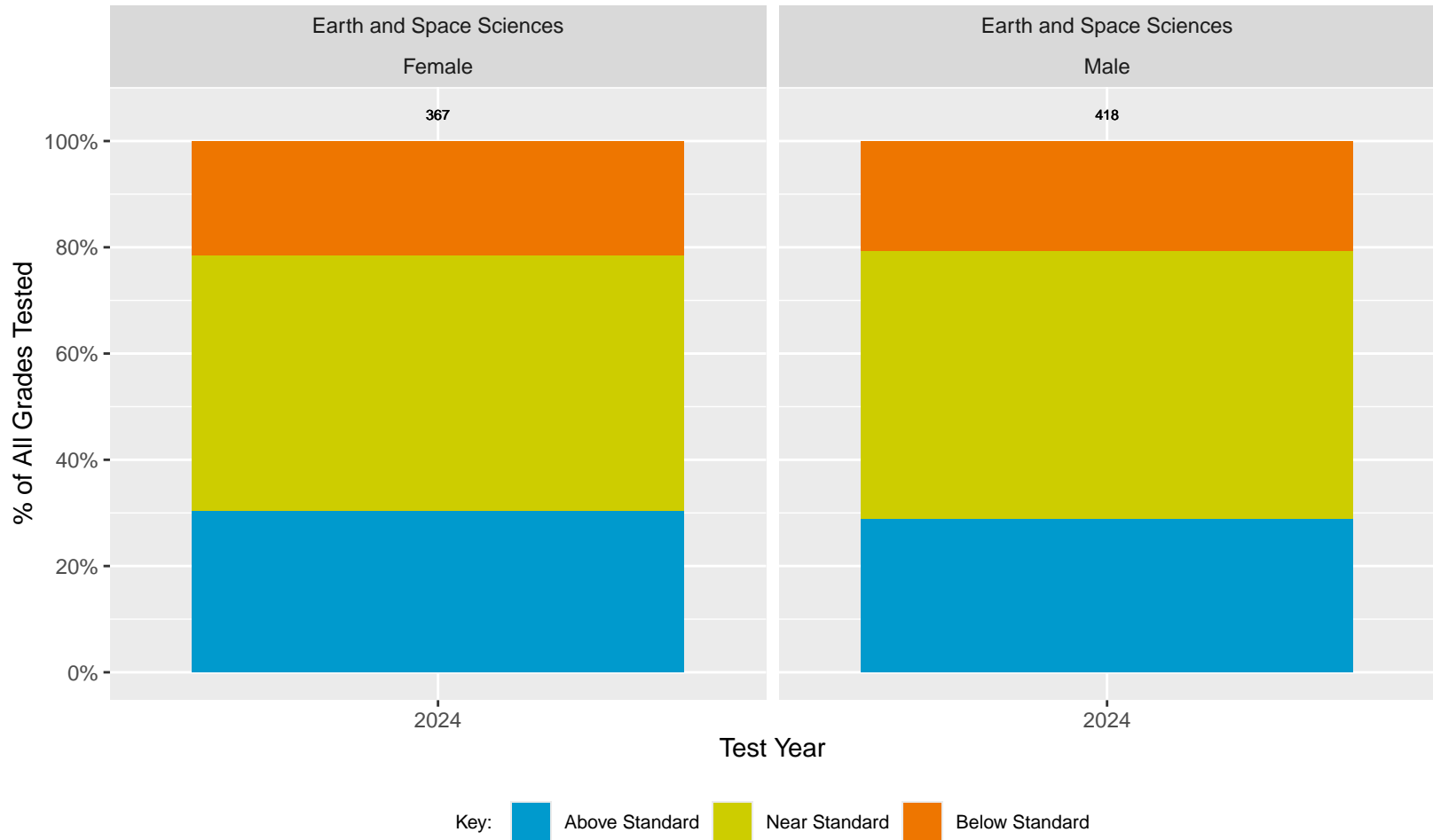


Key: ■ Above Standard ■ Near Standard ■ Below Standard

CA Science Test (CAST): Albany Unified School District (Sex)



CA Science Test (CAST): Albany Unified School District (Sex)



CA Science Test (CAST): Albany Unified School District by Non-White + White

Physical Sciences

Non-White

Physical Sciences

White

518

491

539

572

782

273

252

205

214

294

100%

80%

60%

40%

20%

0%

% of All Grades Tested

2019

2022

2023

2024

2025

2019

2022

2023

2024

2025

Year (Test ban in 2020, Test optional in 2021)

Key:



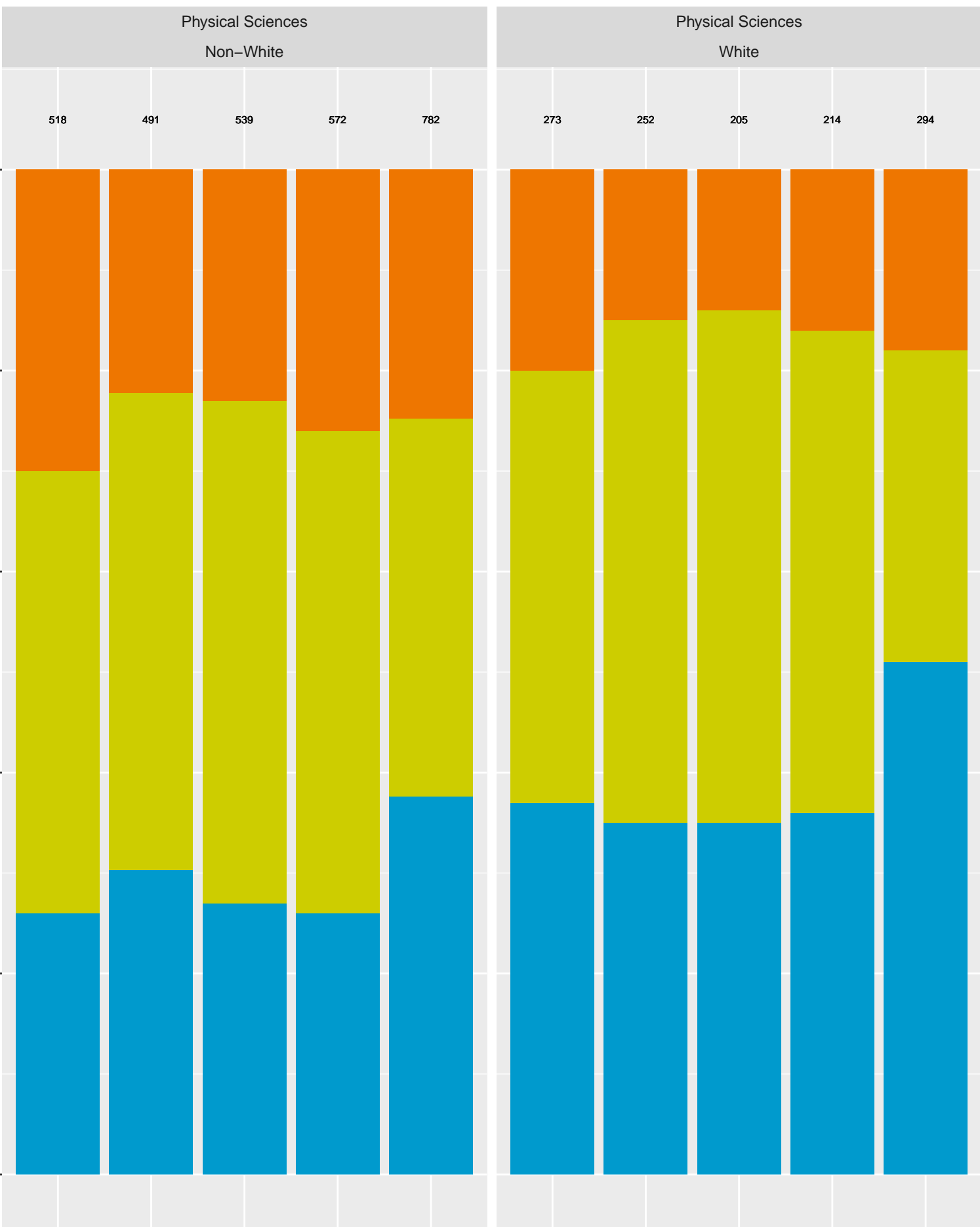
Above Standard



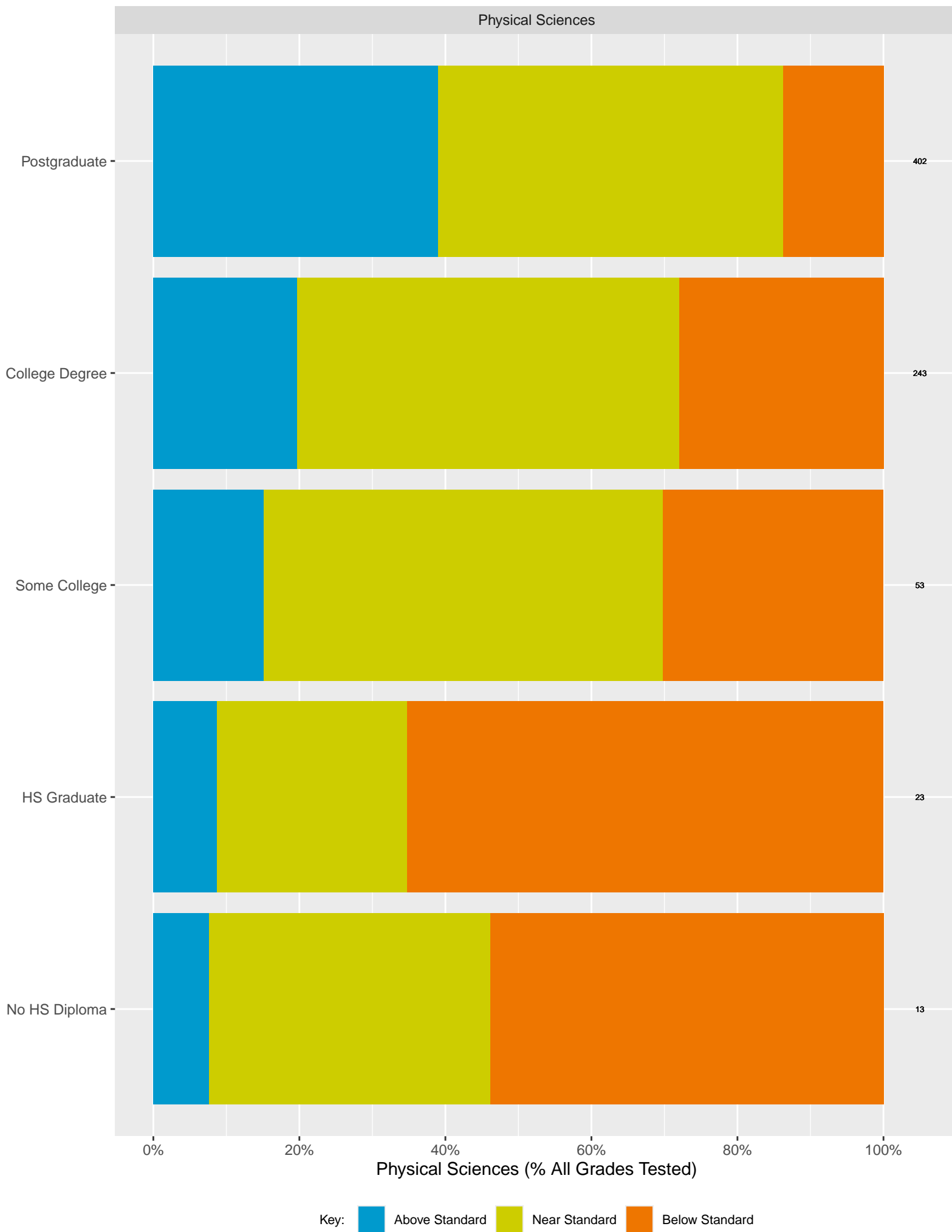
Near Standard



Below Standard



Albany Unified School District CAST (2024) by Parent's Education Level



Parents for Educational Excellence in Piedmont

Analysis by: Hari Titan, Ph.D.

Email: ExcellencePUSD@gmail.com

CAASPP source data & validation: bit.ly/CAASPPComparison

Copyright 2024 Parents for Educational Excellence in Piedmont

Licensed under Creative Commons Attribution–NonCommercial–ShareAlike 4.0 International